

GRID SYSTEM OPERATION SUMMARY (PENINSULAR MALAYSIA)

	FORECAST	ACTUAL	VARIANCE	
Maximum Demand for 1 Disember 2013	12,878 MW	12,608 MW	-2.10%	
Energy Demand for 1 Disember 2013	276.88 GWh	269.03 GWh	-2.84%	
Highest Maximum Demand (13 May 2013)	16,298 MW	16,562 MW	1.62%	*New MD
Highest Daily Energy Demand (25 June 2013)	345.88 GWh	345.25 GWh	-0.18%	*New Energy

Prepared by:

Electricity Market Operations

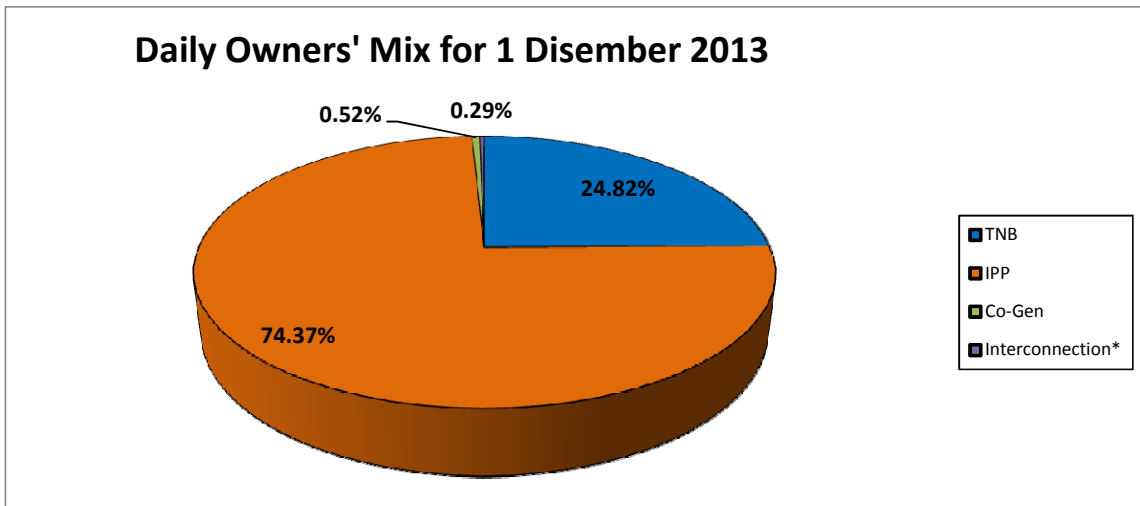
Electricity Supply & Market Regulations Dept.

Energy Commission Malaysia

02-Dec-13

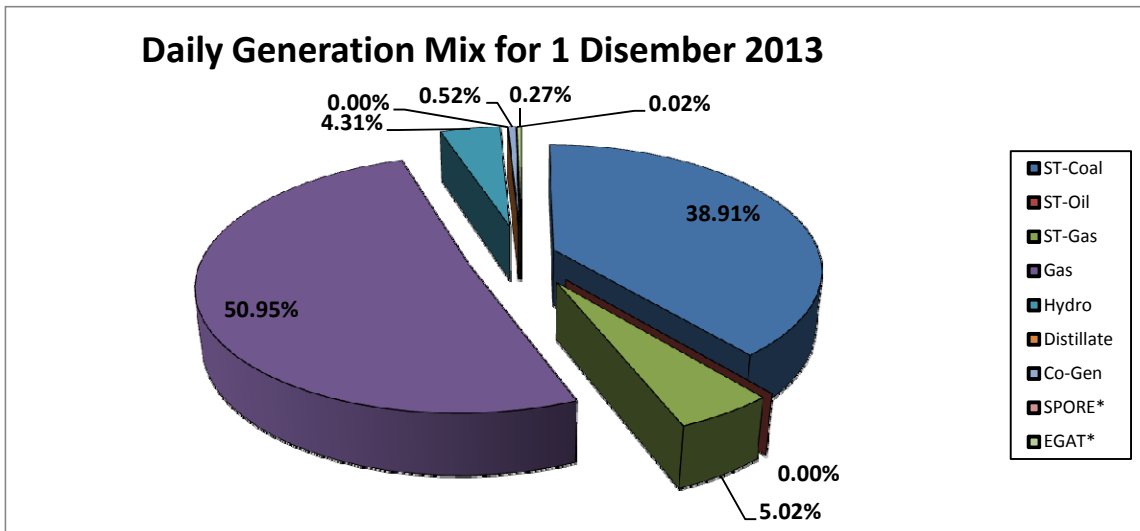
Daily Owners' Mix for 1 Desember 2013

TNB	67,168	MWh
IPP	201,222	MWh
Co-Gen	1,411	MWh
Interconnection*	774	MWh



Daily Generation Mix for 1 Desember 2013

ST-Coal	105,293	MWh
ST-Oil	-	MWh
ST-Gas	13,574	MWh
Gas	137,866	MWh
Hydro	11,657	MWh
Distillate	-	MWh
Co-Gen	1,411	MWh
SPORE*	53	MWh
EGAT*	721	MWh



*Negative = energy is imported from Singapore and Thailand
 Positive = energy is exported to Singapore and Thailand