

GRID SYSTEM OPERATION SUMMARY (PENINSULAR MALAYSIA)

	FORECAST	ACTUAL	VARIANCE	
Maximum Demand for 27 November 2013	15,758 MW	15,812 MW	0.34%	
Energy Demand for 27 November 2013	330.26 GWh	330.54 GWh	0.08%	
Highest Maximum Demand (13 May 2013)	16,298 MW	16,562 MW	1.62%	*New MD
Highest Daily Energy Demand (25 June 2013)	345.88 GWh	345.25 GWh	-0.18%	*New Energy

Prepared by:

Electricity Market Operations

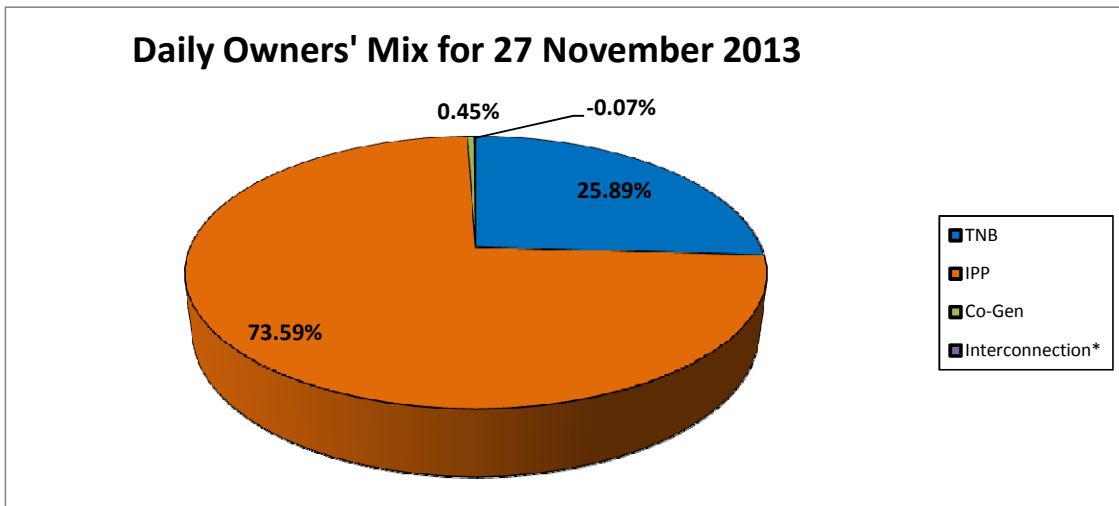
Electricity Supply & Market Regulations Dept.

Energy Commission Malaysia

28-Nov-13

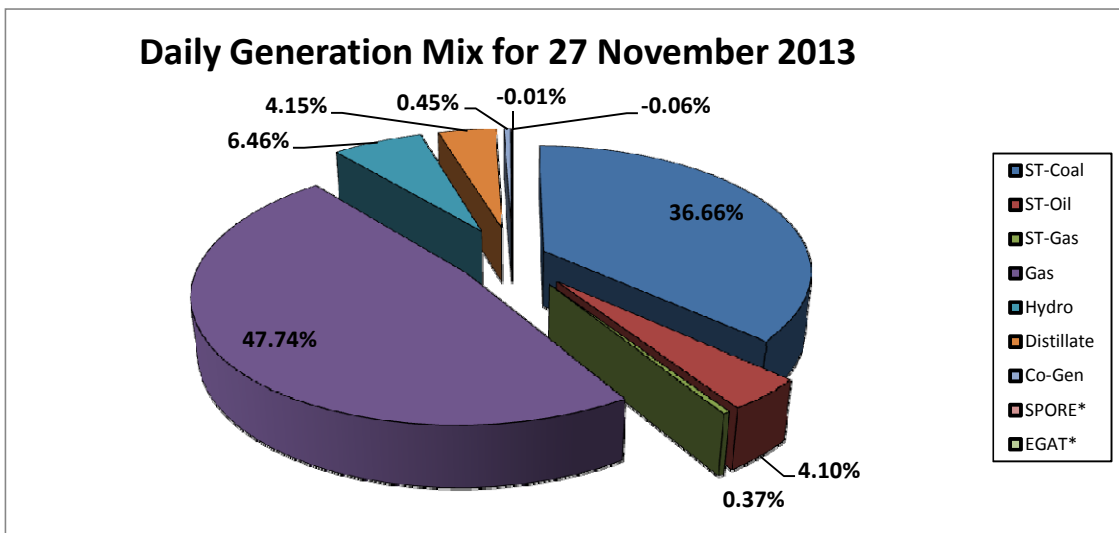
Daily Owners' Mix for 27 November 2013

TNB	85,561 MWh
IPP	243,253 MWh
Co-Gen	1,489 MWh
Interconnection*	(234) MWh



Daily Generation Mix for 27 November 2013

ST-Coal	121,168 MWh
ST-Oil	13,561 MWh
ST-Gas	1,210 MWh
Gas	157,811 MWh
Hydro	21,347 MWh
Distillate	13,717 MWh
Co-Gen	1,489 MWh
SPORE*	(202) MWh
EGAT*	(32) MWh



*Negative = energy is imported from Singapore and Thailand
 Positive = energy is exported to Singapore and Thailand