

**GRID SYSTEM OPERATION SUMMARY (PENINSULAR MALAYSIA)**

	<b>FORECAST</b>	<b>ACTUAL</b>	<b>VARIANCE</b>	
<b>Maximum Demand for 26 November 2013</b>	15,501 MW	15,787 MW	1.85%	
<b>Energy Demand for 26 November 2013</b>	325.96 GWh	328.03 GWh	0.64%	
<b>Highest Maximum Demand (13 May 2013)</b>	16,298 MW	16,562 MW	1.62%	<b>*New MD</b>
<b>Highest Daily Energy Demand (25 June 2013)</b>	345.88 GWh	345.25 GWh	-0.18%	<b>*New Energy</b>

Prepared by:

Electricity Market Operations

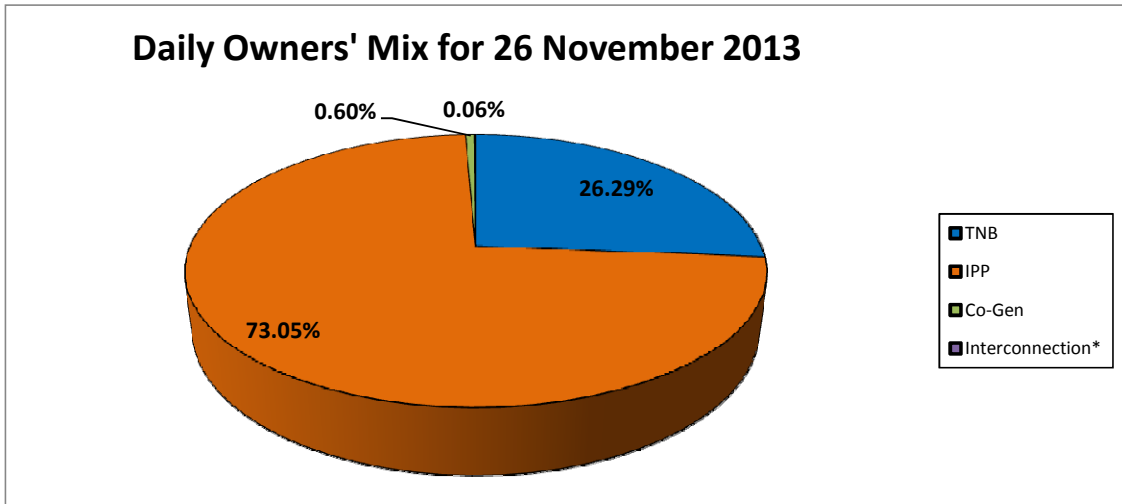
Electricity Supply & Market Regulations Dept.

Energy Commission Malaysia

27-Nov-13

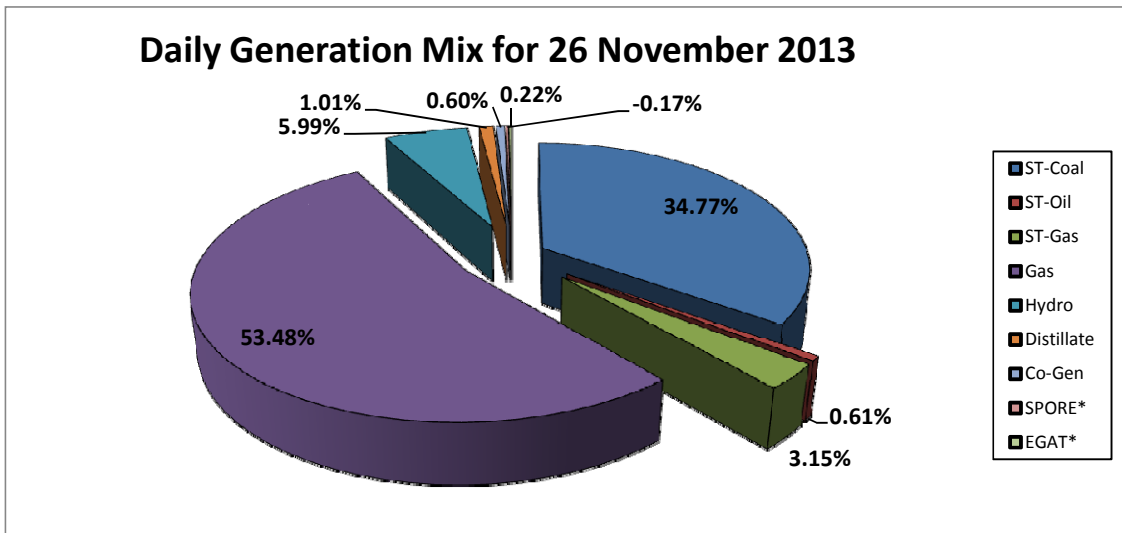
**Daily Owners' Mix for 26 November 2013**

TNB	86,163	MWh
IPP	239,411	MWh
Co-Gen	1,962	MWh
Interconnection*	189	MWh



**Daily Generation Mix for 26 November 2013**

ST-Coal	114,322	MWh
ST-Oil	2,011	MWh
ST-Gas	10,361	MWh
Gas	175,842	MWh
Hydro	19,704	MWh
Distillate	3,334	MWh
Co-Gen	1,962	MWh
SPORE*	(543)	MWh
EGAT*	732	MWh



\*Negative = energy is imported from Singapore and Thailand

Positive = energy is exported to Singapore and Thailand