

GRID SYSTEM OPERATION SUMMARY (PENINSULAR MALAYSIA)

	FORECAST	ACTUAL	VARIANCE
Maximum Demand for 18 November 2013	15,503 MW	15,610 MW	0.69%
Energy Demand for 18 November 2013	318.43 GWh	316.68 GWh	-0.55%
Highest Maximum Demand (13 May 2013)	16,298 MW	16,562 MW	1.62%
Highest Daily Energy Demand (25 June 2013)	345.88 GWh	345.25 GWh	-0.18%

*New MD
*New Energy

Prepared by:

Electricity Market Operations

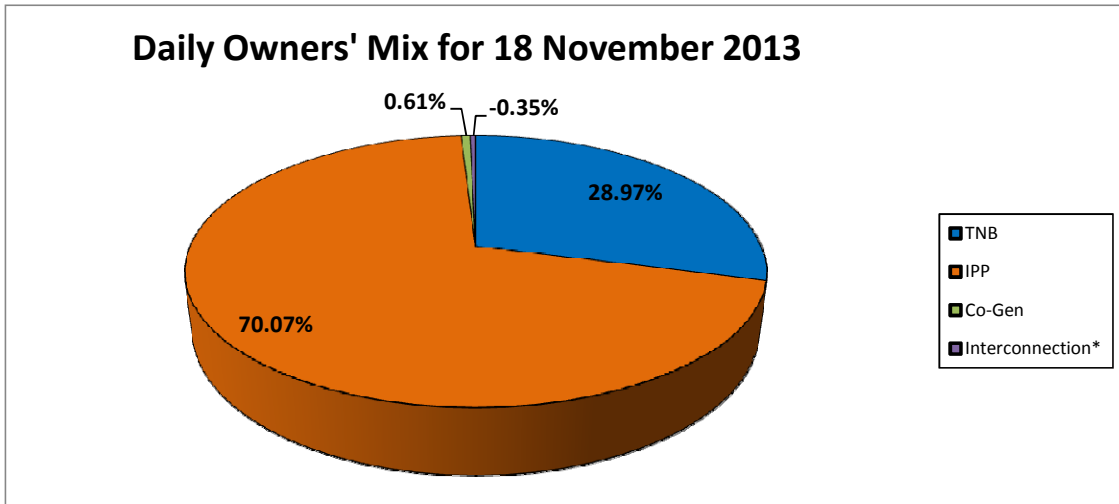
Electricity Supply & Market Regulations Dept.

Energy Commission Malaysia

19-Nov-13

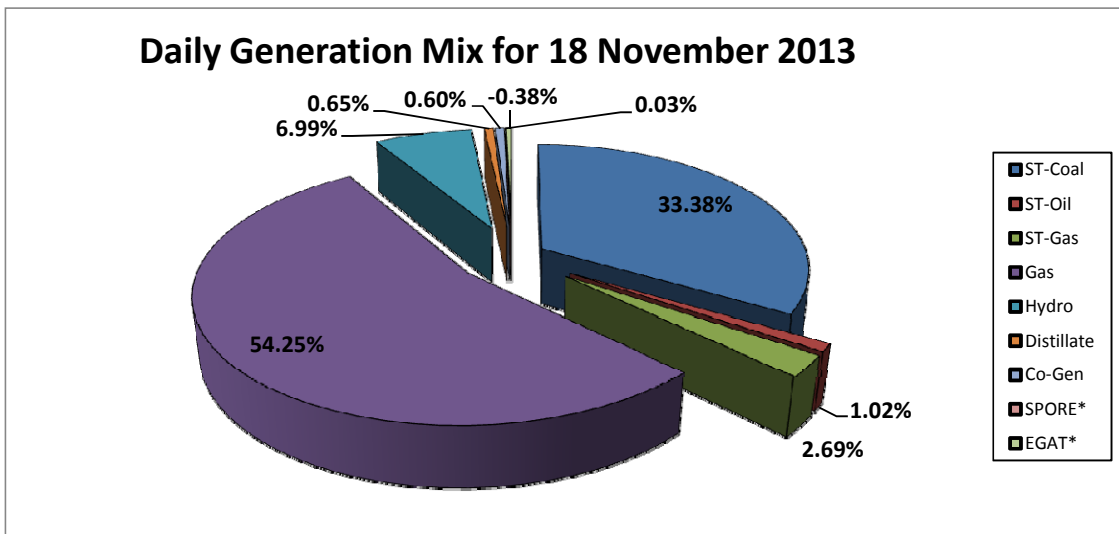
Daily Owners' Mix for 18 November 2013

TNB	91,757 MWh
IPP	221,913 MWh
Co-Gen	1,916 MWh
Interconnection*	(1,097) MWh



Daily Generation Mix for 18 November 2013

ST-Coal	105,792 MWh
ST-Oil	3,236 MWh
ST-Gas	8,518 MWh
Gas	171,928 MWh
Hydro	22,142 MWh
Distillate	2,054 MWh
Co-Gen	1,916 MWh
SPORE*	104 MWh
EGAT*	(1,201) MWh



*Negative = energy is imported from Singapore and Thailand
 Positive = energy is exported to Singapore and Thailand