

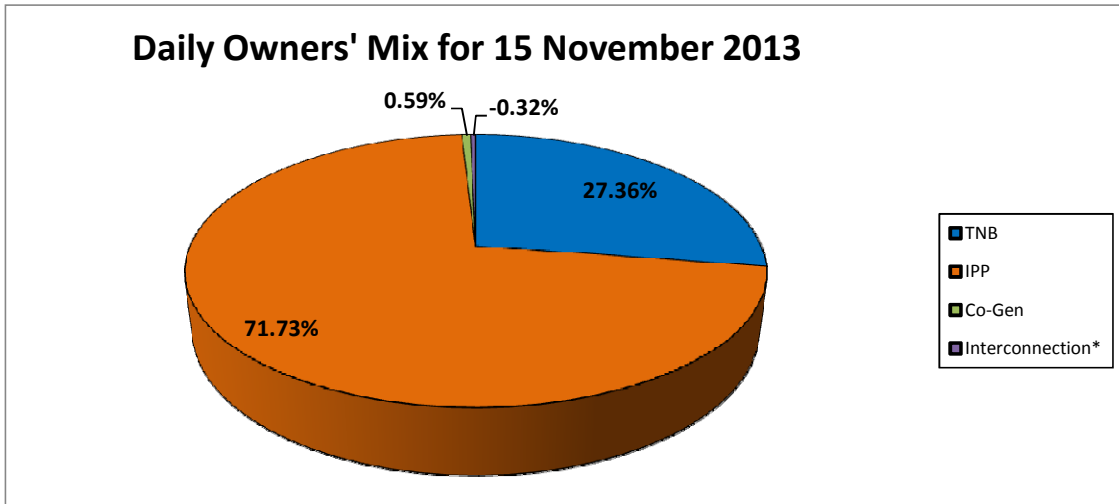
GRID SYSTEM OPERATION SUMMARY (PENINSULAR MALAYSIA)

	FORECAST	ACTUAL	VARIANCE	
Maximum Demand for 15 November 2013	15,351 MW	15,315 MW	-0.23%	
Energy Demand for 15 November 2013	321.43 GWh	319.20 GWh	-0.69%	
Highest Maximum Demand (13 May 2013)	16,298 MW	16,562 MW	1.62%	*New MD
Highest Daily Energy Demand (25 June 2013)	345.88 GWh	345.25 GWh	-0.18%	*New Energy

Prepared by:
Electricity Market Operations
Electricity Supply & Market Regulations Dept.
Energy Commission Malaysia
16-Nov-13

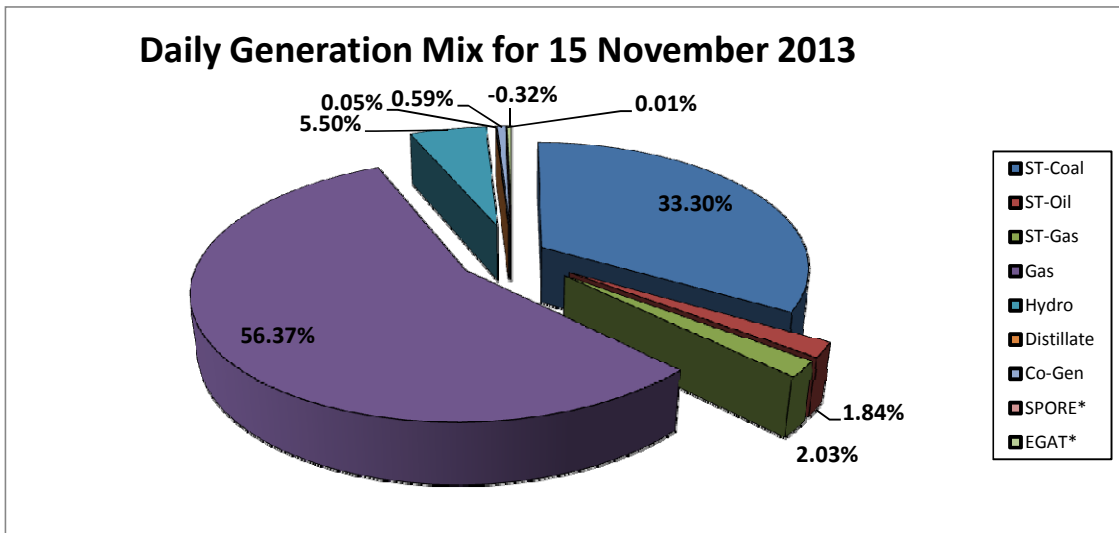
Daily Owners' Mix for 15 November 2013

TNB	87,342 MWh
IPP	228,984 MWh
Co-Gen	1,876 MWh
Interconnection*	(1,013) MWh



Daily Generation Mix for 15 November 2013

ST-Coal	106,301 MWh
ST-Oil	5,867 MWh
ST-Gas	6,486 MWh
Gas	179,966 MWh
Hydro	17,556 MWh
Distillate	150 MWh
Co-Gen	1,876 MWh
SPORE*	19 MWh
EGAT*	(1,032) MWh



*Negative = energy is imported from Singapore and Thailand

Positive = energy is exported to Singapore and Thailand