

GRID SYSTEM OPERATION SUMMARY (PENINSULAR MALAYSIA)

	FORECAST	ACTUAL	VARIANCE	
Maximum Demand for 14 November 2013	15,649 MW	15,882 MW	1.49%	
Energy Demand for 14 November 2013	326.61 GWh	327.33 GWh	0.22%	
Highest Maximum Demand (13 May 2013)	16,298 MW	16,562 MW	1.62%	*New MD
Highest Daily Energy Demand (25 June 2013)	345.88 GWh	345.25 GWh	-0.18%	*New Energy

Prepared by:

Electricity Market Operations

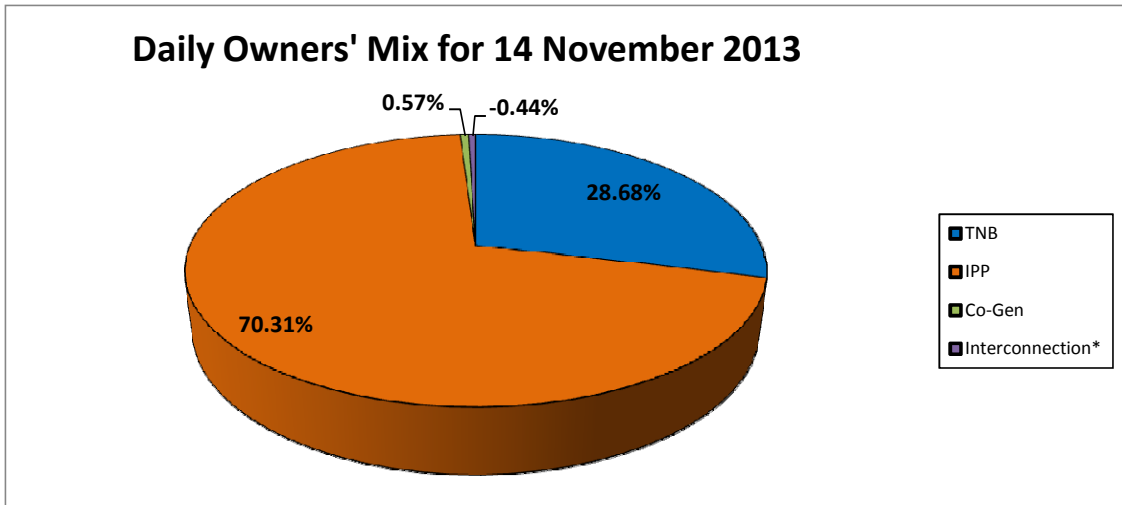
Electricity Supply & Market Regulations Dept.

Energy Commission Malaysia

15-Nov-13

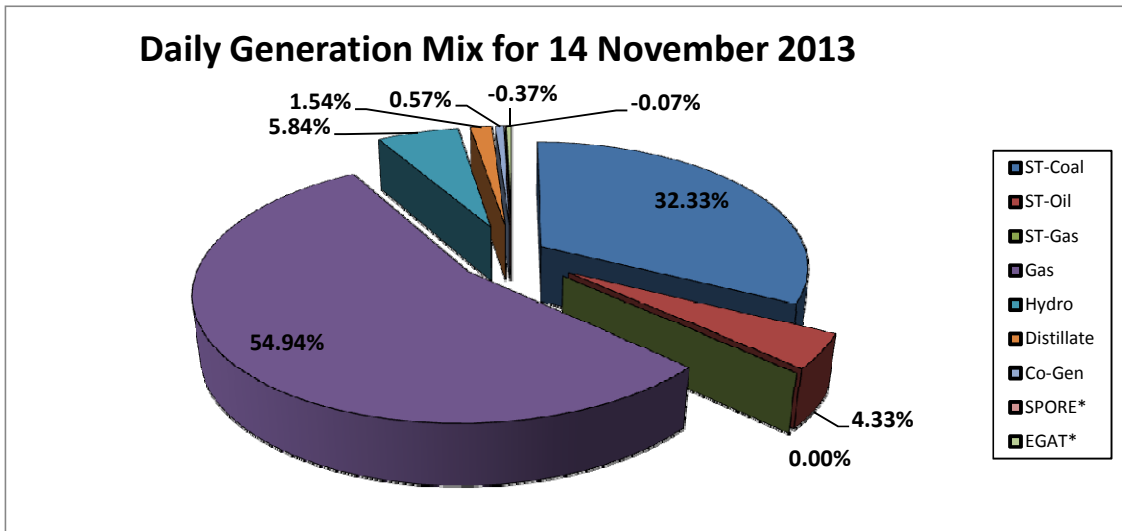
Daily Owners' Mix for 14 November 2013

TNB	93,892 MWh
IPP	230,135 MWh
Co-Gen	1,875 MWh
Interconnection*	(1,432) MWh



Daily Generation Mix for 14 November 2013

ST-Coal	105,834 MWh
ST-Oil	14,175 MWh
ST-Gas	- MWh
Gas	179,836 MWh
Hydro	19,128 MWh
Distillate	5,054 MWh
Co-Gen	1,875 MWh
SPORE*	(234) MWh
EGAT*	(1,198) MWh



*Negative = energy is imported from Singapore and Thailand
 Positive = energy is exported to Singapore and Thailand