

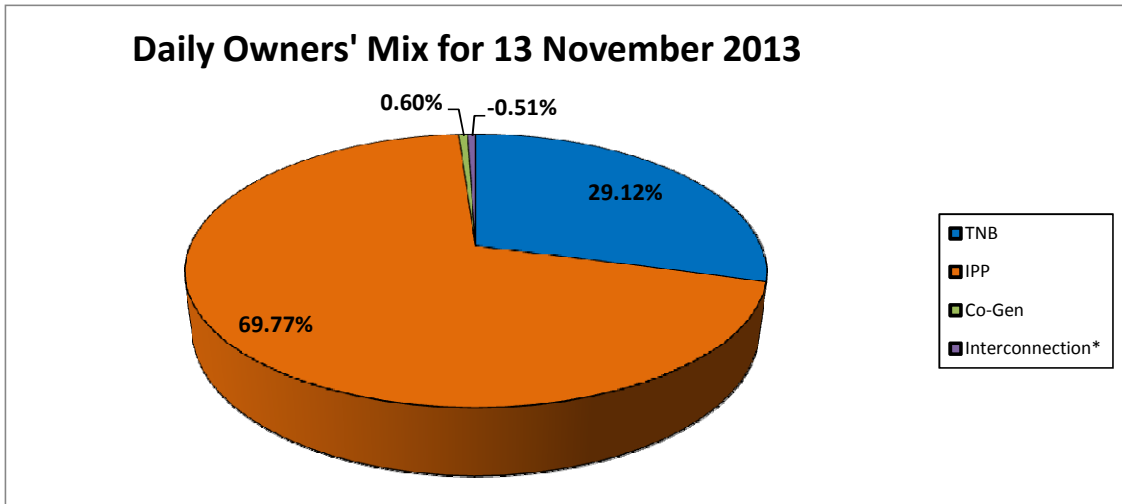
**GRID SYSTEM OPERATION SUMMARY (PENINSULAR MALAYSIA)**

	<b>FORECAST</b>	<b>ACTUAL</b>	<b>VARIANCE</b>	
<b>Maximum Demand for 13 November 2013</b>	15,669 MW	15,832 MW	1.04%	
<b>Energy Demand for 13 November 2013</b>	326.57 GWh	327.50 GWh	0.28%	
<b>Highest Maximum Demand (13 May 2013)</b>	16,298 MW	16,562 MW	1.62%	<b>*New MD</b>
<b>Highest Daily Energy Demand (25 June 2013)</b>	345.88 GWh	345.25 GWh	-0.18%	<b>*New Energy</b>

Prepared by:  
Electricity Market Operations  
Electricity Supply & Market Regulations Dept.  
Energy Commission Malaysia  
14-Nov-13

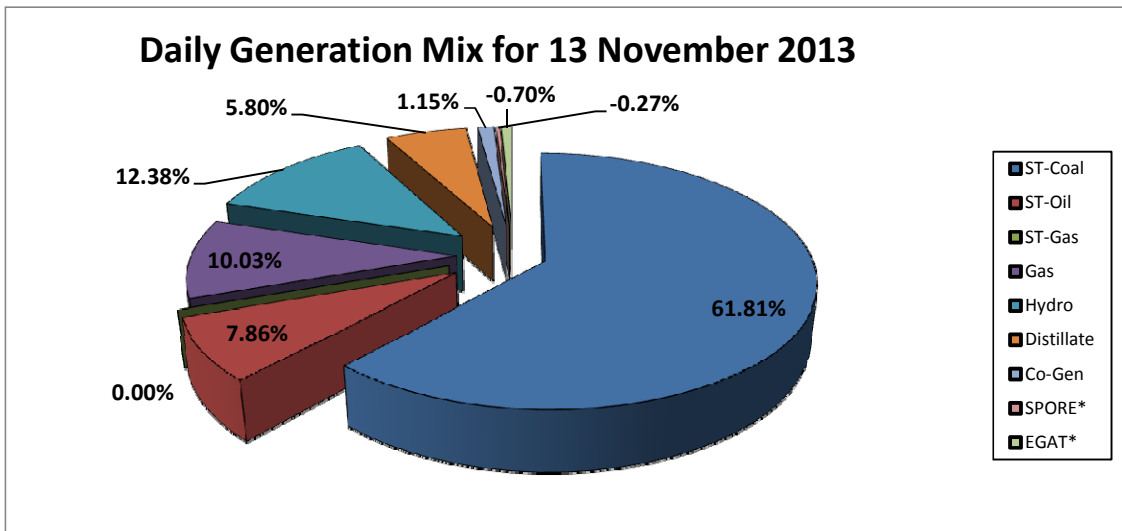
**Daily Owners' Mix for 13 November 2013**

TNB	95,372 MWh
IPP	228,495 MWh
Co-Gen	1,966 MWh
Interconnection*	(1,665) MWh



**Daily Generation Mix for 13 November 2013**

ST-Coal	106,008 MWh
ST-Oil	13,472 MWh
ST-Gas	- MWh
Gas	17,206 MWh
Hydro	21,237 MWh
Distillate	9,944 MWh
Co-Gen	1,966 MWh
SPORE*	(463) MWh
EGAT*	(1,202) MWh



\*Negative = energy is imported from Singapore and Thailand

Positive = energy is exported to Singapore and Thailand