

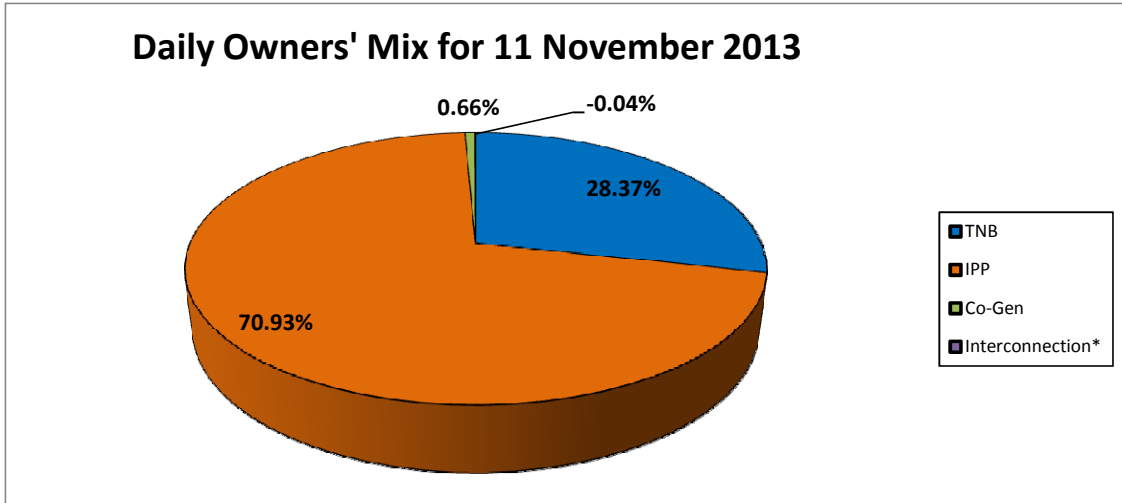
**GRID SYSTEM OPERATION SUMMARY (PENINSULAR MALAYSIA)**

	<b>FORECAST</b>	<b>ACTUAL</b>	<b>VARIANCE</b>	
<b>Maximum Demand for 11 November 2013</b>	15,291 MW	15,540 MW	1.63%	
<b>Energy Demand for 11 November 2013</b>	315.74 GWh	319.58 GWh	1.22%	
<b>Highest Maximum Demand (13 May 2013)</b>	16,298 MW	16,562 MW	1.62%	<b>*New MD</b>
<b>Highest Daily Energy Demand (25 June 2013)</b>	345.88 GWh	345.25 GWh	-0.18%	<b>*New Energy</b>

Prepared by:  
Electricity Market Operations  
Electricity Supply & Market Regulations Dept.  
Energy Commission Malaysia  
12-Nov-13

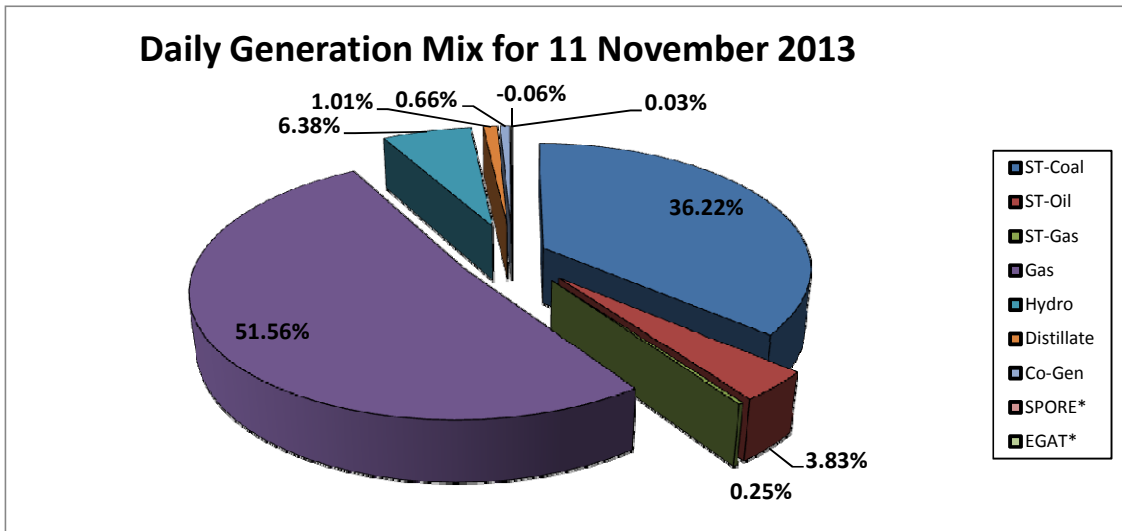
**Daily Owners' Mix for 11 November 2013**

TNB	90,662	MWh
IPP	226,690	MWh
Co-Gen	2,108	MWh
Interconnection*	(115)	MWh



**Daily Generation Mix for 11 November 2013**

ST-Coal	115,816	MWh
ST-Oil	12,244	MWh
ST-Gas	809	MWh
Gas	164,861	MWh
Hydro	20,391	MWh
Distillate	3,231	MWh
Co-Gen	2,108	MWh
SPORE*	82	MWh
EGAT*	(197)	MWh



\*Negative = energy is imported from Singapore and Thailand  
 Positive = energy is exported to Singapore and Thailand