

**GRID SYSTEM OPERATION SUMMARY (PENINSULAR MALAYSIA)**

	<b>FORECAST</b>	<b>ACTUAL</b>	<b>VARIANCE</b>	
<b>Maximum Demand for 10 November 2013</b>	12,832 MW	13,168 MW	2.62%	
<b>Energy Demand for 10 November 2013</b>	275.83 GWh	279.24 GWh	1.24%	
<b>Highest Maximum Demand (13 May 2013)</b>	16,298 MW	16,562 MW	1.62%	<b>*New MD</b>
<b>Highest Daily Energy Demand (25 June 2013)</b>	345.88 GWh	345.25 GWh	-0.18%	<b>*New Energy</b>

Prepared by:

Electricity Market Operations

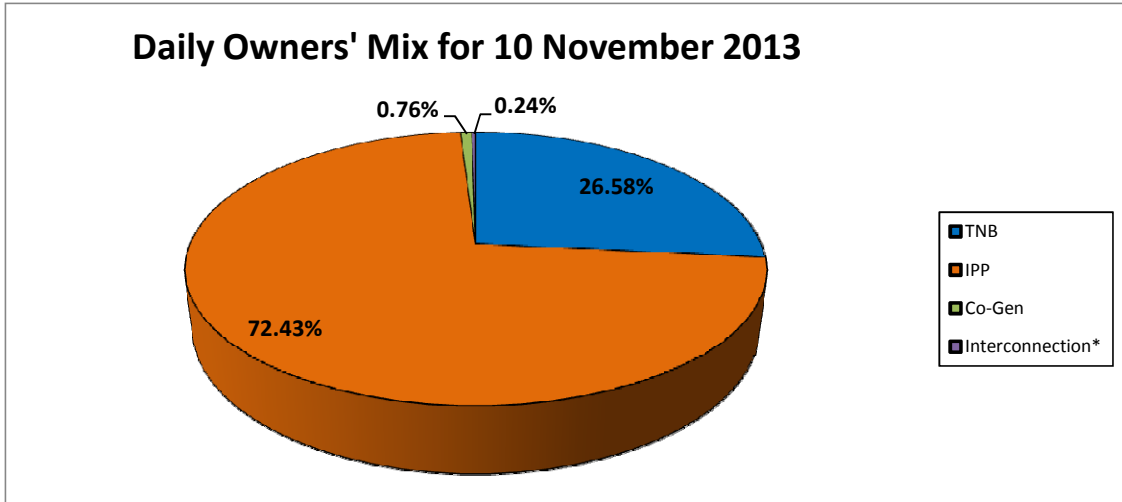
Electricity Supply & Market Regulations Dept.

Energy Commission Malaysia

11-Nov-13

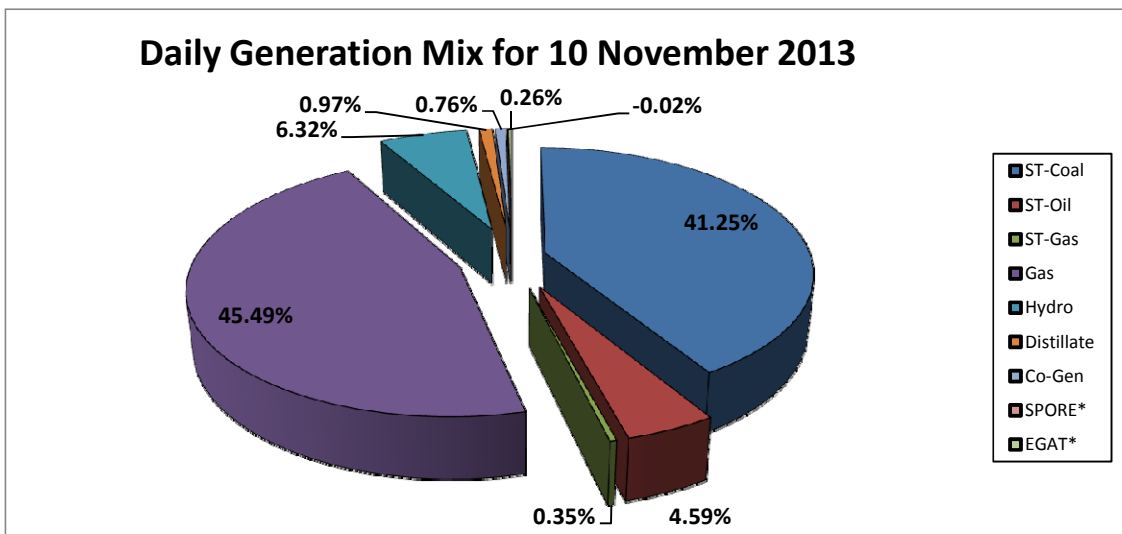
**Daily Owners' Mix for 10 November 2013**

TNB	74,593 MWh
IPP	203,294 MWh
Co-Gen	2,126 MWh
Interconnection*	664 MWh



**Daily Generation Mix for 10 November 2013**

ST-Coal	115,826 MWh
ST-Oil	12,899 MWh
ST-Gas	984 MWh
Gas	127,720 MWh
Hydro	17,748 MWh
Distillate	2,710 MWh
Co-Gen	2,126 MWh
SPORE*	(56) MWh
EGAT*	720 MWh



\*Negative = energy is imported from Singapore and Thailand  
 Positive = energy is exported to Singapore and Thailand