

GRID SYSTEM OPERATION SUMMARY (PENINSULAR MALAYSIA)

	FORECAST	ACTUAL	VARIANCE
Maximum Demand for 9 November 2013	13,689 MW	13,945 MW	1.87%
Energy Demand for 9 November 2013	299.43 GWh	303.04 GWh	1.21%
Highest Maximum Demand (13 May 2013)	16,298 MW	16,562 MW	1.62% *New MD
Highest Daily Energy Demand (25 June 2013)	345.88 GWh	345.25 GWh	-0.18% *New Energy

Prepared by:

Electricity Market Operations

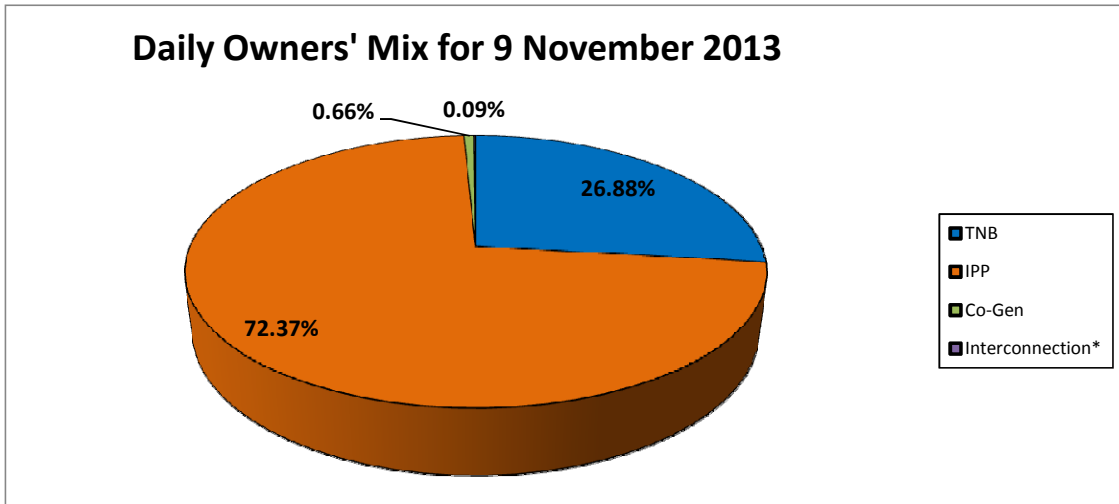
Electricity Supply & Market Regulations Dept.

Energy Commission Malaysia

10-Nov-13

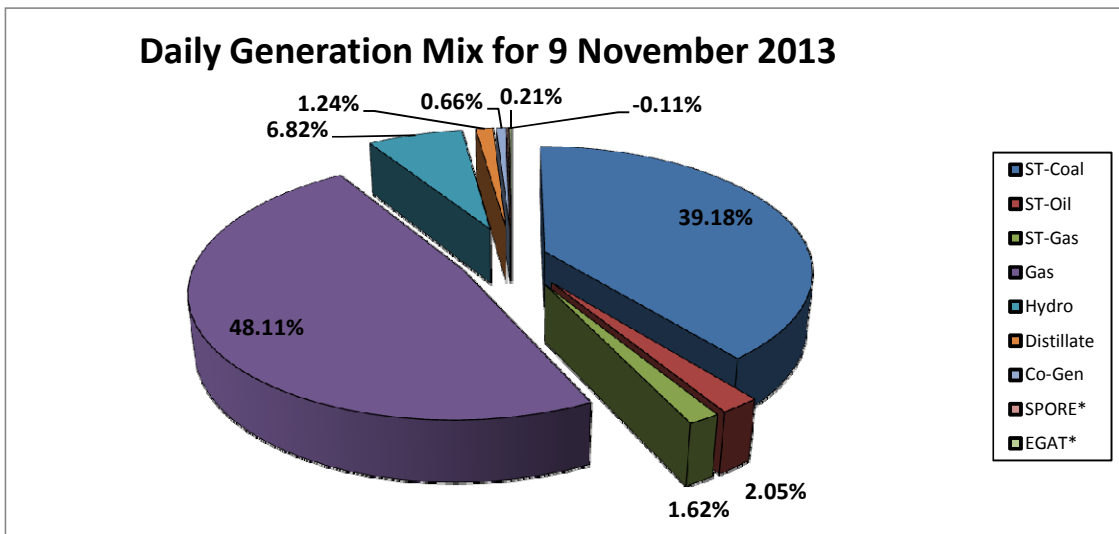
Daily Owners' Mix for 9 November 2013

TNB	81,614 MWh
IPP	219,715 MWh
Co-Gen	1,997 MWh
Interconnection*	286 MWh



Daily Generation Mix for 9 November 2013

ST-Coal	119,234 MWh
ST-Oil	6,233 MWh
ST-Gas	4,934 MWh
Gas	146,385 MWh
Hydro	20,755 MWh
Distillate	3,788 MWh
Co-Gen	1,997 MWh
SPORE*	(343) MWh
EGAT*	629 MWh



*Negative = energy is imported from Singapore and Thailand
 Positive = energy is exported to Singapore and Thailand