

GRID SYSTEM OPERATION SUMMARY (PENINSULAR MALAYSIA)

	FORECAST	ACTUAL	VARIANCE	
Maximum Demand for 8 November 2013	15,227 MW	15,349 MW	0.80%	
Energy Demand for 8 November 2013	320.92 GWh	322.16 GWh	0.39%	
Highest Maximum Demand (13 May 2013)	16,298 MW	16,562 MW	1.62%	*New MD
Highest Daily Energy Demand (25 June 2013)	345.88 GWh	345.25 GWh	-0.18%	*New Energy

Prepared by:

Electricity Market Operations

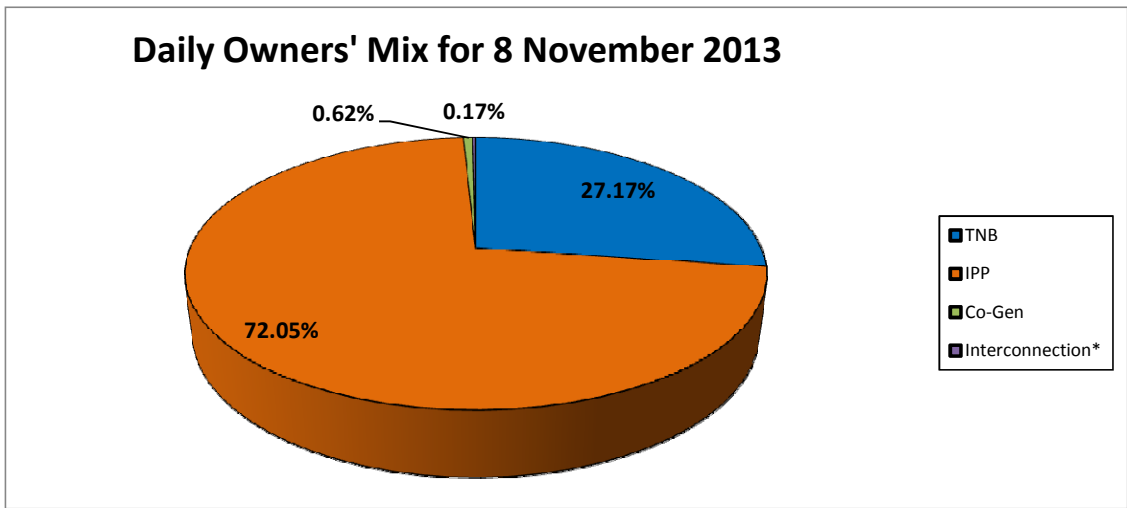
Electricity Supply & Market Regulations Dept.

Energy Commission Malaysia

09-Nov-13

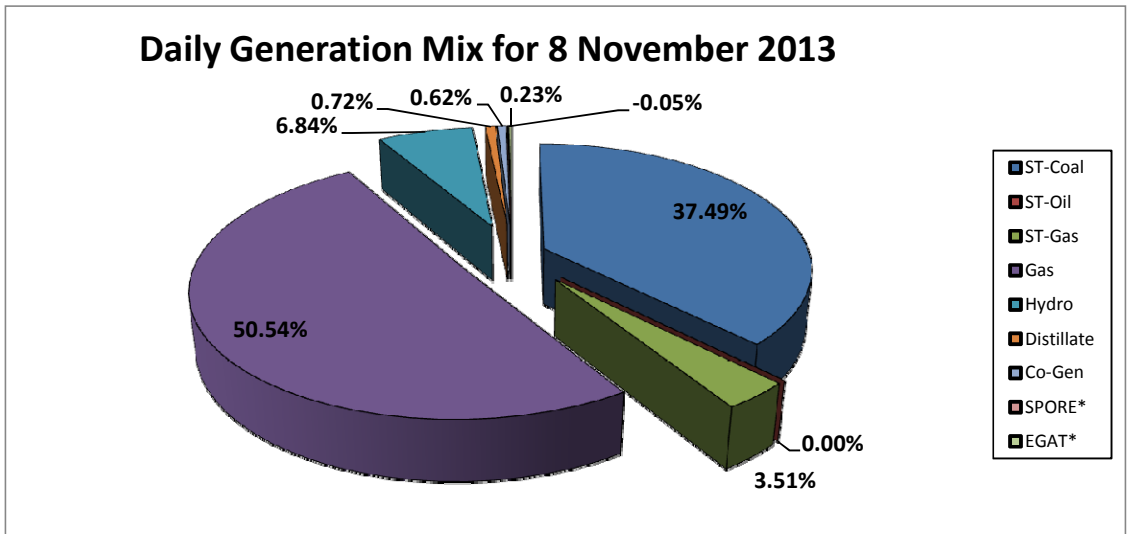
Daily Owners' Mix for 8 November 2013

TNB	87,577	MWh
IPP	232,264	MWh
Co-Gen	1,987	MWh
Interconnection*	554	MWh



Daily Generation Mix for 8 November 2013

ST-Coal	120,985	MWh
ST-Oil	-	MWh
ST-Gas	11,333	MWh
Gas	163,118	MWh
Hydro	22,076	MWh
Distillate	2,329	MWh
Co-Gen	1,987	MWh
SPORE*	(173)	MWh
EGAT*	727	MWh



*Negative = energy is imported from Singapore and Thailand
 Positive = energy is exported to Singapore and Thailand