

GRID SYSTEM OPERATION SUMMARY (PENINSULAR MALAYSIA)

	FORECAST	ACTUAL	VARIANCE	
Maximum Demand for 7 November 2013	15,335 MW	15,556 MW	1.44%	
Energy Demand for 7 November 2013	320.42 GWh	320.99 GWh	0.18%	
Highest Maximum Demand (13 May 2013)	16,298 MW	16,562 MW	1.62%	*New MD
Highest Daily Energy Demand (25 June 2013)	345.88 GWh	345.25 GWh	-0.18%	*New Energy

Prepared by:

Electricity Market Operations

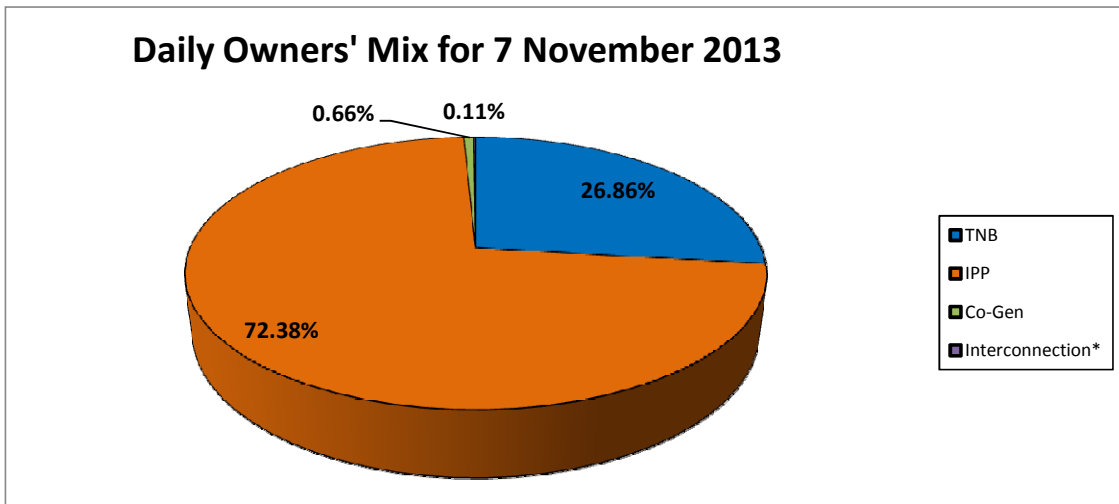
Electricity Supply & Market Regulations Dept.

Energy Commission Malaysia

08-Nov-13

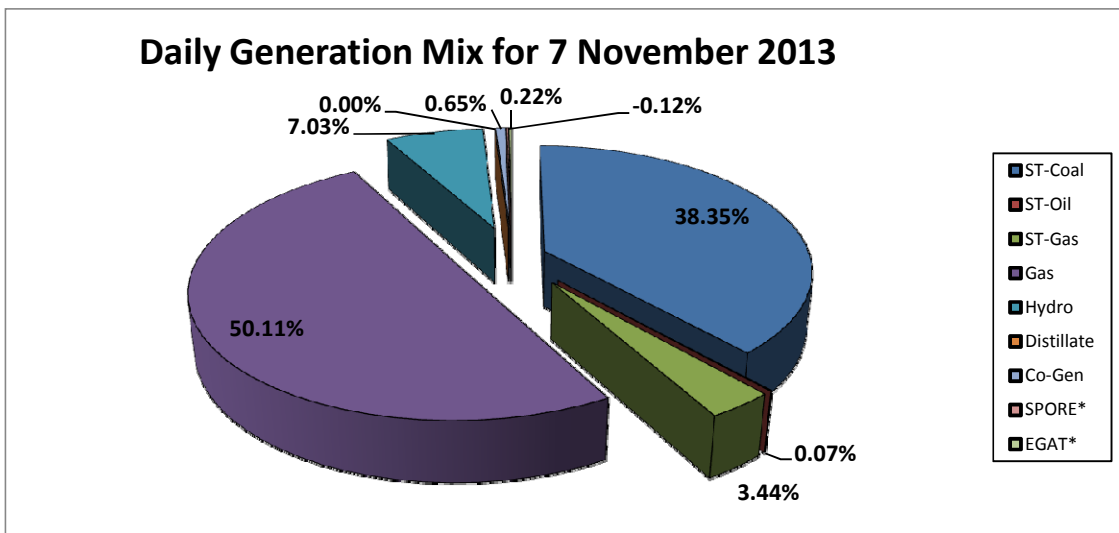
Daily Owners' Mix for 7 November 2013

TNB	86,370 MWh
IPP	232,759 MWh
Co-Gen	2,107 MWh
Interconnection*	345 MWh



Daily Generation Mix for 7 November 2013

ST-Coal	123,615 MWh
ST-Oil	238 MWh
ST-Gas	11,085 MWh
Gas	161,526 MWh
Hydro	22,665 MWh
Distillate	- MWh
Co-Gen	2,107 MWh
SPORE*	(375) MWh
EGAT*	720 MWh



*Negative = energy is imported from Singapore and Thailand
 Positive = energy is exported to Singapore and Thailand