

## GRID SYSTEM OPERATION SUMMARY (PENINSULAR MALAYSIA)

	FORECAST	ACTUAL	VARIANCE
Maximum Demand for 5 November 2013	13,594 MW	13,674 MW	0.59%
Energy Demand for 5 November 2013	285.48 GWh	287.89 GWh	0.84%
Highest Maximum Demand (13 May 2013)	16,298 MW	16,562 MW	1.62% <b>*New MD</b>
Highest Daily Energy Demand (25 June 2013)	345.88 GWh	345.25 GWh	-0.18% <b>*New Energy</b>

Prepared by:

Electricity Market Operations

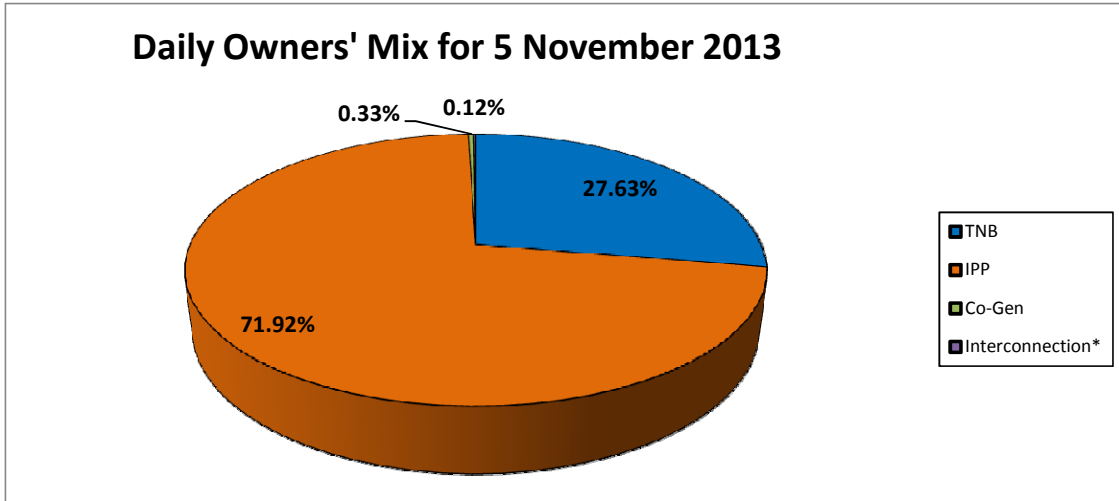
Electricity Supply & Market Regulations Dept.

Energy Commission Malaysia

06-Nov-13

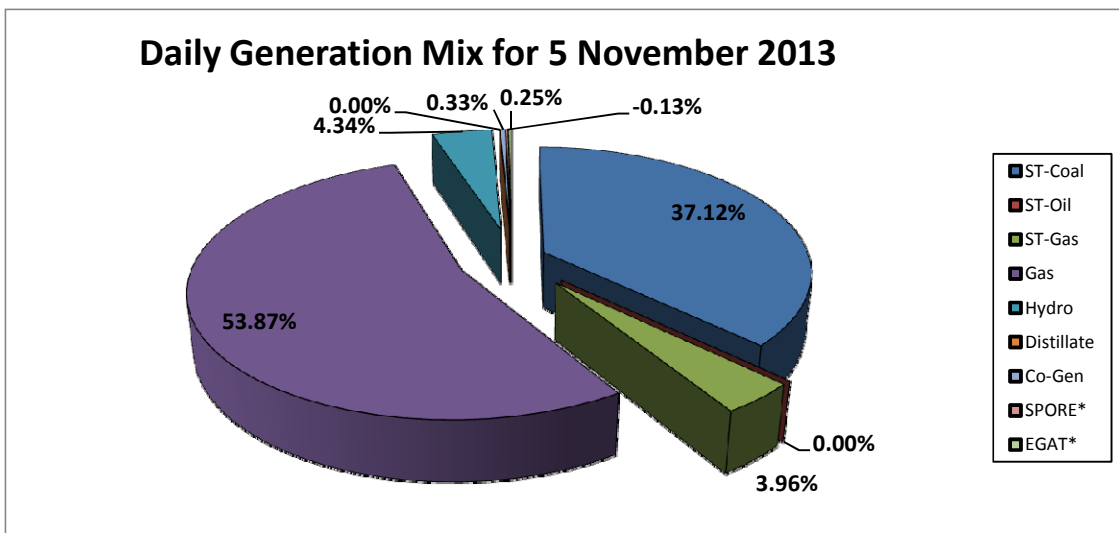
**Daily Owners' Mix for 5 November 2013**

TNB	79,706 MWh
IPP	207,444 MWh
Co-Gen	964 MWh
Interconnection*	332 MWh



**Daily Generation Mix for 5 November 2013**

ST-Coal	107,347 MWh
ST-Oil	- MWh
ST-Gas	11,453 MWh
Gas	155,801 MWh
Hydro	12,549 MWh
Distillate	- MWh
Co-Gen	964 MWh
SPORE*	(390) MWh
EGAT*	722 MWh



\*Negative = energy is imported from Singapore and Thailand  
 Positive = energy is exported to Singapore and Thailand