

GRID SYSTEM OPERATION SUMMARY (PENINSULAR MALAYSIA)

	FORECAST	ACTUAL	VARIANCE	
Maximum Demand for 2 November 2013	12,721 MW	12,564 MW	-1.23%	
Energy Demand for 2 November 2013	273.16 GWh	270.02 GWh	-1.15%	
Highest Maximum Demand (13 May 2013)	16,298 MW	16,562 MW	1.62%	*New MD
Highest Daily Energy Demand (25 June 2013)	345.88 GWh	345.25 GWh	-0.18%	*New Energy

Prepared by:

Electricity Market Operations

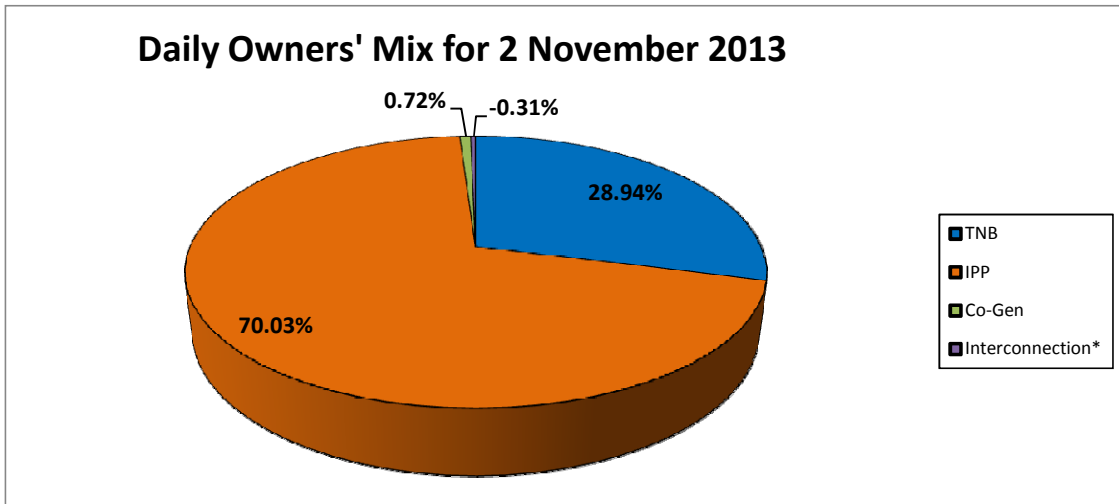
Electricity Supply & Market Regulations Dept.

Energy Commission Malaysia

03-Nov-13

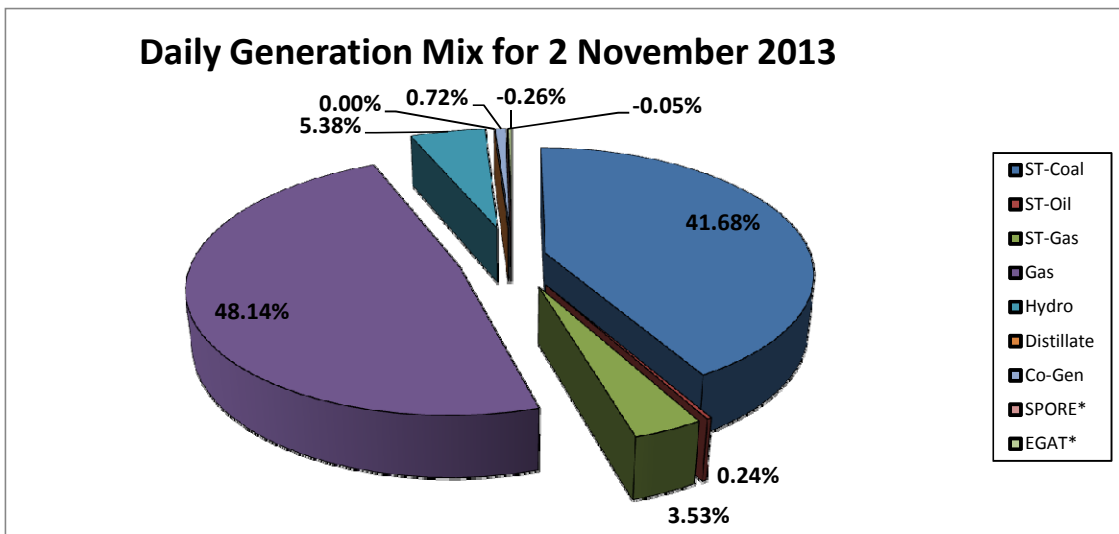
Daily Owners' Mix for 2 November 2013

TNB	78,144 MWh
IPP	189,080 MWh
Co-Gen	1,955 MWh
Interconnection*	(837) MWh



Daily Generation Mix for 2 November 2013

ST-Coal	112,536 MWh
ST-Oil	653 MWh
ST-Gas	9,527 MWh
Gas	129,980 MWh
Hydro	14,528 MWh
Distillate	- MWh
Co-Gen	1,955 MWh
SPORE*	(139) MWh
EGAT*	(698) MWh



*Negative = energy is imported from Singapore and Thailand
 Positive = energy is exported to Singapore and Thailand