

GRID SYSTEM OPERATION SUMMARY (PENINSULAR MALAYSIA)

	FORECAST	ACTUAL	VARIANCE	
Maximum Demand for 1 November 2013	14,637 MW	14,857 MW	1.50%	
Energy Demand for 1 November 2013	314.46 GWh	312.73 GWh	-0.55%	
Highest Maximum Demand (13 May 2013)	16,298 MW	16,562 MW	1.62%	*New MD
Highest Daily Energy Demand (25 June 2013)	345.88 GWh	345.25 GWh	-0.18%	*New Energy

Prepared by:

Electricity Market Operations

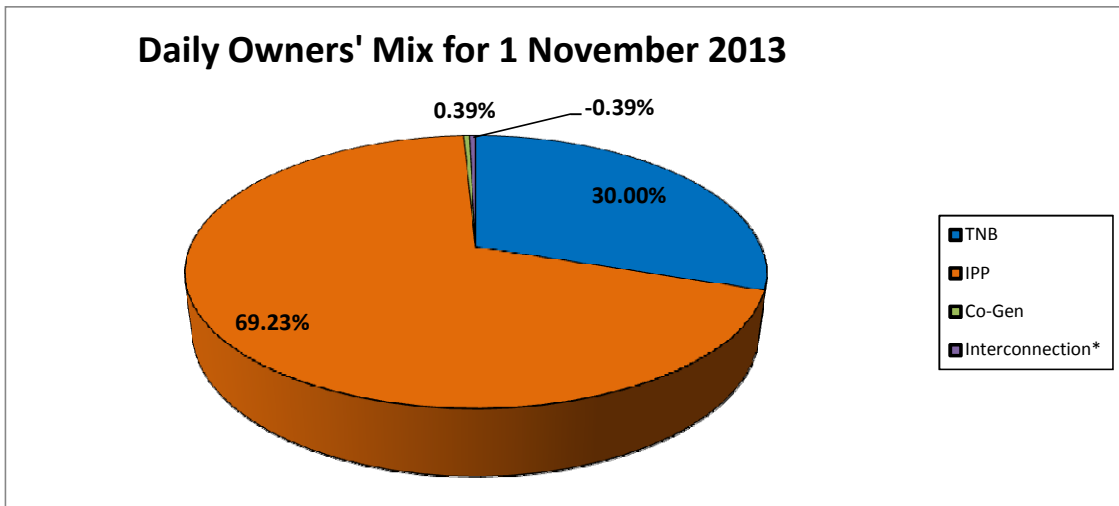
Electricity Supply & Market Regulations Dept.

Energy Commission Malaysia

02-Nov-13

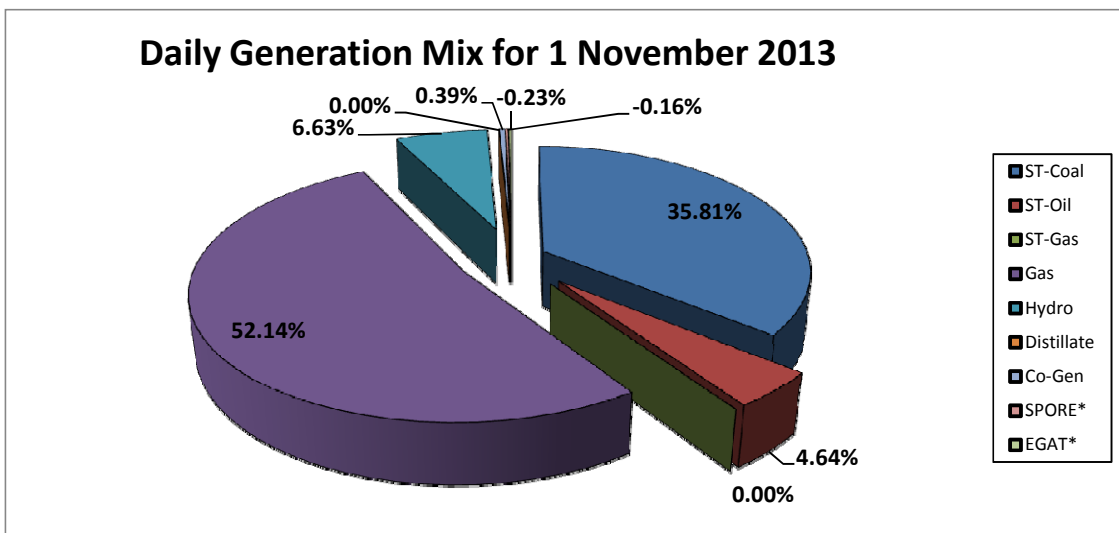
Daily Owners' Mix for 1 November 2013

TNB	93,805 MWh
IPP	216,513 MWh
Co-Gen	1,207 MWh
Interconnection*	(1,208) MWh



Daily Generation Mix for 1 November 2013

ST-Coal	112,001 MWh
ST-Oil	14,515 MWh
ST-Gas	- MWh
Gas	163,071 MWh
Hydro	20,731 MWh
Distillate	- MWh
Co-Gen	1,207 MWh
SPORE*	(501) MWh
EGAT*	(707) MWh



*Negative = energy is imported from Singapore and Thailand
 Positive = energy is exported to Singapore and Thailand