

## GRID SYSTEM OPERATION SUMMARY (PENINSULAR MALAYSIA)

	FORECAST	ACTUAL	VARIANCE
Maximum Demand for 31 October 2013	15,472 MW	15,619 MW	0.95%
Energy Demand for 31 October 2013	325.00 GWh	316.24 GWh	-2.70%
Highest Maximum Demand (13 May 2013)	16,298 MW	16,562 MW	1.62% <b>*New MD</b>
Highest Daily Energy Demand (25 June 2013)	345.88 GWh	345.25 GWh	-0.18% <b>*New Energy</b>

Prepared by:

Electricity Market Operations

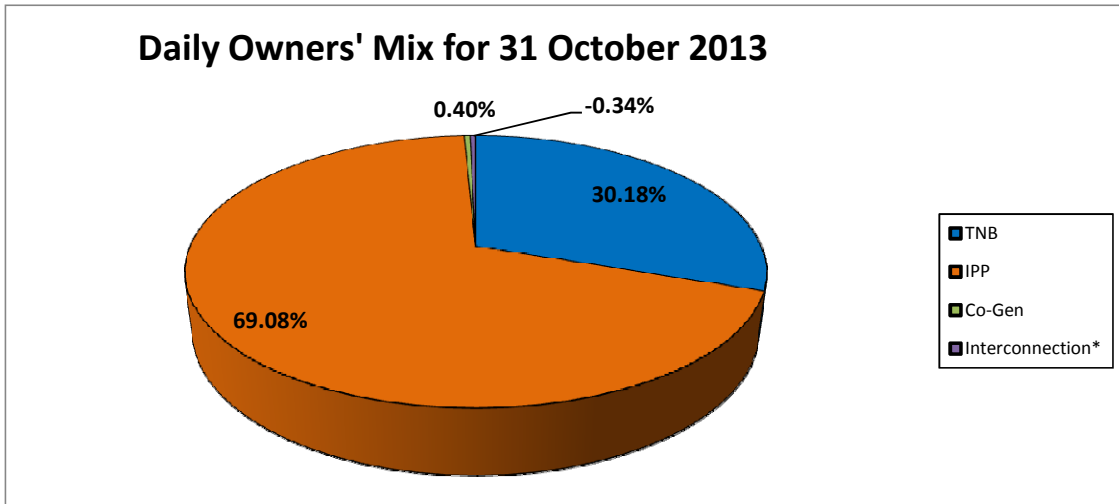
Electricity Supply & Market Regulations Dept.

Energy Commission Malaysia

01-Nov-13

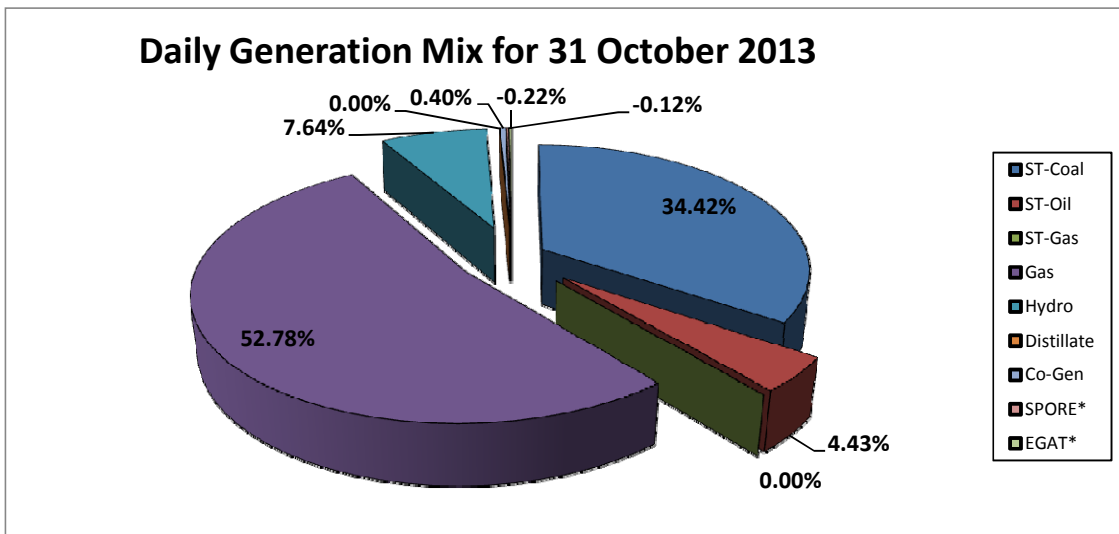
**Daily Owners' Mix for 31 October 2013**

TNB	97,411 MWh
IPP	222,966 MWh
Co-Gen	1,276 MWh
Interconnection*	(1,101) MWh



**Daily Generation Mix for 31 October 2013**

ST-Coal	111,050 MWh
ST-Oil	14,300 MWh
ST-Gas	- MWh
Gas	170,292 MWh
Hydro	24,643 MWh
Distillate	- MWh
Co-Gen	1,276 MWh
SPORE*	(394) MWh
EGAT*	(707) MWh



\*Negative = energy is imported from Singapore and Thailand  
 Positive = energy is exported to Singapore and Thailand