

GRID SYSTEM OPERATION SUMMARY (PENINSULAR MALAYSIA)

	FORECAST	ACTUAL	VARIANCE
Maximum Demand for 29 October 2013	15,189 MW	15,685 MW	3.27%
Energy Demand for 29 October 2013	319.58 GWh	324.15 GWh	1.43%
Highest Maximum Demand (13 May 2013)	16,298 MW	16,562 MW	1.62% *New MD
Highest Daily Energy Demand (25 June 2013)	345.88 GWh	345.25 GWh	-0.18% *New Energy

Prepared by:

Electricity Market Operations

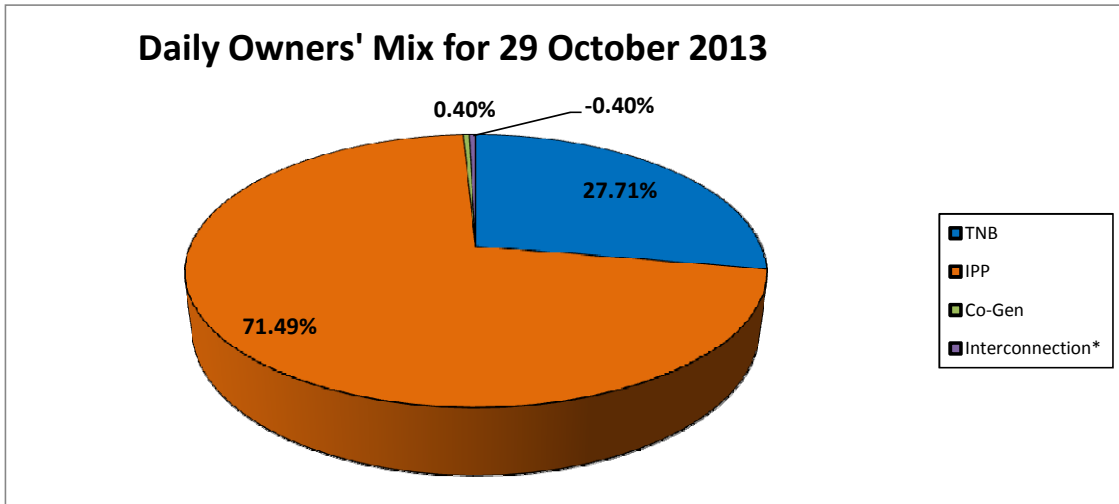
Electricity Supply & Market Regulations Dept.

Energy Commission Malaysia

30-Oct-13

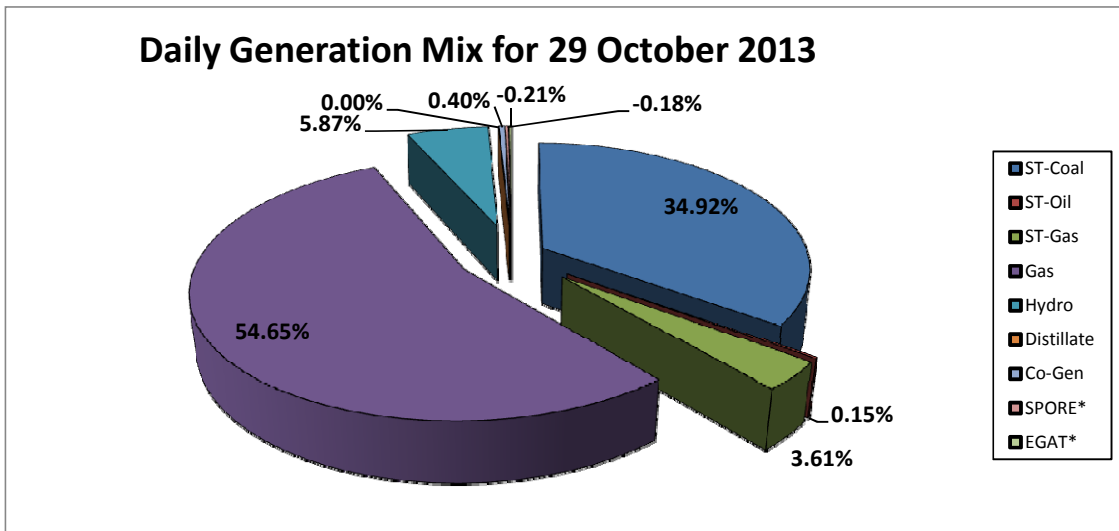
Daily Owners' Mix for 29 October 2013

TNB	89,813 MWh
IPP	231,751 MWh
Co-Gen	1,295 MWh
Interconnection*	(1,293) MWh



Daily Generation Mix for 29 October 2013

ST-Coal	113,206 MWh
ST-Oil	485 MWh
ST-Gas	11,705 MWh
Gas	177,138 MWh
Hydro	19,030 MWh
Distillate	- MWh
Co-Gen	1,295 MWh
SPORE*	(598) MWh
EGAT*	(695) MWh



*Negative = energy is imported from Singapore and Thailand
 Positive = energy is exported to Singapore and Thailand