

**GRID SYSTEM OPERATION SUMMARY (PENINSULAR MALAYSIA)**

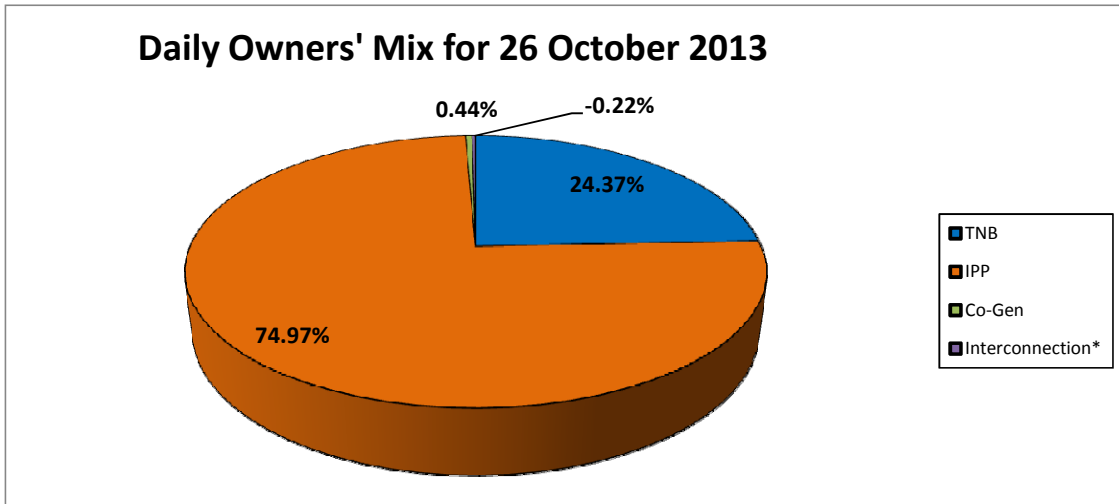
	<b>FORECAST</b>	<b>ACTUAL</b>	<b>VARIANCE</b>
<b>Maximum Demand for 26 October 2013</b>	13,607 MW	13,697 MW	0.66%
<b>Energy Demand for 26 October 2013</b>	298.62 GWh	297.89 GWh	-0.24%
<b>Highest Maximum Demand (13 May 2013)</b>	16,298 MW	16,562 MW	1.62%
<b>Highest Daily Energy Demand (25 June 2013)</b>	345.88 GWh	345.25 GWh	-0.18%

**\*New MD**  
**\*New Energy**

Prepared by:  
Electricity Market Operations  
Electricity Supply & Market Regulations Dept.  
Energy Commission Malaysia  
27-Oct-13

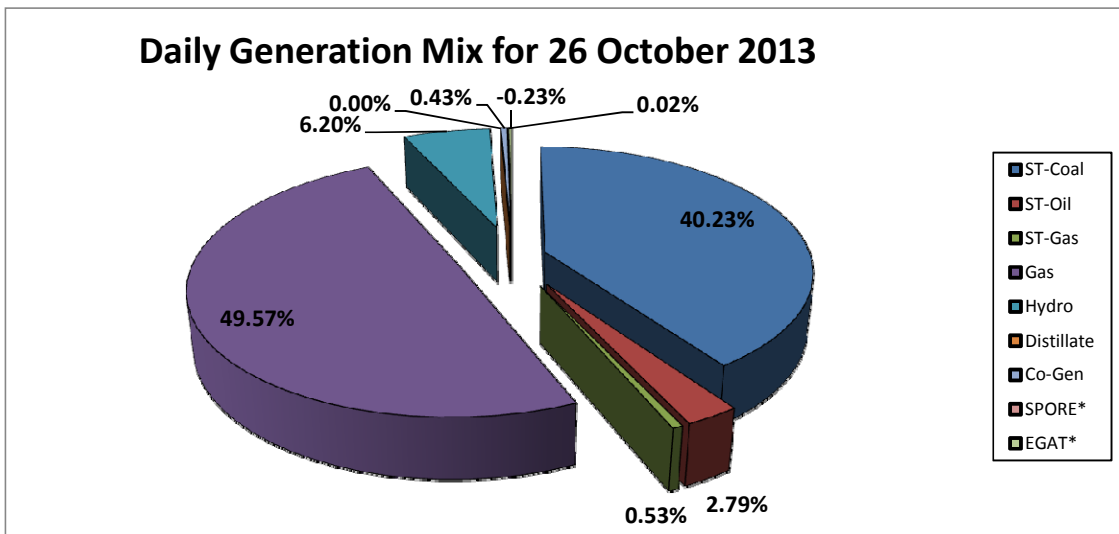
**Daily Owners' Mix for 26 October 2013**

TNB	72,604 MWh
IPP	223,337 MWh
Co-Gen	1,296 MWh
Interconnection*	(651) MWh



**Daily Generation Mix for 26 October 2013**

ST-Coal	119,873 MWh
ST-Oil	8,300 MWh
ST-Gas	1,579 MWh
Gas	147,707 MWh
Hydro	18,482 MWh
Distillate	- MWh
Co-Gen	1,296 MWh
SPORE*	45 MWh
EGAT*	(696) MWh



\*Negative = energy is imported from Singapore and Thailand  
 Positive = energy is exported to Singapore and Thailand