

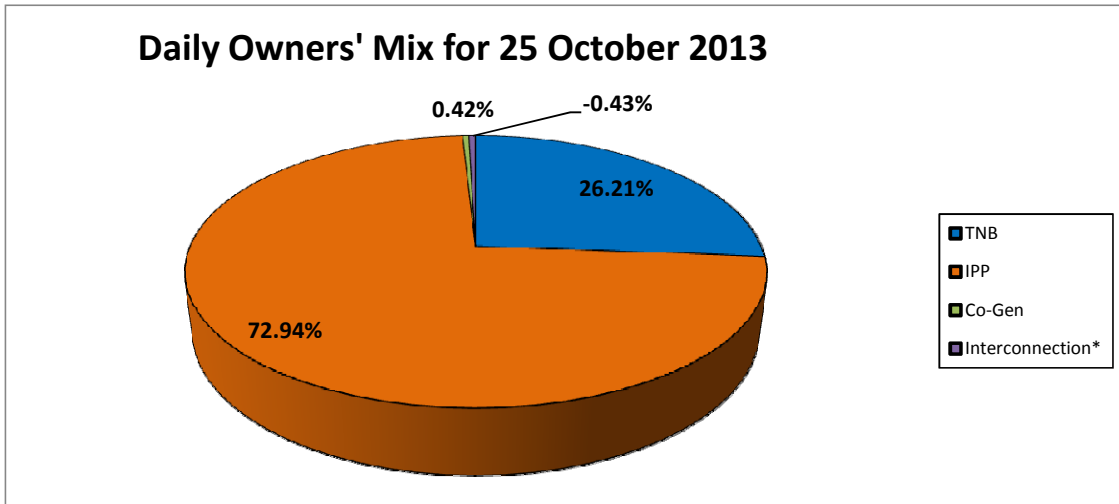
GRID SYSTEM OPERATION SUMMARY (PENINSULAR MALAYSIA)

	FORECAST	ACTUAL	VARIANCE	
Maximum Demand for 25 October 2013	14,856 MW	15,093 MW	1.60%	
Energy Demand for 25 October 2013	315.44 GWh	318.48 GWh	0.96%	
Highest Maximum Demand (13 May 2013)	16,298 MW	16,562 MW	1.62%	*New MD
Highest Daily Energy Demand (25 June 2013)	345.88 GWh	345.25 GWh	-0.18%	*New Energy

Prepared by:
Electricity Market Operations
Electricity Supply & Market Regulations Dept.
Energy Commission Malaysia
26-Oct-13

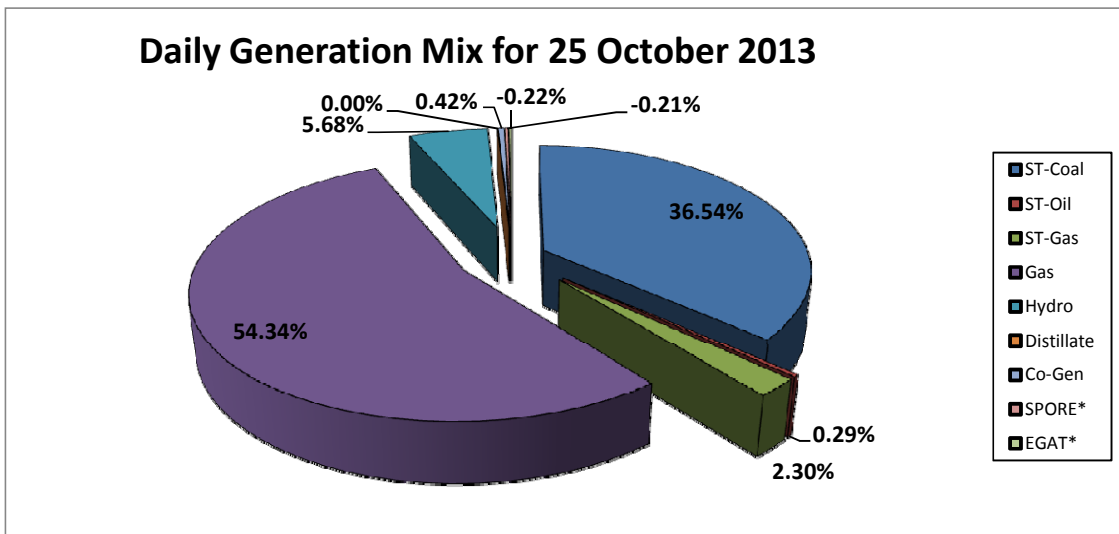
Daily Owners' Mix for 25 October 2013

TNB	83,476 MWh
IPP	232,300 MWh
Co-Gen	1,335 MWh
Interconnection*	(1,364) MWh



Daily Generation Mix for 25 October 2013

ST-Coal	116,382 MWh
ST-Oil	929 MWh
ST-Gas	7,311 MWh
Gas	173,062 MWh
Hydro	18,092 MWh
Distillate	- MWh
Co-Gen	1,335 MWh
SPORE*	(672) MWh
EGAT*	(692) MWh



*Negative = energy is imported from Singapore and Thailand
 Positive = energy is exported to Singapore and Thailand