

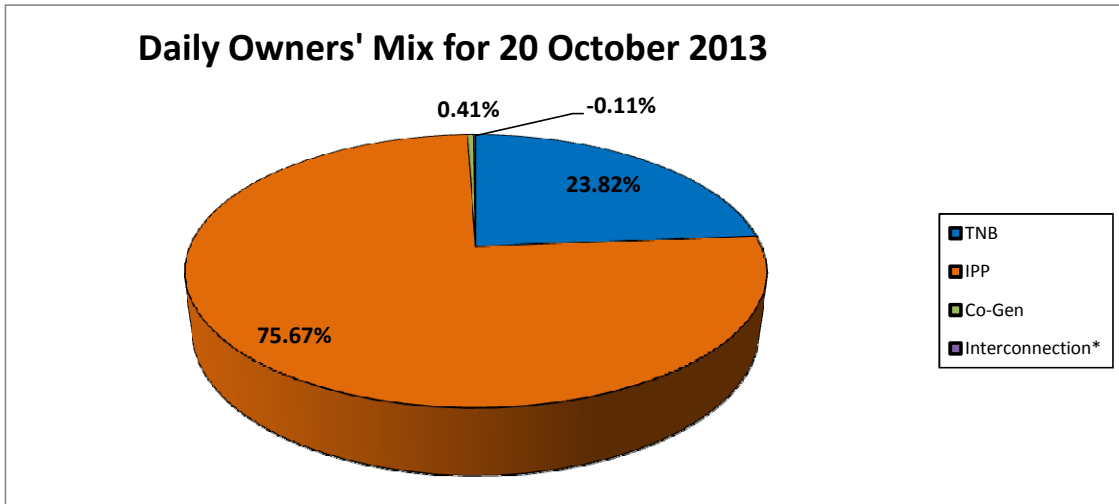
GRID SYSTEM OPERATION SUMMARY (PENINSULAR MALAYSIA)

	FORECAST	ACTUAL	VARIANCE	
Maximum Demand for 20 October 2013	12,989 MW	13,004 MW	0.12%	
Energy Demand for 20 October 2013	282.12 GWh	274.25 GWh	-2.79%	
Highest Maximum Demand (13 May 2013)	16,298 MW	16,562 MW	1.62%	*New MD
Highest Daily Energy Demand (25 June 2013)	345.88 GWh	345.25 GWh	-0.18%	*New Energy

Prepared by:
Electricity Market Operations
Electricity Supply & Market Regulations Dept.
Energy Commission Malaysia
21-Oct-13

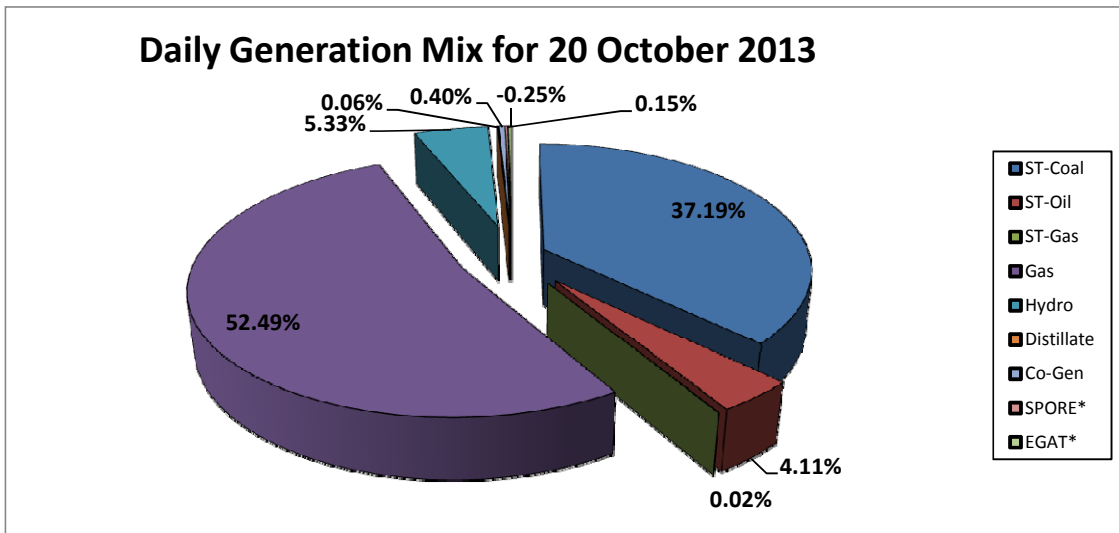
Daily Owners' Mix for 20 October 2013

TNB	65,367	MWh
IPP	207,652	MWh
Co-Gen	1,113	MWh
Interconnection*	(296)	MWh



Daily Generation Mix for 20 October 2013

ST-Coal	102,369	MWh
ST-Oil	11,299	MWh
ST-Gas	65	MWh
Gas	144,470	MWh
Hydro	14,663	MWh
Distillate	153	MWh
Co-Gen	1,113	MWh
SPORE*	400	MWh
EGAT*	(696)	MWh



*Negative = energy is imported from Singapore and Thailand

Positive = energy is exported to Singapore and Thailand