

GRID SYSTEM OPERATION SUMMARY (PENINSULAR MALAYSIA)

	FORECAST	ACTUAL	VARIANCE	
Maximum Demand for 19 October 2013	13,666 MW	13,845 MW	1.31%	
Energy Demand for 19 October 2013	303.49 GWh	301.13 GWh	-0.78%	
Highest Maximum Demand (13 May 2013)	16,298 MW	16,562 MW	1.62%	*New MD
Highest Daily Energy Demand (25 June 2013)	345.88 GWh	345.25 GWh	-0.18%	*New Energy

Prepared by:

Electricity Market Operations

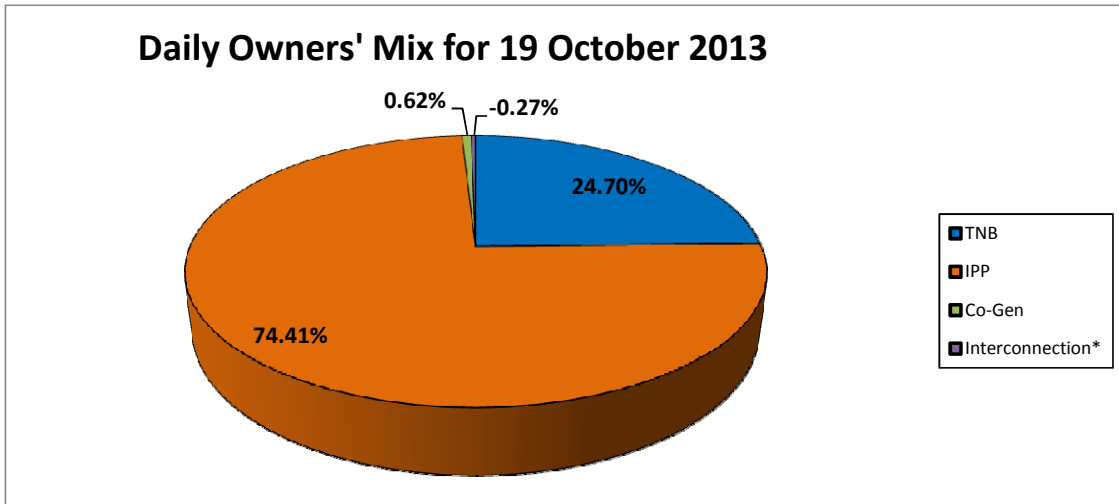
Electricity Supply & Market Regulations Dept.

Energy Commission Malaysia

20-Oct-13

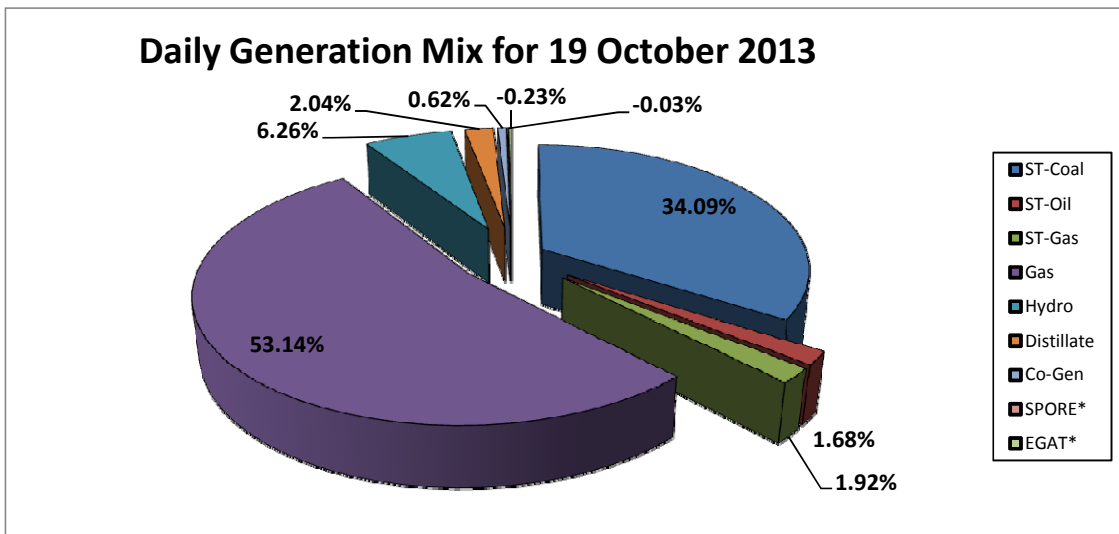
Daily Owners' Mix for 19 October 2013

TNB	74,373 MWh
IPP	224,077 MWh
Co-Gen	1,878 MWh
Interconnection*	(799) MWh



Daily Generation Mix for 19 October 2013

ST-Coal	102,640 MWh
ST-Oil	5,055 MWh
ST-Gas	5,767 MWh
Gas	160,015 MWh
Hydro	18,843 MWh
Distillate	6,130 MWh
Co-Gen	1,878 MWh
SPORE*	(102) MWh
EGAT*	(697) MWh



*Negative = energy is imported from Singapore and Thailand
 Positive = energy is exported to Singapore and Thailand