

GRID SYSTEM OPERATION SUMMARY (PENINSULAR MALAYSIA)

	FORECAST	ACTUAL	VARIANCE
Maximum Demand for 18 October 2013	15,517 MW	15,487 MW	-0.19%
Energy Demand for 18 October 2013	326.03 GWh	325.97 GWh	-0.02%
Highest Maximum Demand (13 May 2013)	16,298 MW	16,562 MW	1.62% *New MD
Highest Daily Energy Demand (25 June 2013)	345.88 GWh	345.25 GWh	-0.18% *New Energy

Prepared by:

Electricity Market Operations

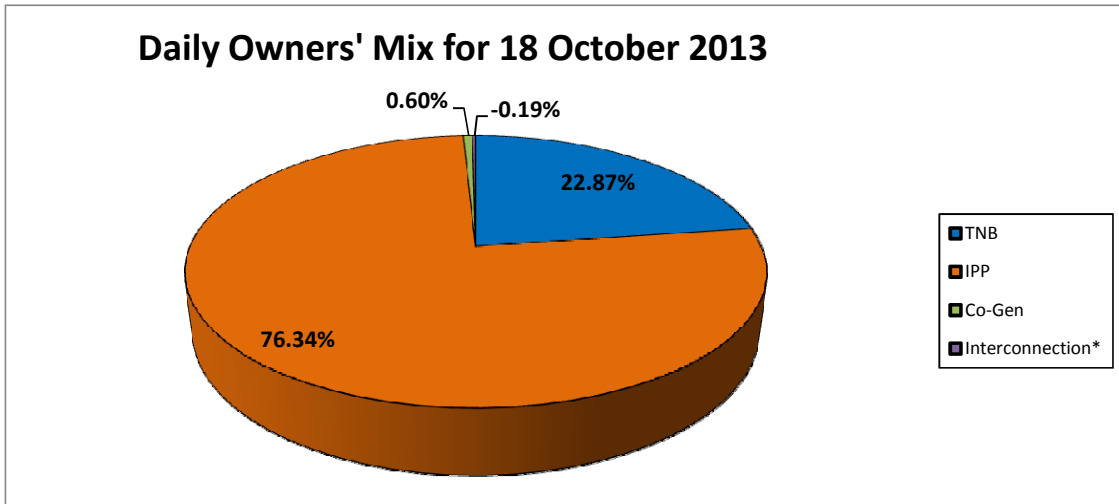
Electricity Supply & Market Regulations Dept.

Energy Commission Malaysia

19-Oct-13

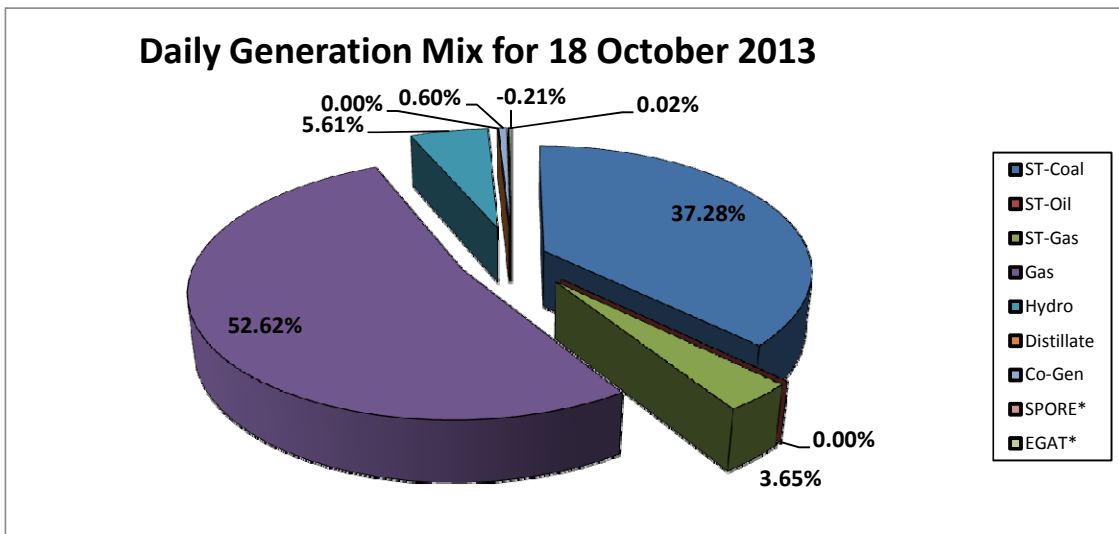
Daily Owners' Mix for 18 October 2013

TNB	74,534 MWh
IPP	248,857 MWh
Co-Gen	1,960 MWh
Interconnection*	(623) MWh



Daily Generation Mix for 18 October 2013

ST-Coal	121,589 MWh
ST-Oil	- MWh
ST-Gas	11,904 MWh
Gas	171,617 MWh
Hydro	18,281 MWh
Distillate	- MWh
Co-Gen	1,960 MWh
SPORE*	76 MWh
EGAT*	(699) MWh



*Negative = energy is imported from Singapore and Thailand
 Positive = energy is exported to Singapore and Thailand