

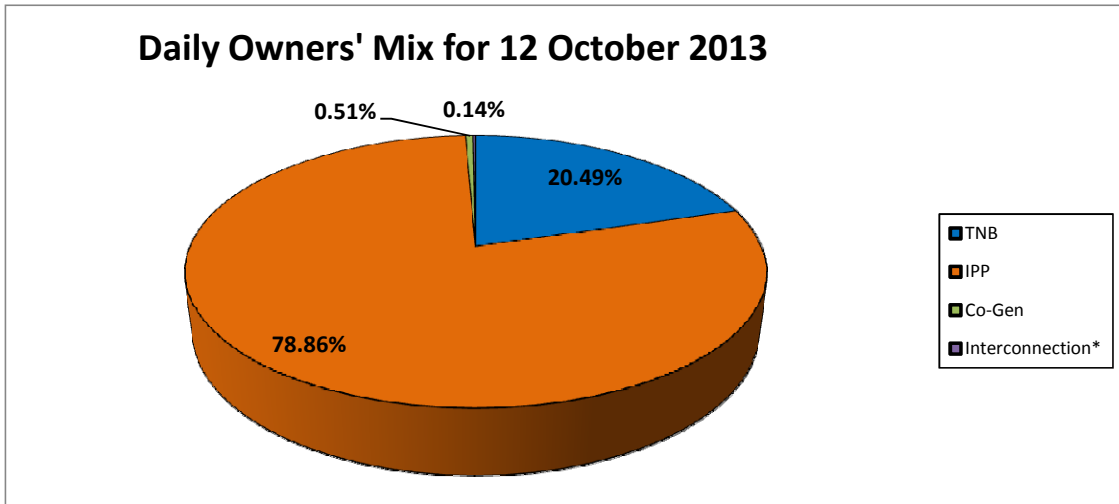
GRID SYSTEM OPERATION SUMMARY (PENINSULAR MALAYSIA)

	FORECAST	ACTUAL	VARIANCE	
Maximum Demand for 12 October 2013	13,795 MW	13,557 MW	-1.73%	
Energy Demand for 12 October 2013	300.30 GWh	299.67 GWh	-0.21%	
Highest Maximum Demand (13 May 2013)	16,298 MW	16,562 MW	1.62%	*New MD
Highest Daily Energy Demand (25 June 2013)	345.88 GWh	345.25 GWh	-0.18%	*New Energy

Prepared by:
Electricity Market Operations
Electricity Supply & Market Regulations Dept.
Energy Commission Malaysia
13-Oct-13

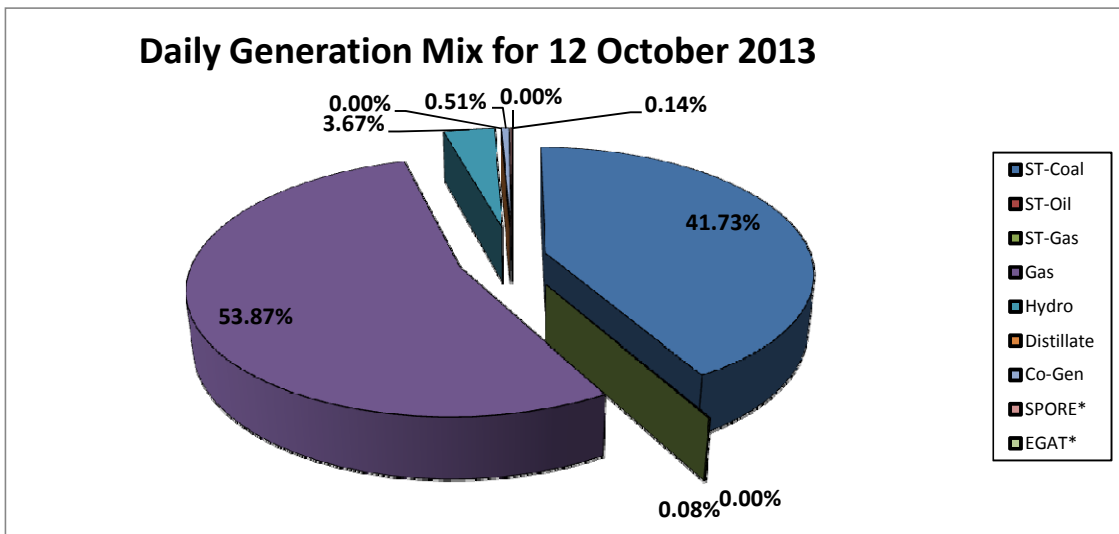
Daily Owners' Mix for 12 October 2013

TNB	61,564	MWh
IPP	236,995	MWh
Co-Gen	1,537	MWh
Interconnection*	426	MWh



Daily Generation Mix for 12 October 2013

ST-Coal	125,407	MWh
ST-Oil	-	MWh
ST-Gas	234	MWh
Gas	161,902	MWh
Hydro	11,016	MWh
Distillate	-	MWh
Co-Gen	1,537	MWh
SPORE*	426	MWh
EGAT*	-	MWh



*Negative = energy is imported from Singapore and Thailand
 Positive = energy is exported to Singapore and Thailand