

**GRID SYSTEM OPERATION SUMMARY (PENINSULAR MALAYSIA)**

	<b>FORECAST</b>	<b>ACTUAL</b>	<b>VARIANCE</b>	
<b>Maximum Demand for 9 October 2013</b>	15,916 MW	16,031 MW	0.72%	
<b>Energy Demand for 9 October 2013</b>	332.67 GWh	333.94 GWh	0.38%	
<b>Highest Maximum Demand (13 May 2013)</b>	16,298 MW	16,562 MW	1.62%	<b>*New MD</b>
<b>Highest Daily Energy Demand (25 June 2013)</b>	345.88 GWh	345.25 GWh	-0.18%	<b>*New Energy</b>

Prepared by:

Electricity Market Operations

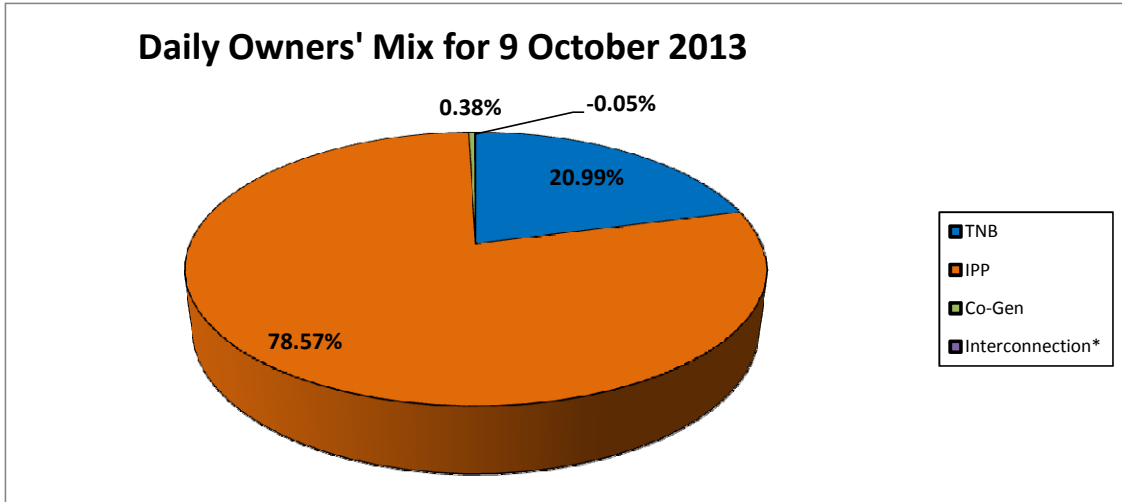
Electricity Supply & Market Regulations Dept.

Energy Commission Malaysia

10-Oct-13

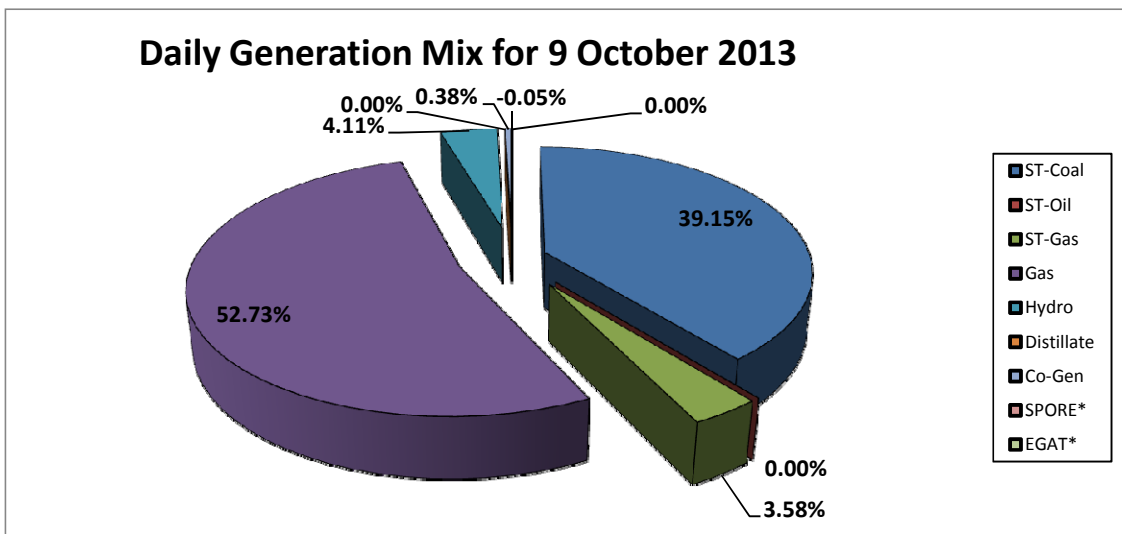
**Daily Owners' Mix for 9 October 2013**

TNB	70,108 MWh
IPP	262,380 MWh
Co-Gen	1,277 MWh
Interconnection*	(172) MWh



**Daily Generation Mix for 9 October 2013**

ST-Coal	130,739 MWh
ST-Oil	- MWh
ST-Gas	11,945 MWh
Gas	176,085 MWh
Hydro	13,719 MWh
Distillate	- MWh
Co-Gen	1,277 MWh
SPORE*	(12) MWh
EGAT*	(160) MWh



\*Negative = energy is imported from Singapore and Thailand  
 Positive = energy is exported to Singapore and Thailand