

GRID SYSTEM OPERATION SUMMARY (PENINSULAR MALAYSIA)

	FORECAST	ACTUAL	VARIANCE
Maximum Demand for 8 October 2013	15,786 MW	16,030 MW	1.55%
Energy Demand for 8 October 2013	331.72 GWh	331.68 GWh	-0.01%
Highest Maximum Demand (13 May 2013)	16,298 MW	16,562 MW	1.62% *New MD
Highest Daily Energy Demand (25 June 2013)	345.88 GWh	345.25 GWh	-0.18% *New Energy

Prepared by:

Electricity Market Operations

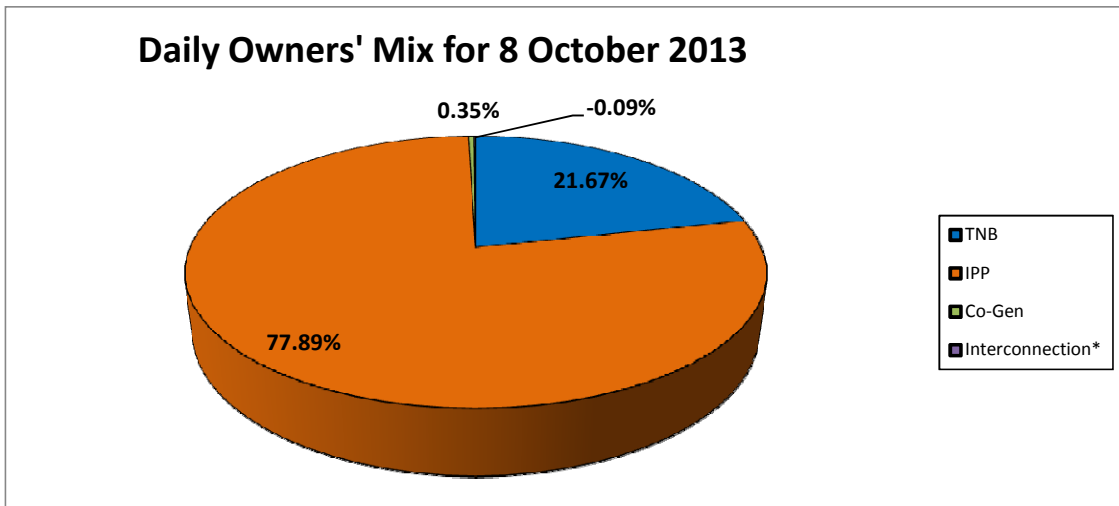
Electricity Supply & Market Regulations Dept.

Energy Commission Malaysia

09-Oct-13

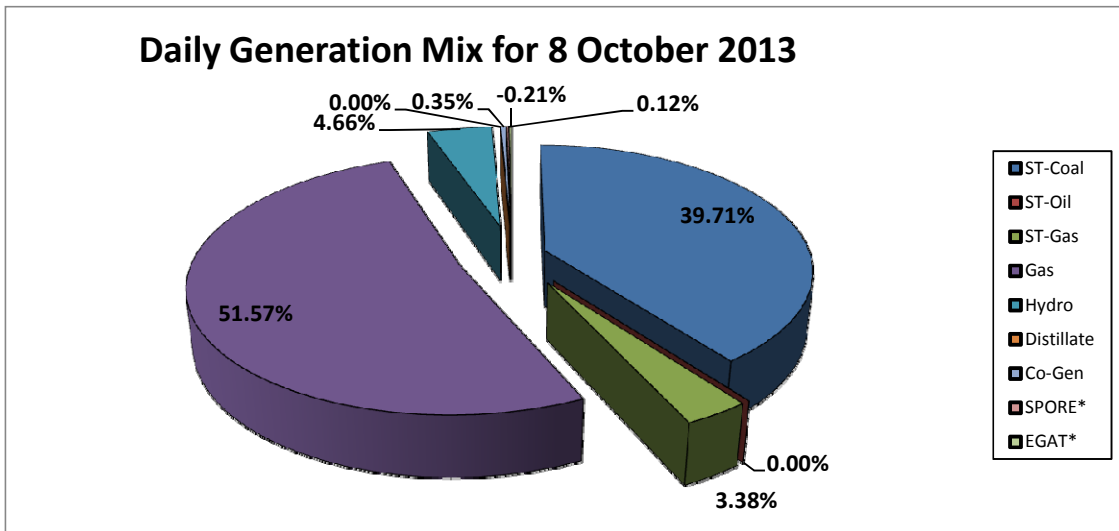
Daily Owners' Mix for 8 October 2013

TNB	71,870 MWh
IPP	258,319 MWh
Co-Gen	1,175 MWh
Interconnection*	(295) MWh



Daily Generation Mix for 8 October 2013

ST-Coal	132,017 MWh
ST-Oil	- MWh
ST-Gas	11,229 MWh
Gas	171,458 MWh
Hydro	15,485 MWh
Distillate	- MWh
Co-Gen	1,175 MWh
SPORE*	406 MWh
EGAT*	(701) MWh



*Negative = energy is imported from Singapore and Thailand
 Positive = energy is exported to Singapore and Thailand