

## GRID SYSTEM OPERATION SUMMARY (PENINSULAR MALAYSIA)

	FORECAST	ACTUAL	VARIANCE
Maximum Demand for 7 October 2013	15,600 MW	15,682 MW	0.53%
Energy Demand for 7 October 2013	322.33 GWh	322.19 GWh	-0.04%
Highest Maximum Demand (13 May 2013)	16,298 MW	16,562 MW	1.62% <b>*New MD</b>
Highest Daily Energy Demand (25 June 2013)	345.88 GWh	345.25 GWh	-0.18% <b>*New Energy</b>

Prepared by:

Electricity Market Operations

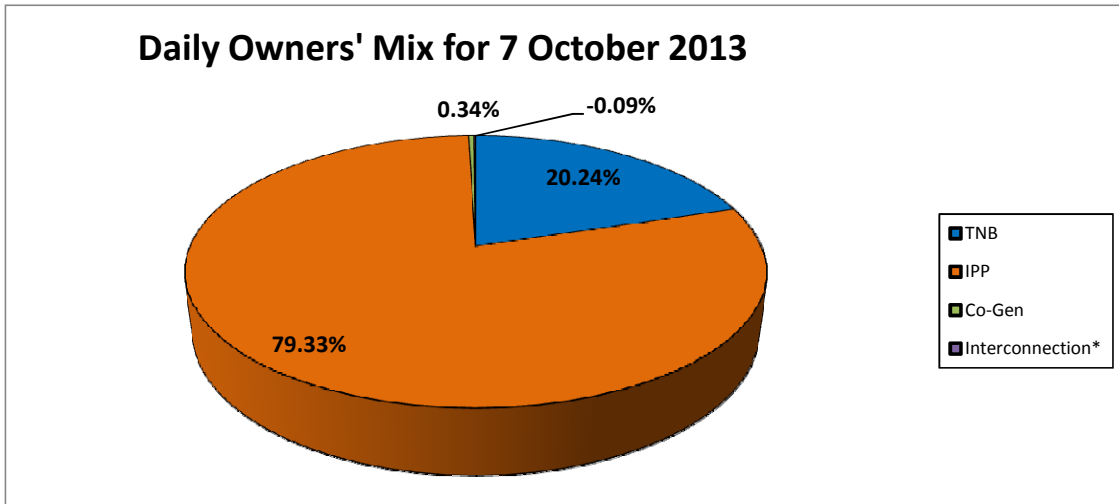
Electricity Supply & Market Regulations Dept.

Energy Commission Malaysia

08-Oct-13

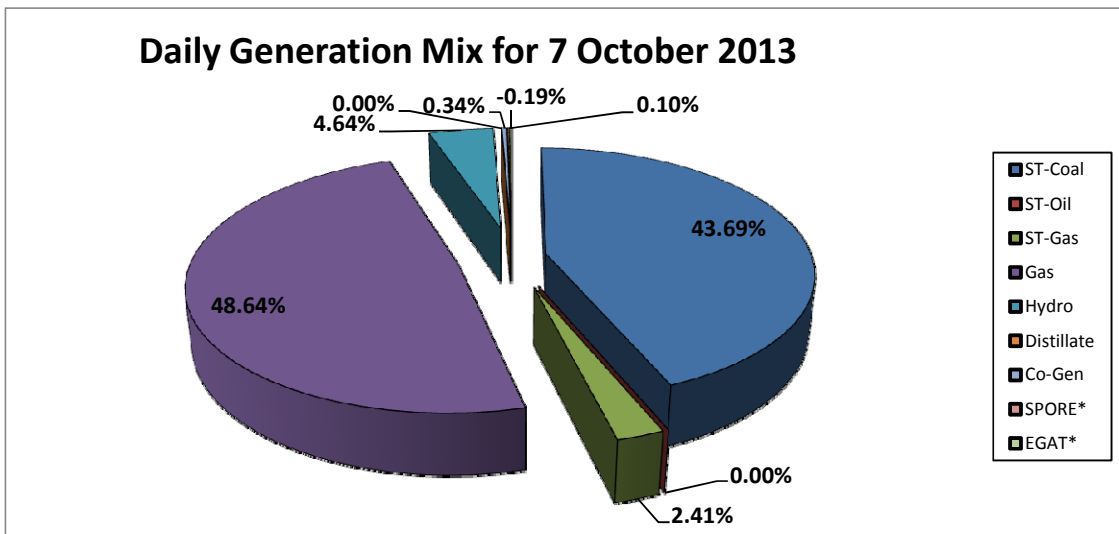
**Daily Owners' Mix for 7 October 2013**

TNB	65,129 MWh
IPP	255,300 MWh
Co-Gen	1,106 MWh
Interconnection*	(294) MWh



**Daily Generation Mix for 7 October 2013**

ST-Coal	140,873 MWh
ST-Oil	- MWh
ST-Gas	7,758 MWh
Gas	156,827 MWh
Hydro	14,971 MWh
Distillate	- MWh
Co-Gen	1,106 MWh
SPORE*	314 MWh
EGAT*	(608) MWh



\*Negative = energy is imported from Singapore and Thailand  
 Positive = energy is exported to Singapore and Thailand