

## GRID SYSTEM OPERATION SUMMARY (PENINSULAR MALAYSIA)

	FORECAST	ACTUAL	VARIANCE
Maximum Demand for 5 October 2013	13,955 MW	13,874 MW	-0.58%
Energy Demand for 5 October 2013	304.33 GWh	302.06 GWh	-0.75%
Highest Maximum Demand (13 May 2013)	16,298 MW	16,562 MW	1.62%
Highest Daily Energy Demand (25 June 2013)	345.88 GWh	345.25 GWh	-0.18%

\*New MD  
\*New Energy

Prepared by:

Electricity Market Operations

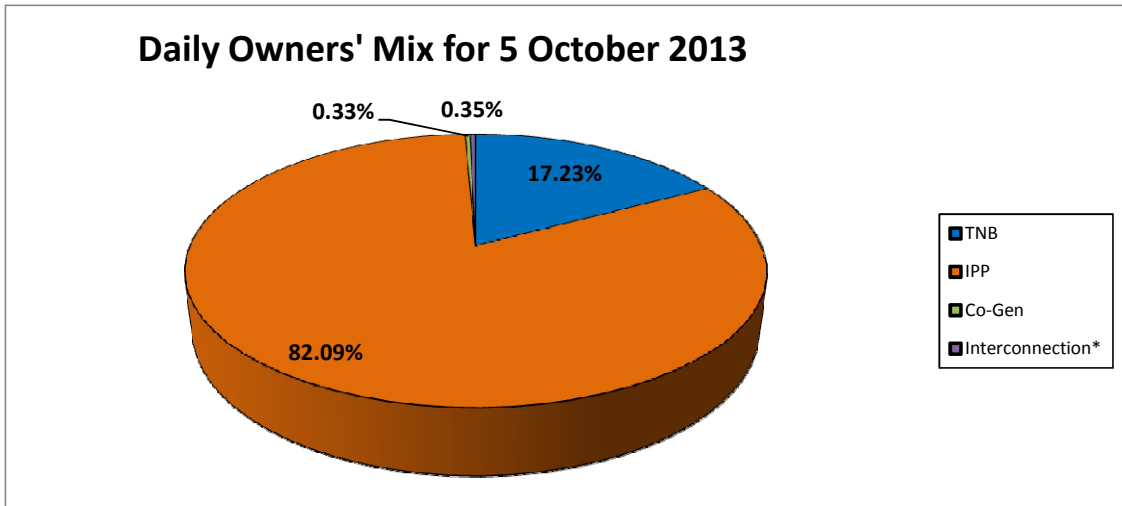
Electricity Supply & Market Regulations Dept.

Energy Commission Malaysia

06-Oct-13

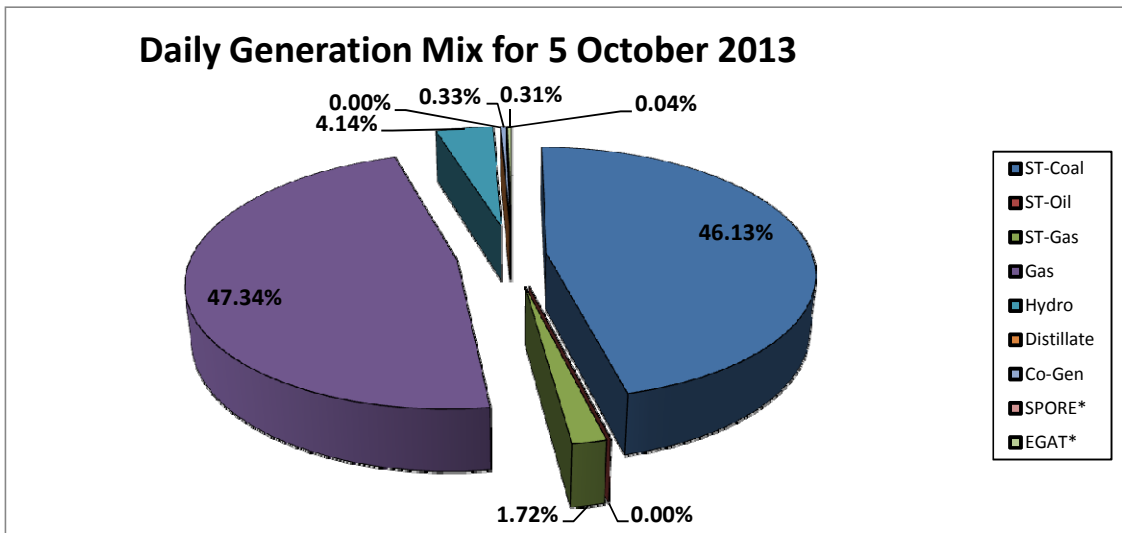
**Daily Owners' Mix for 5 October 2013**

TNB	52,405 MWh
IPP	249,687 MWh
Co-Gen	1,017 MWh
Interconnection*	1,053 MWh



**Daily Generation Mix for 5 October 2013**

ST-Coal	140,303 MWh
ST-Oil	- MWh
ST-Gas	5,217 MWh
Gas	143,977 MWh
Hydro	12,595 MWh
Distillate	- MWh
Co-Gen	1,017 MWh
SPORE*	112 MWh
EGAT*	941 MWh



\*Negative = energy is imported from Singapore and Thailand

Positive = energy is exported to Singapore and Thailand