

GRID SYSTEM OPERATION SUMMARY (PENINSULAR MALAYSIA)

	FORECAST	ACTUAL	VARIANCE	
Maximum Demand for 4 October 2013	15,263 MW	15,622 MW	2.35%	
Energy Demand for 4 October 2013	322.45 GWh	324.65 GWh	0.68%	
Highest Maximum Demand (13 May 2013)	16,298 MW	16,562 MW	1.62%	*New MD
Highest Daily Energy Demand (25 June 2013)	345.88 GWh	345.25 GWh	-0.18%	*New Energy

Prepared by:

Electricity Market Operations

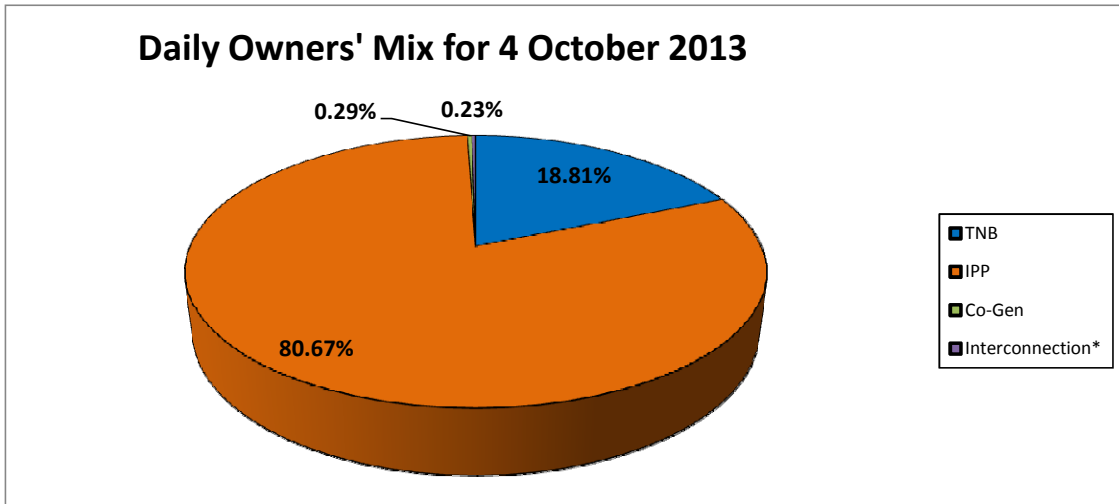
Electricity Supply & Market Regulations Dept.

Energy Commission Malaysia

05-Oct-13

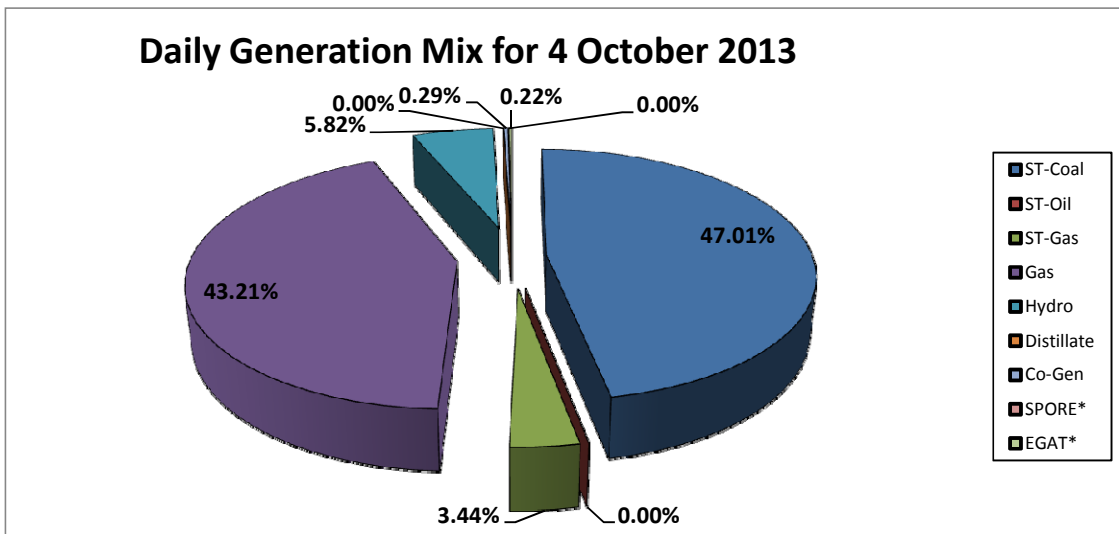
Daily Owners' Mix for 4 October 2013

TNB	61,316 MWh
IPP	262,934 MWh
Co-Gen	936 MWh
Interconnection*	742 MWh



Daily Generation Mix for 4 October 2013

ST-Coal	153,228 MWh
ST-Oil	- MWh
ST-Gas	11,225 MWh
Gas	140,843 MWh
Hydro	18,954 MWh
Distillate	- MWh
Co-Gen	936 MWh
SPORE*	11 MWh
EGAT*	731 MWh



*Negative = energy is imported from Singapore and Thailand
 Positive = energy is exported to Singapore and Thailand