

GRID SYSTEM OPERATION SUMMARY (PENINSULAR MALAYSIA)

	FORECAST	ACTUAL	VARIANCE	
Maximum Demand for 1 October 2013	15,870 MW	15,775 MW	-0.60%	
Energy Demand for 1 October 2013	333.81 GWh	330.52 GWh	-0.99%	
Highest Maximum Demand (13 May 2013)	16,298 MW	16,562 MW	1.62%	*New MD
Highest Daily Energy Demand (25 June 2013)	345.88 GWh	345.25 GWh	-0.18%	*New Energy

Prepared by:

Electricity Market Operations

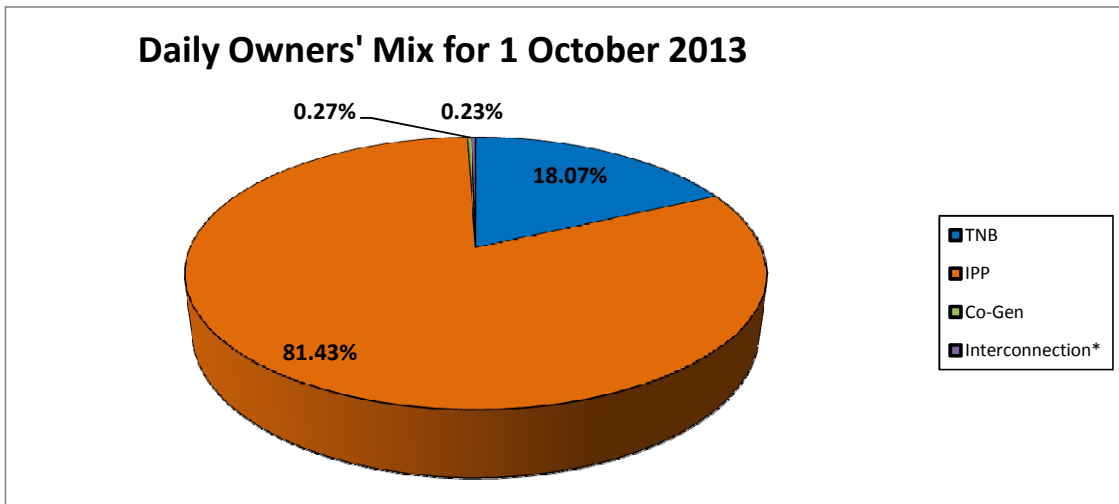
Electricity Supply & Market Regulations Dept.

Energy Commission Malaysia

02-Oct-13

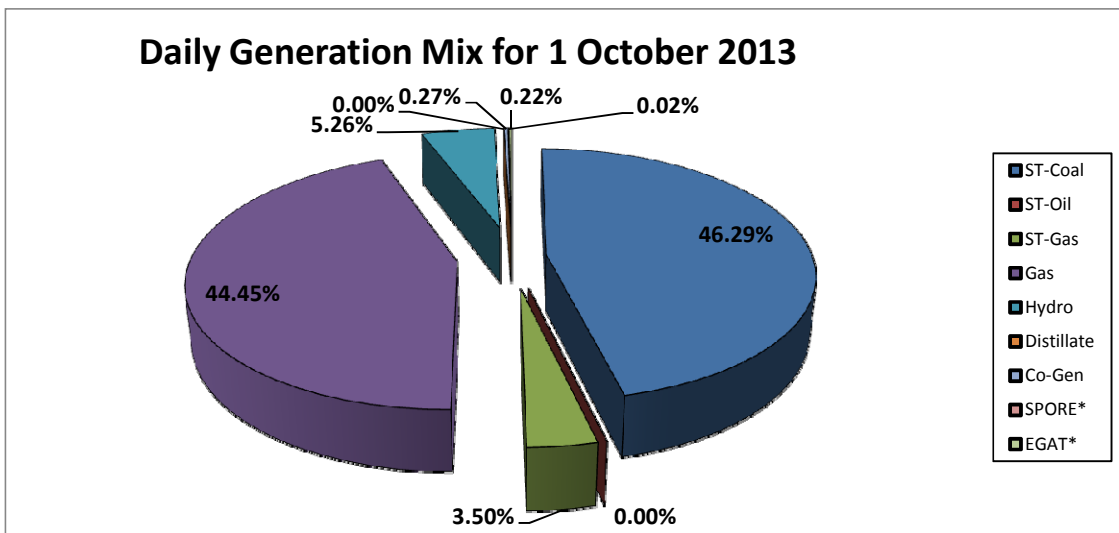
Daily Owners' Mix for 1 October 2013

TNB	60,021 MWh
IPP	270,390 MWh
Co-Gen	883 MWh
Interconnection*	773 MWh



Daily Generation Mix for 1 October 2013

ST-Coal	153,719 MWh
ST-Oil	- MWh
ST-Gas	11,635 MWh
Gas	147,590 MWh
Hydro	17,467 MWh
Distillate	- MWh
Co-Gen	883 MWh
SPORE*	54 MWh
EGAT*	719 MWh



*Negative = energy is imported from Singapore and Thailand
 Positive = energy is exported to Singapore and Thailand