

GRID SYSTEM OPERATION SUMMARY (PENINSULAR MALAYSIA)

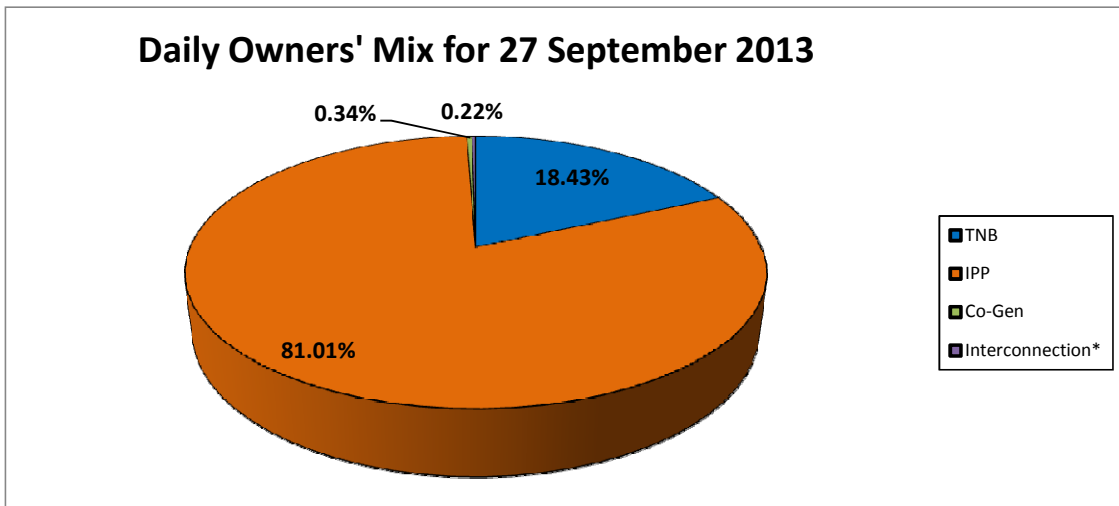
	FORECAST	ACTUAL	VARIANCE
Maximum Demand for 27 September 2013	15,230 MW	15,172 MW	-0.38%
Energy Demand for 27 September 2013	329.04 GWh	323.84 GWh	-1.58%
Highest Maximum Demand (13 May 2013)	16,298 MW	16,562 MW	1.62%
Highest Daily Energy Demand (25 June 2013)	345.88 GWh	345.25 GWh	-0.18%

*New MD
*New Energy

Prepared by:
Electricity Market Operations
Electricity Supply & Market Regulations Dept.
Energy Commission Malaysia
28-Sep-13

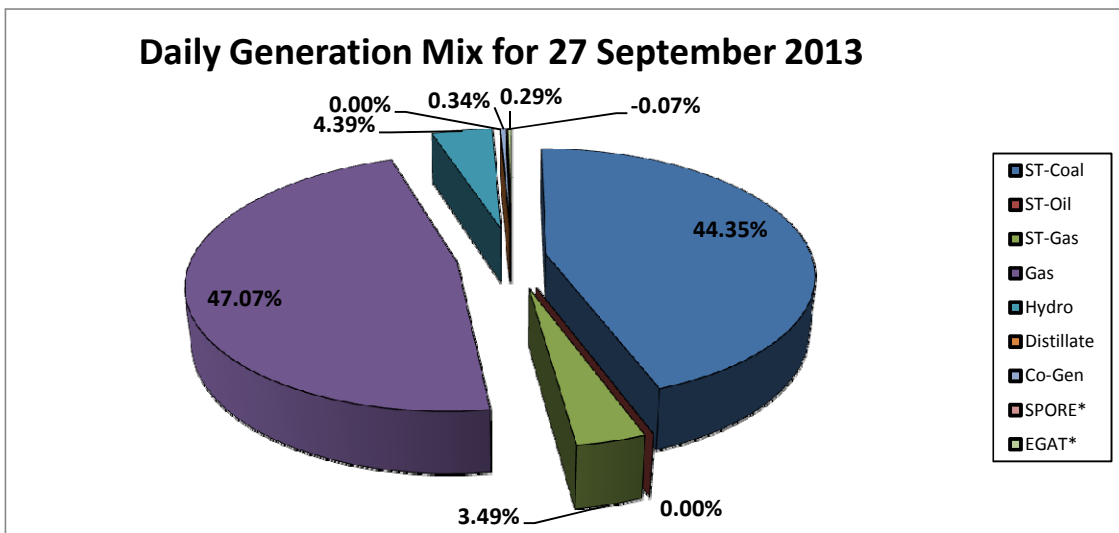
Daily Owners' Mix for 27 September 2013

TNB	59,955 MWh
IPP	263,485 MWh
Co-Gen	1,111 MWh
Interconnection*	711 MWh



Daily Generation Mix for 27 September 2013

ST-Coal	144,458 MWh
ST-Oil	- MWh
ST-Gas	11,377 MWh
Gas	153,308 MWh
Hydro	14,297 MWh
Distillate	- MWh
Co-Gen	1,111 MWh
SPORE*	(223) MWh
EGAT*	934 MWh



*Negative = energy is imported from Singapore and Thailand
 Positive = energy is exported to Singapore and Thailand