

GRID SYSTEM OPERATION SUMMARY (PENINSULAR MALAYSIA)

	FORECAST	ACTUAL	VARIANCE
Maximum Demand for 26 September 2013	15,940 MW	15,664 MW	-1.73%
Energy Demand for 26 September 2013	333.89 GWh	333.26 GWh	-0.19%
Highest Maximum Demand (13 May 2013)	16,298 MW	16,562 MW	1.62%
Highest Daily Energy Demand (25 June 2013)	345.88 GWh	345.25 GWh	-0.18%

*New MD
*New Energy

Prepared by:

Electricity Market Operations

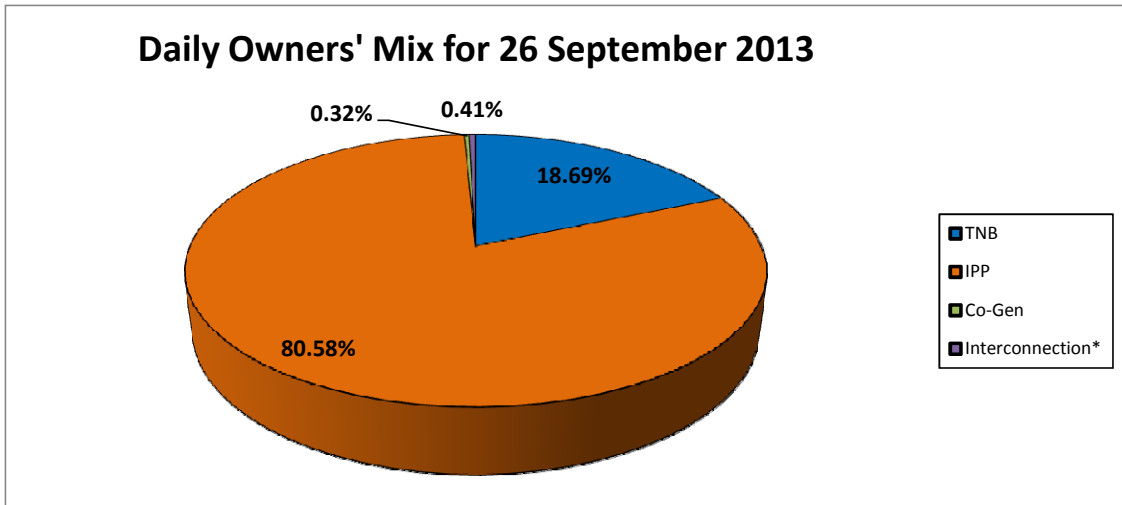
Electricity Supply & Market Regulations Dept.

Energy Commission Malaysia

27-Sep-13

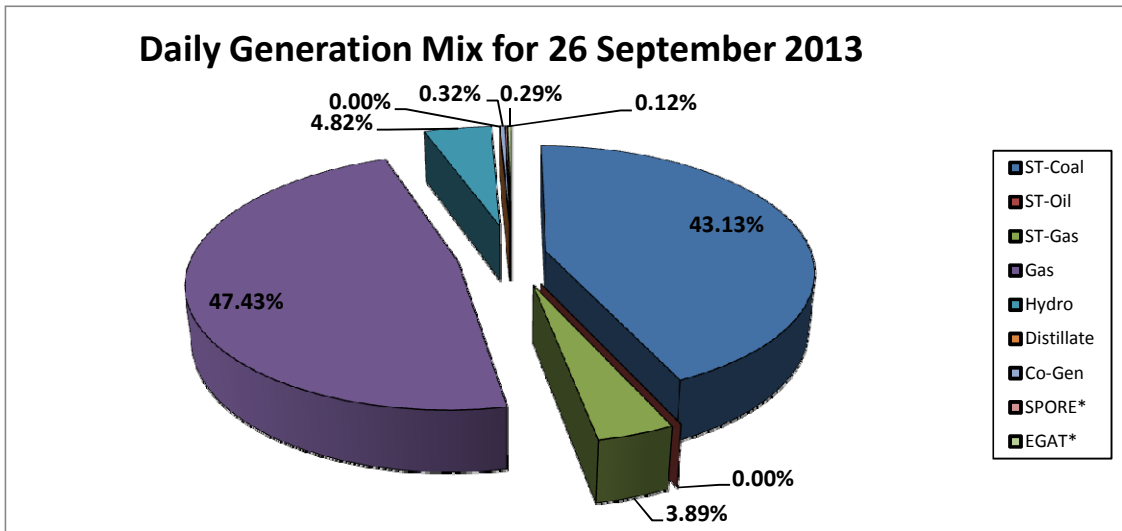
Daily Owners' Mix for 26 September 2013

TNB	62,813 MWh
IPP	270,752 MWh
Co-Gen	1,074 MWh
Interconnection*	1,377 MWh



Daily Generation Mix for 26 September 2013

ST-Coal	144,919 MWh
ST-Oil	- MWh
ST-Gas	13,073 MWh
Gas	159,383 MWh
Hydro	16,190 MWh
Distillate	- MWh
Co-Gen	1,074 MWh
SPORE*	407 MWh
EGAT*	970 MWh



*Negative = energy is imported from Singapore and Thailand
 Positive = energy is exported to Singapore and Thailand