

GRID SYSTEM OPERATION SUMMARY (PENINSULAR MALAYSIA)

	FORECAST	ACTUAL	VARIANCE	
Maximum Demand for 25 September 2013	15,916 MW	16,010 MW	0.59%	
Energy Demand for 25 September 2013	334.66 GWh	336.01 GWh	0.40%	
Highest Maximum Demand (13 May 2013)	16,298 MW	16,562 MW	1.62%	*New MD
Highest Daily Energy Demand (25 June 2013)	345.88 GWh	345.25 GWh	-0.18%	*New Energy

Prepared by:

Electricity Market Operations

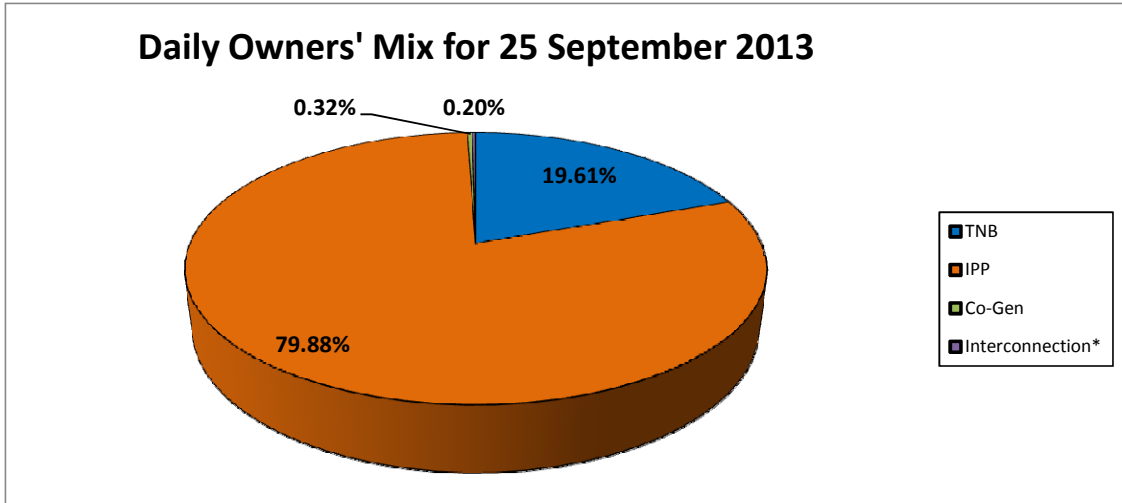
Electricity Supply & Market Regulations Dept.

Energy Commission Malaysia

26-Sep-13

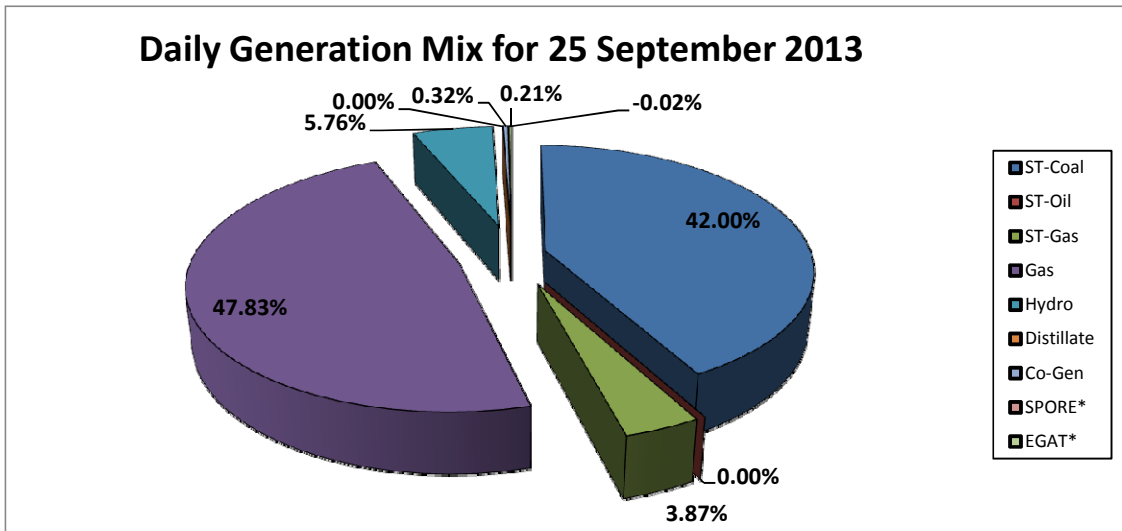
Daily Owners' Mix for 25 September 2013

TNB	66,149 MWh
IPP	269,463 MWh
Co-Gen	1,066 MWh
Interconnection*	666 MWh



Daily Generation Mix for 25 September 2013

ST-Coal	141,743 MWh
ST-Oil	- MWh
ST-Gas	13,045 MWh
Gas	161,401 MWh
Hydro	19,425 MWh
Distillate	- MWh
Co-Gen	1,066 MWh
SPORE*	(57) MWh
EGAT*	723 MWh



*Negative = energy is imported from Singapore and Thailand
 Positive = energy is exported to Singapore and Thailand