

GRID SYSTEM OPERATION SUMMARY (PENINSULAR MALAYSIA)

	FORECAST	ACTUAL	VARIANCE	
Maximum Demand for 24 September 2013	15,858 MW	16,144 MW	1.80%	
Energy Demand for 24 September 2013	333.56 GWh	336.31 GWh	0.82%	
Highest Maximum Demand (13 May 2013)	16,298 MW	16,562 MW	1.62%	*New MD
Highest Daily Energy Demand (25 June 2013)	345.88 GWh	345.25 GWh	-0.18%	*New Energy

Prepared by:

Electricity Market Operations

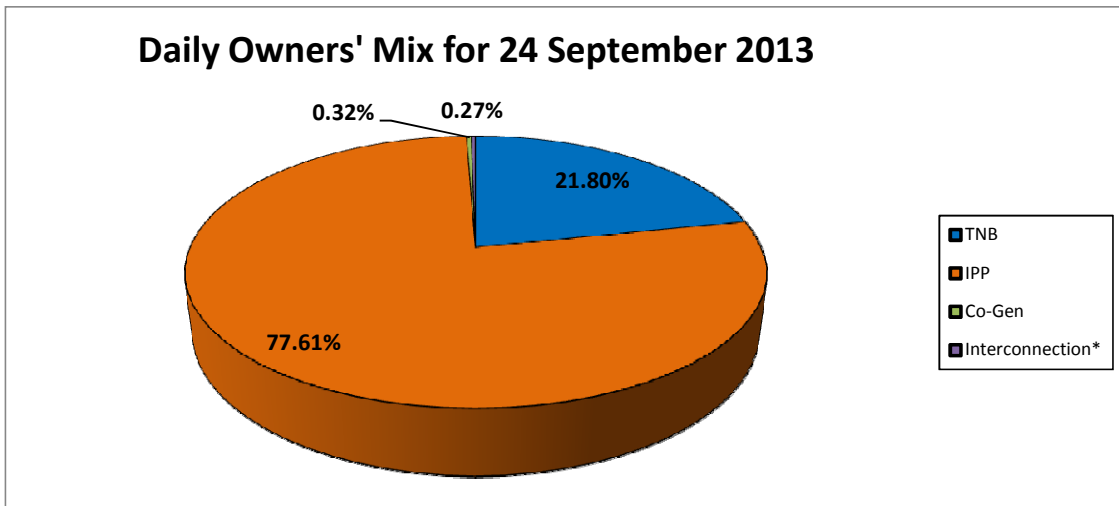
Electricity Supply & Market Regulations Dept.

Energy Commission Malaysia

25-Sep-13

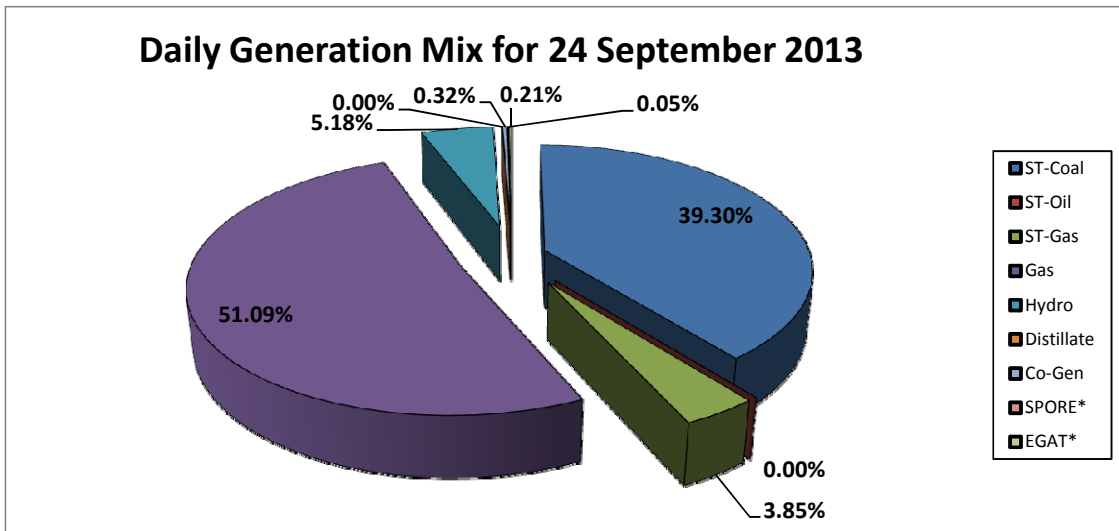
Daily Owners' Mix for 24 September 2013

TNB	73,718 MWh
IPP	262,432 MWh
Co-Gen	1,070 MWh
Interconnection*	908 MWh



Daily Generation Mix for 24 September 2013

ST-Coal	132,898 MWh
ST-Oil	- MWh
ST-Gas	13,007 MWh
Gas	172,735 MWh
Hydro	17,510 MWh
Distillate	- MWh
Co-Gen	1,070 MWh
SPORE*	184 MWh
EGAT*	724 MWh



*Negative = energy is imported from Singapore and Thailand
 Positive = energy is exported to Singapore and Thailand