

GRID SYSTEM OPERATION SUMMARY (PENINSULAR MALAYSIA)

	FORECAST	ACTUAL	VARIANCE	
Maximum Demand for 21 September 2013	13,717 MW	14,164 MW	3.26%	
Energy Demand for 21 September 2013	303.45 GWh	308.32 GWh	1.60%	
Highest Maximum Demand (13 May 2013)	16,298 MW	16,562 MW	1.62%	*New MD
Highest Daily Energy Demand (25 June 2013)	345.88 GWh	345.25 GWh	-0.18%	*New Energy

Prepared by:

Electricity Market Operations

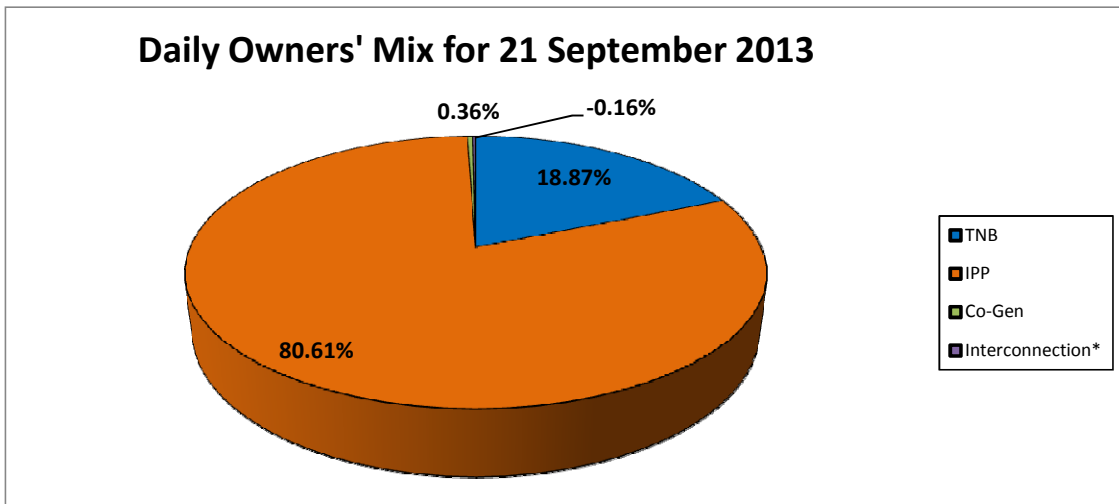
Electricity Supply & Market Regulations Dept.

Energy Commission Malaysia

22-Sep-13

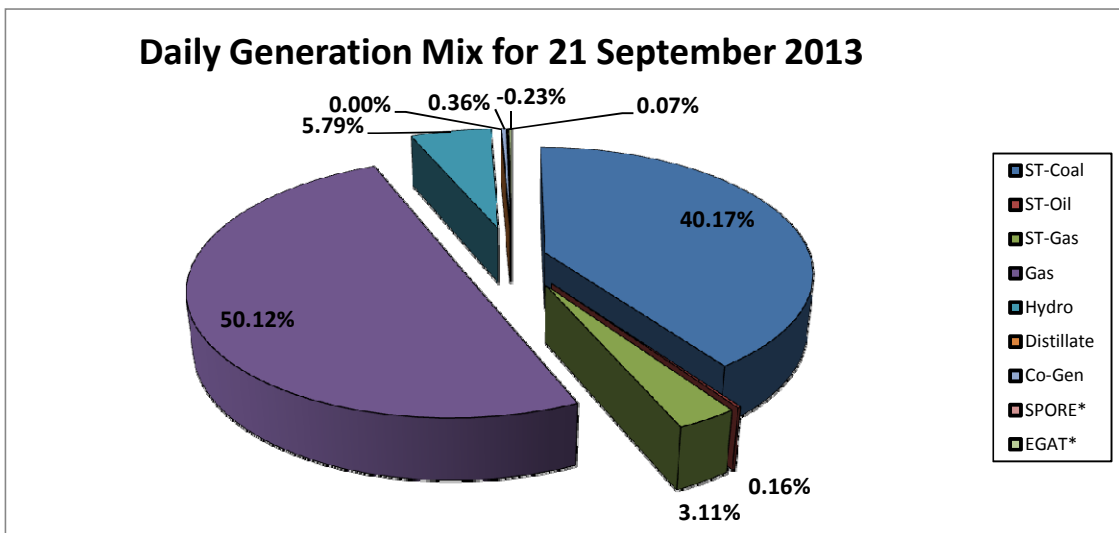
Daily Owners' Mix for 21 September 2013

TNB	58,174 MWh
IPP	248,547 MWh
Co-Gen	1,106 MWh
Interconnection*	(494) MWh



Daily Generation Mix for 21 September 2013

ST-Coal	124,004 MWh
ST-Oil	500 MWh
ST-Gas	9,615 MWh
Gas	154,722 MWh
Hydro	17,880 MWh
Distillate	- MWh
Co-Gen	1,106 MWh
SPORE*	201 MWh
EGAT*	(695) MWh



*Negative = energy is imported from Singapore and Thailand
 Positive = energy is exported to Singapore and Thailand