

GRID SYSTEM OPERATION SUMMARY (PENINSULAR MALAYSIA)

	FORECAST	ACTUAL	VARIANCE	
Maximum Demand for 20 September 2013	15,286 MW	15,355 MW	0.45%	
Energy Demand for 20 September 2013	322.84 GWh	324.06 GWh	0.38%	
Highest Maximum Demand (13 May 2013)	16,298 MW	16,562 MW	1.62%	*New MD
Highest Daily Energy Demand (25 June 2013)	345.88 GWh	345.25 GWh	-0.18%	*New Energy

Prepared by:

Electricity Market Operations

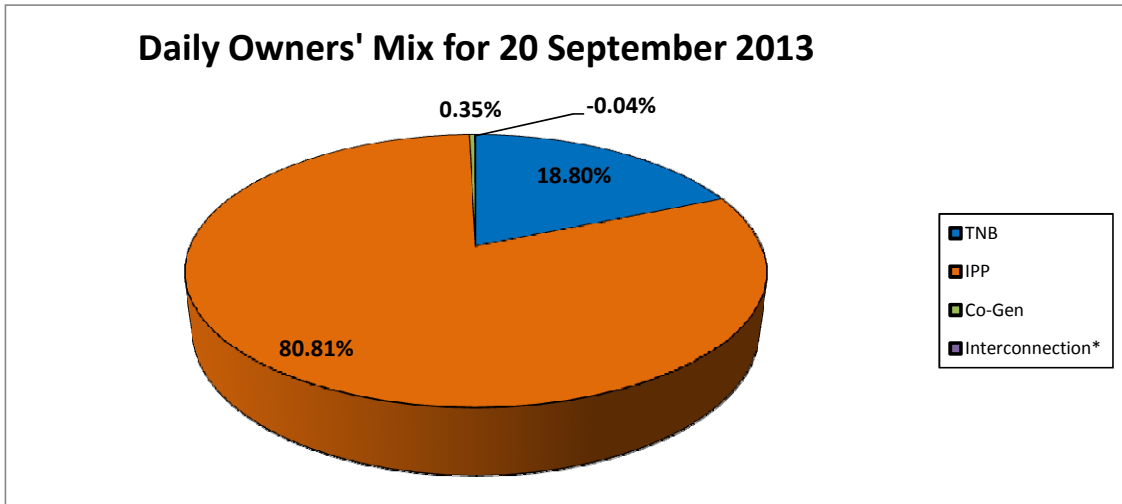
Electricity Supply & Market Regulations Dept.

Energy Commission Malaysia

21-Sep-13

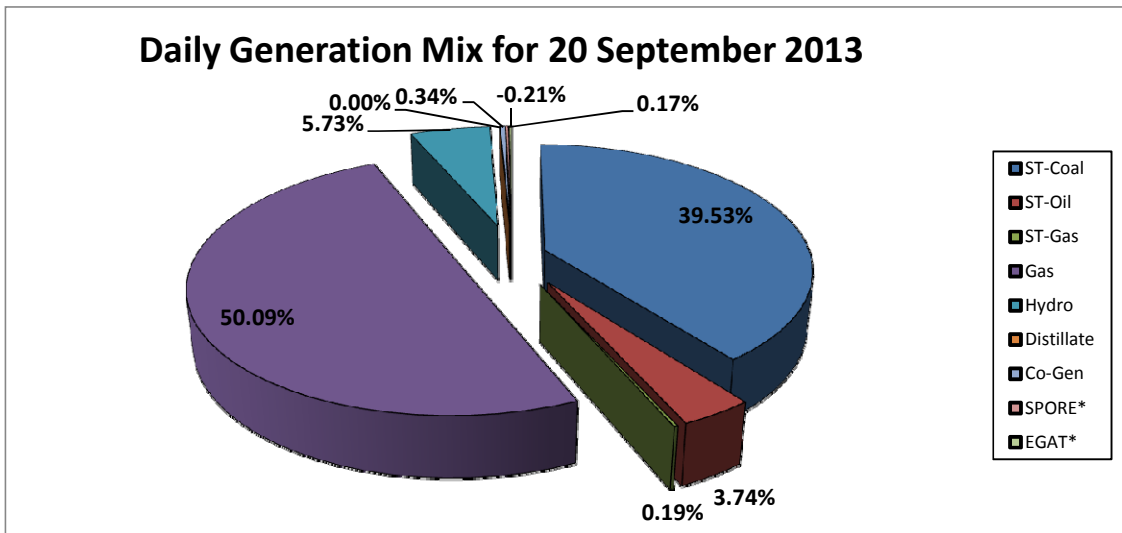
Daily Owners' Mix for 20 September 2013

TNB	59,037	MWh
IPP	253,793	MWh
Co-Gen	1,095	MWh
Interconnection*	(133)	MWh



Daily Generation Mix for 20 September 2013

ST-Coal	128,538	MWh
ST-Oil	12,151	MWh
ST-Gas	611	MWh
Gas	162,894	MWh
Hydro	18,636	MWh
Distillate	-	MWh
Co-Gen	1,095	MWh
SPORE*	564	MWh
EGAT*	(697)	MWh



*Negative = energy is imported from Singapore and Thailand

Positive = energy is exported to Singapore and Thailand