

GRID SYSTEM OPERATION SUMMARY (PENINSULAR MALAYSIA)

	FORECAST	ACTUAL	VARIANCE
Maximum Demand for 19 September 2013	15,653 MW	15,760 MW	0.68%
Energy Demand for 19 September 2013	327.93 GWh	328.00 GWh	0.02%
Highest Maximum Demand (13 May 2013)	16,298 MW	16,562 MW	1.62% *New MD
Highest Daily Energy Demand (25 June 2013)	345.88 GWh	345.25 GWh	-0.18% *New Energy

Prepared by:

Electricity Market Operations

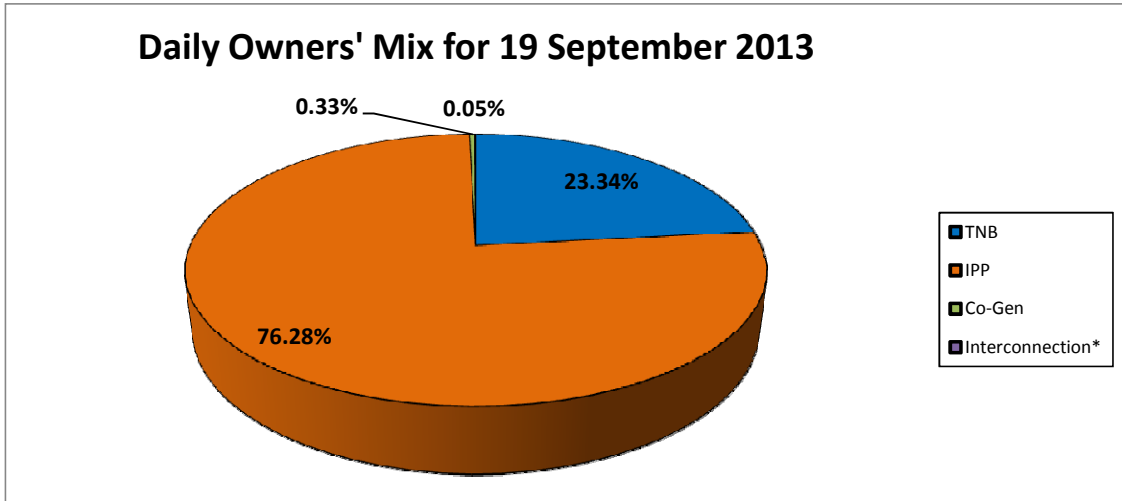
Electricity Supply & Market Regulations Dept.

Energy Commission Malaysia

20-Sep-13

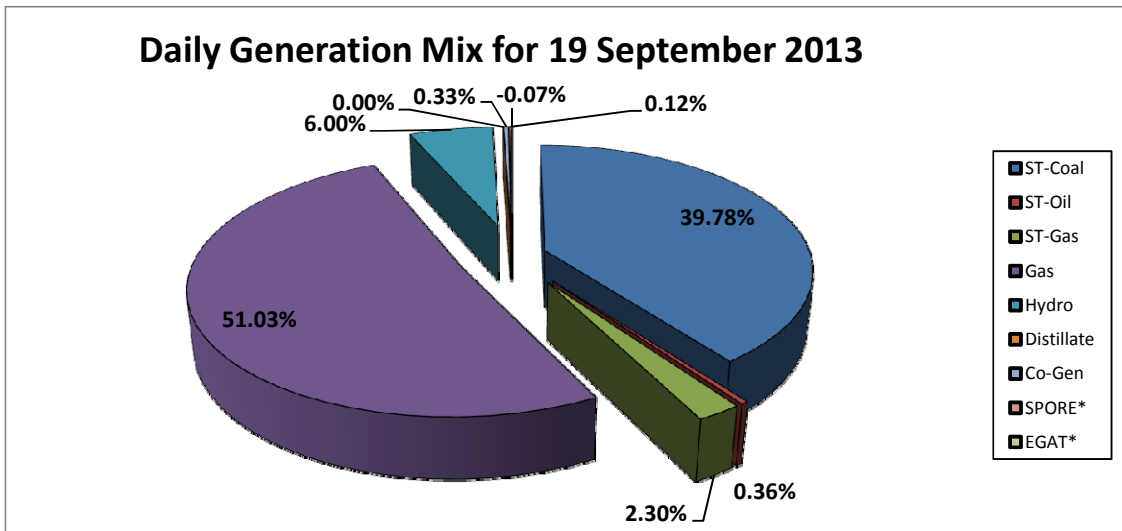
Daily Owners' Mix for 19 September 2013

TNB	76,635 MWh
IPP	250,449 MWh
Co-Gen	1,092 MWh
Interconnection*	172 MWh



Daily Generation Mix for 19 September 2013

ST-Coal	130,797 MWh
ST-Oil	1,199 MWh
ST-Gas	7,558 MWh
Gas	167,786 MWh
Hydro	19,744 MWh
Distillate	- MWh
Co-Gen	1,092 MWh
SPORE*	408 MWh
EGAT*	(236) MWh



*Negative = energy is imported from Singapore and Thailand
 Positive = energy is exported to Singapore and Thailand