

GRID SYSTEM OPERATION SUMMARY (PENINSULAR MALAYSIA)

	FORECAST	ACTUAL	VARIANCE	
Maximum Demand for 17 September 2013	15,025 MW	15,361 MW	2.24%	
Energy Demand for 17 September 2013	308.96 GWh	313.17 GWh	1.36%	
Highest Maximum Demand (13 May 2013)	16,298 MW	16,562 MW	1.62%	*New MD
Highest Daily Energy Demand (25 June 2013)	345.88 GWh	345.25 GWh	-0.18%	*New Energy

Prepared by:

Electricity Market Operations

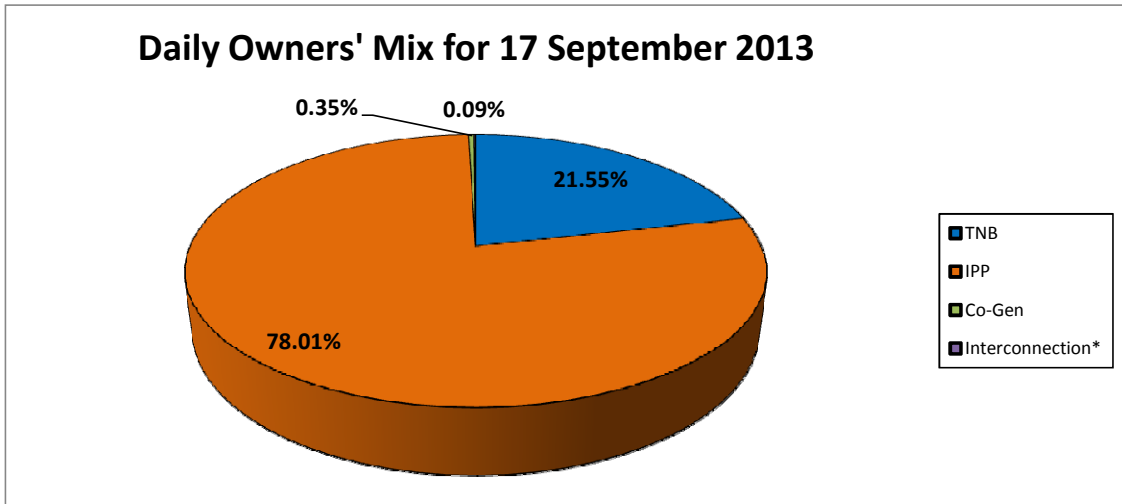
Electricity Supply & Market Regulations Dept.

Energy Commission Malaysia

18-Sep-13

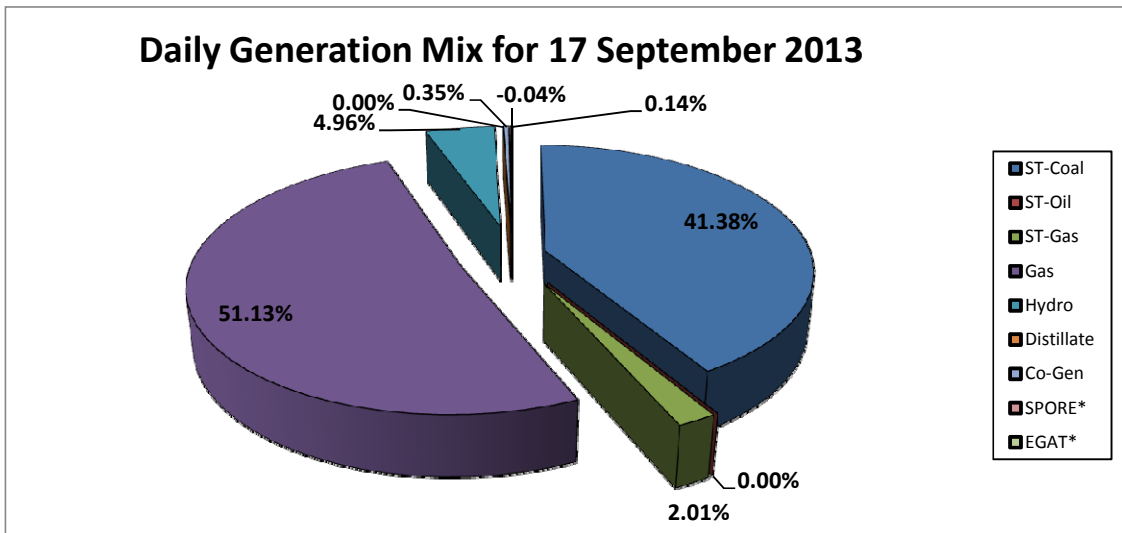
Daily Owners' Mix for 17 September 2013

TNB	67,609	MWh
IPP	244,740	MWh
Co-Gen	1,101	MWh
Interconnection*	284	MWh



Daily Generation Mix for 17 September 2013

ST-Coal	129,935	MWh
ST-Oil	-	MWh
ST-Gas	6,307	MWh
Gas	160,545	MWh
Hydro	15,562	MWh
Distillate	-	MWh
Co-Gen	1,101	MWh
SPORE*	424	MWh
EGAT*	(140)	MWh



*Negative = energy is imported from Singapore and Thailand

Positive = energy is exported to Singapore and Thailand