

GRID SYSTEM OPERATION SUMMARY (PENINSULAR MALAYSIA)

	FORECAST	ACTUAL	VARIANCE	
Maximum Demand for 12 September 2013	14,922 MW	15,291 MW	2.47%	
Energy Demand for 12 September 2013	314.59 GWh	306.41 GWh	-2.60%	
Highest Maximum Demand (13 May 2013)	16,298 MW	16,562 MW	1.62%	*New MD
Highest Daily Energy Demand (25 June 2013)	345.88 GWh	345.25 GWh	-0.18%	*New Energy

Prepared by:

Electricity Market Operations

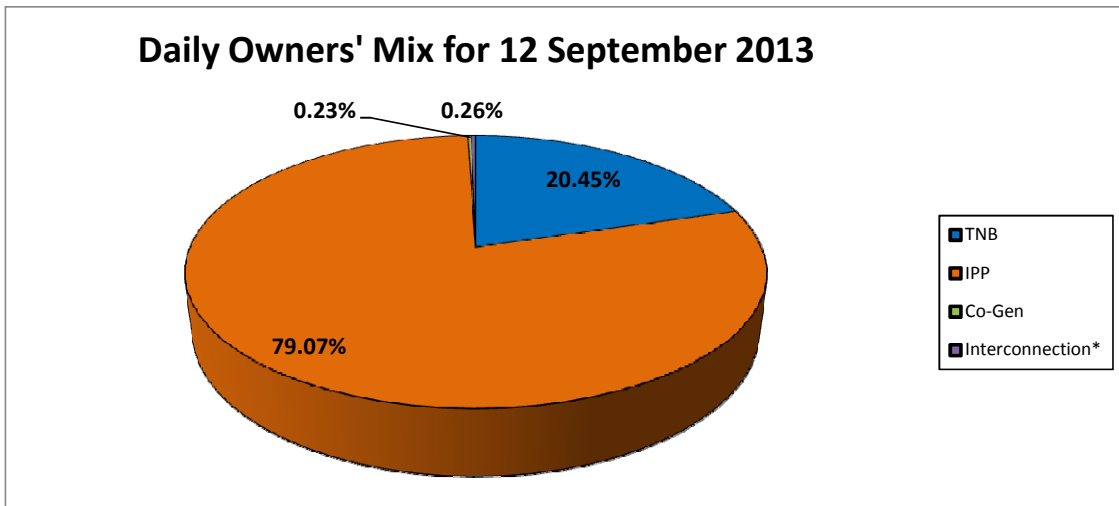
Electricity Supply & Market Regulations Dept.

Energy Commission Malaysia

13-Sep-13

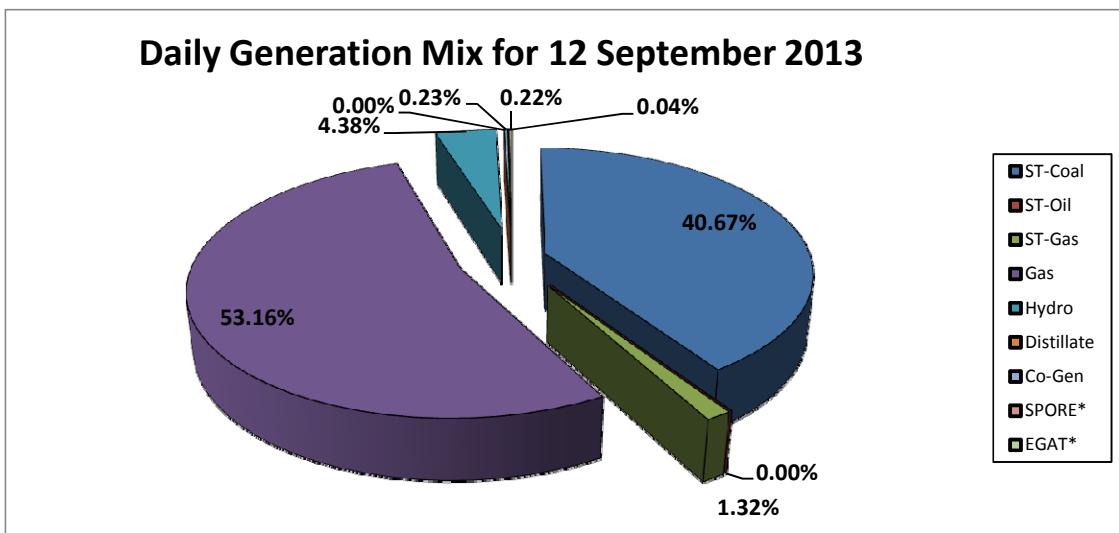
Daily Owners' Mix for 12 September 2013

TNB	65,729 MWh
IPP	254,213 MWh
Co-Gen	726 MWh
Interconnection*	820 MWh



Daily Generation Mix for 12 September 2013

ST-Coal	130,736 MWh
ST-Oil	- MWh
ST-Gas	4,245 MWh
Gas	170,887 MWh
Hydro	14,074 MWh
Distillate	- MWh
Co-Gen	726 MWh
SPORE*	118 MWh
EGAT*	702 MWh



*Negative = energy is imported from Singapore and Thailand
 Positive = energy is exported to Singapore and Thailand