

**GRID SYSTEM OPERATION SUMMARY (PENINSULAR MALAYSIA)**

	<b>FORECAST</b>	<b>ACTUAL</b>	<b>VARIANCE</b>	
<b>Maximum Demand for 11 September 2013</b>	14,578 MW	14,929 MW	2.41%	
<b>Energy Demand for 11 September 2013</b>	304.18 GWh	310.03 GWh	1.92%	
<b>Highest Maximum Demand (13 May 2013)</b>	16,298 MW	16,562 MW	1.62%	<b>*New MD</b>
<b>Highest Daily Energy Demand (25 June 2013)</b>	345.88 GWh	345.25 GWh	-0.18%	<b>*New Energy</b>

Prepared by:

Electricity Market Operations

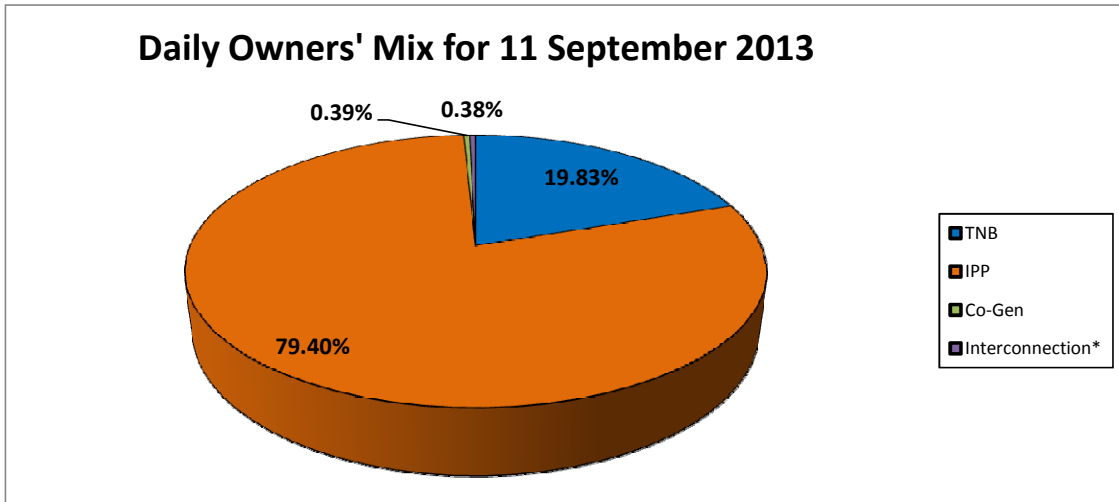
Electricity Supply & Market Regulations Dept.

Energy Commission Malaysia

12-Sep-13

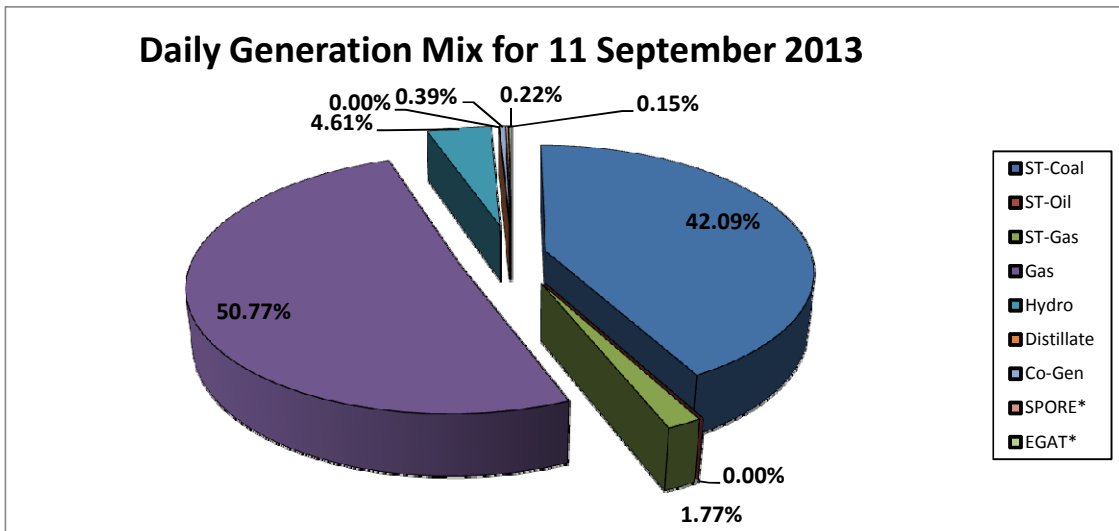
**Daily Owners' Mix for 11 September 2013**

TNB	61,952 MWh
IPP	248,054 MWh
Co-Gen	1,224 MWh
Interconnection*	1,172 MWh



**Daily Generation Mix for 11 September 2013**

ST-Coal	131,485 MWh
ST-Oil	- MWh
ST-Gas	5,514 MWh
Gas	158,596 MWh
Hydro	14,411 MWh
Distillate	- MWh
Co-Gen	1,224 MWh
SPORE*	476 MWh
EGAT*	696 MWh



\*Negative = energy is imported from Singapore and Thailand  
 Positive = energy is exported to Singapore and Thailand