

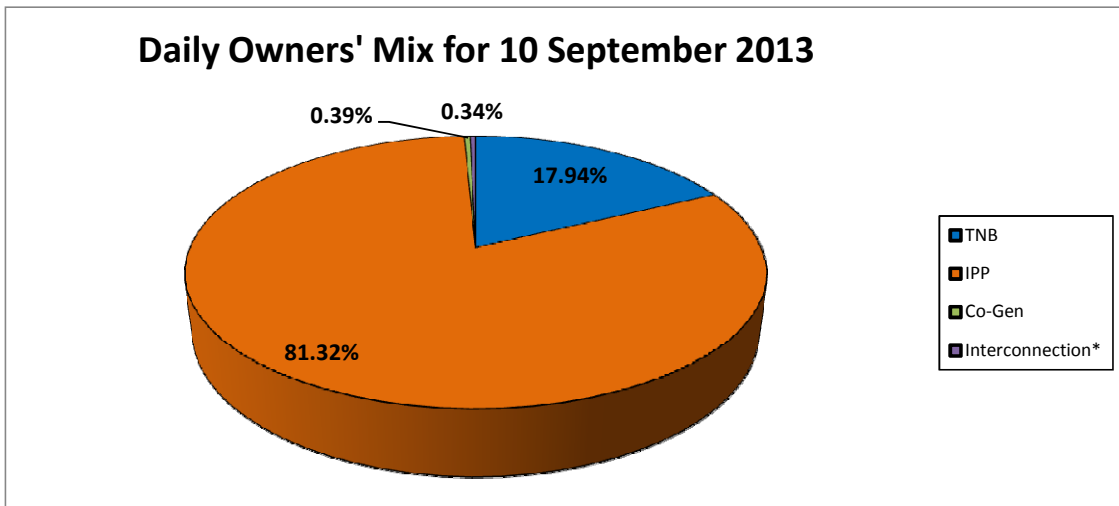
GRID SYSTEM OPERATION SUMMARY (PENINSULAR MALAYSIA)

	FORECAST	ACTUAL	VARIANCE	
Maximum Demand for 10 September 2013	14,699 MW	14,196 MW	-3.42%	
Energy Demand for 10 September 2013	308.59 GWh	301.83 GWh	-2.19%	
Highest Maximum Demand (13 May 2013)	16,298 MW	16,562 MW	1.62%	*New MD
Highest Daily Energy Demand (25 June 2013)	345.88 GWh	345.25 GWh	-0.18%	*New Energy

Prepared by:
Electricity Market Operations
Electricity Supply & Market Regulations Dept.
Energy Commission Malaysia
11-Sep-13

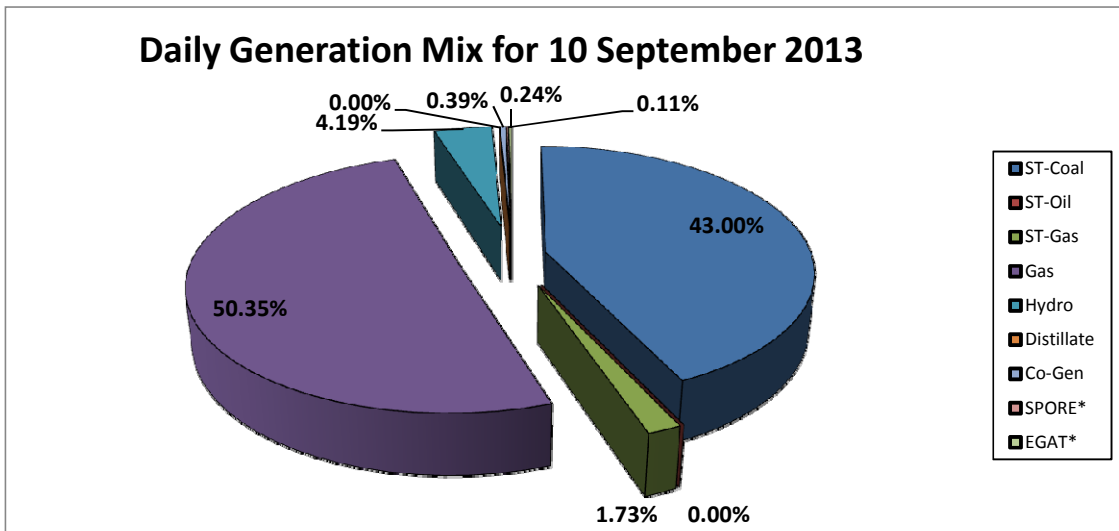
Daily Owners' Mix for 10 September 2013

TNB	54,516 MWh
IPP	247,155 MWh
Co-Gen	1,198 MWh
Interconnection*	1,044 MWh



Daily Generation Mix for 10 September 2013

ST-Coal	130,690 MWh
ST-Oil	- MWh
ST-Gas	5,252 MWh
Gas	153,010 MWh
Hydro	12,719 MWh
Distillate	- MWh
Co-Gen	1,198 MWh
SPORE*	321 MWh
EGAT*	723 MWh



*Negative = energy is imported from Singapore and Thailand
 Positive = energy is exported to Singapore and Thailand