

GRID SYSTEM OPERATION SUMMARY (PENINSULAR MALAYSIA)

	FORECAST	ACTUAL	VARIANCE	
Maximum Demand for 9 September 2013	14,953 MW	14,765 MW	-1.26%	
Energy Demand for 9 September 2013	309.81 GWh	304.65 GWh	-1.67%	
Highest Maximum Demand (13 May 2013)	16,298 MW	16,562 MW	1.62%	*New MD
Highest Daily Energy Demand (25 June 2013)	345.88 GWh	345.25 GWh	-0.18%	*New Energy

Prepared by:

Electricity Market Operations

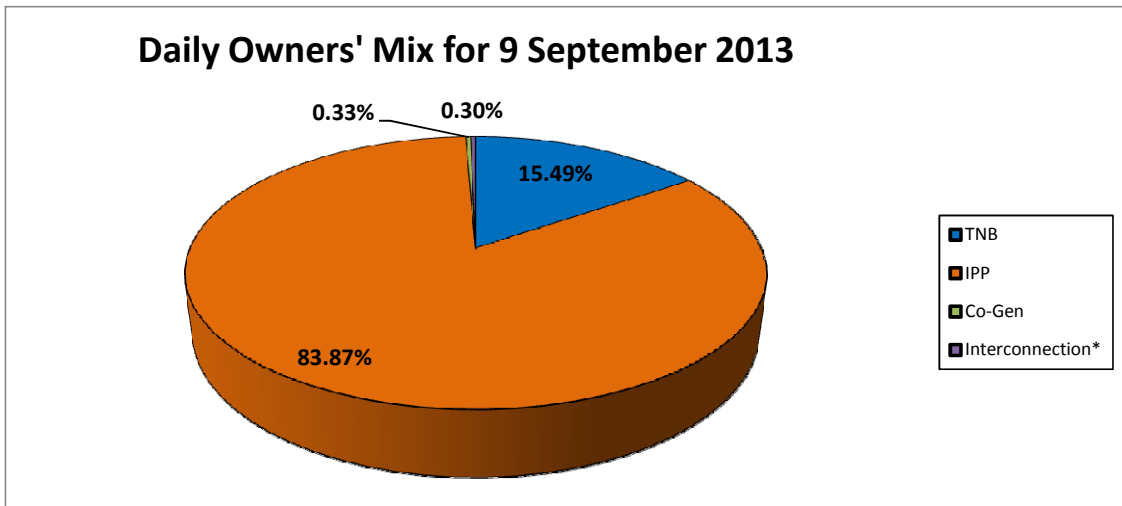
Electricity Supply & Market Regulations Dept.

Energy Commission Malaysia

10-Sep-13

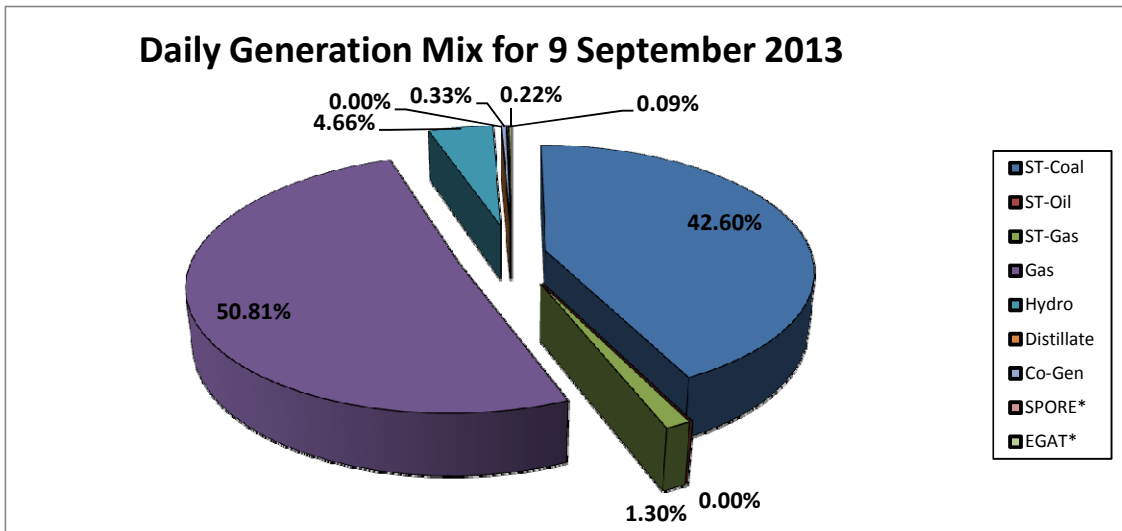
Daily Owners' Mix for 9 September 2013

TNB	47,490 MWh
IPP	257,071 MWh
Co-Gen	1,024 MWh
Interconnection*	930 MWh



Daily Generation Mix for 9 September 2013

ST-Coal	130,573 MWh
ST-Oil	- MWh
ST-Gas	3,984 MWh
Gas	155,732 MWh
Hydro	14,272 MWh
Distillate	- MWh
Co-Gen	1,024 MWh
SPORE*	264 MWh
EGAT*	666 MWh



*Negative = energy is imported from Singapore and Thailand
 Positive = energy is exported to Singapore and Thailand