

**GRID SYSTEM OPERATION SUMMARY (PENINSULAR MALAYSIA)**

	<b>FORECAST</b>	<b>ACTUAL</b>	<b>VARIANCE</b>	
<b>Maximum Demand for 7 September 2013</b>	13,763 MW	13,378 MW	-2.80%	
<b>Energy Demand for 7 September 2013</b>	298.16 GWh	290.10 GWh	-2.70%	
<b>Highest Maximum Demand (13 May 2013)</b>	16,298 MW	16,562 MW	1.62%	<b>*New MD</b>
<b>Highest Daily Energy Demand (25 June 2013)</b>	345.88 GWh	345.25 GWh	-0.18%	<b>*New Energy</b>

Prepared by:

Electricity Market Operations

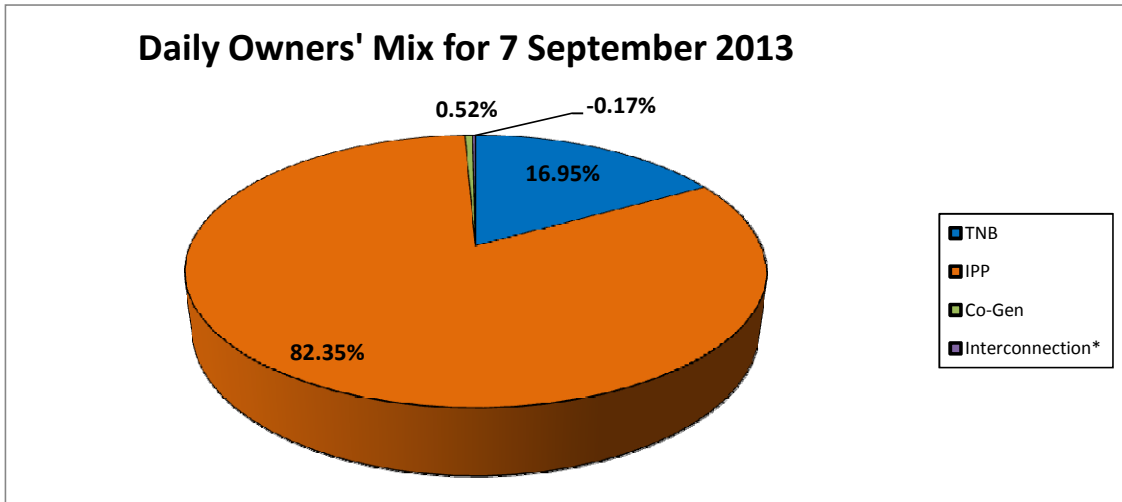
Electricity Supply & Market Regulations Dept.

Energy Commission Malaysia

08-Sep-13

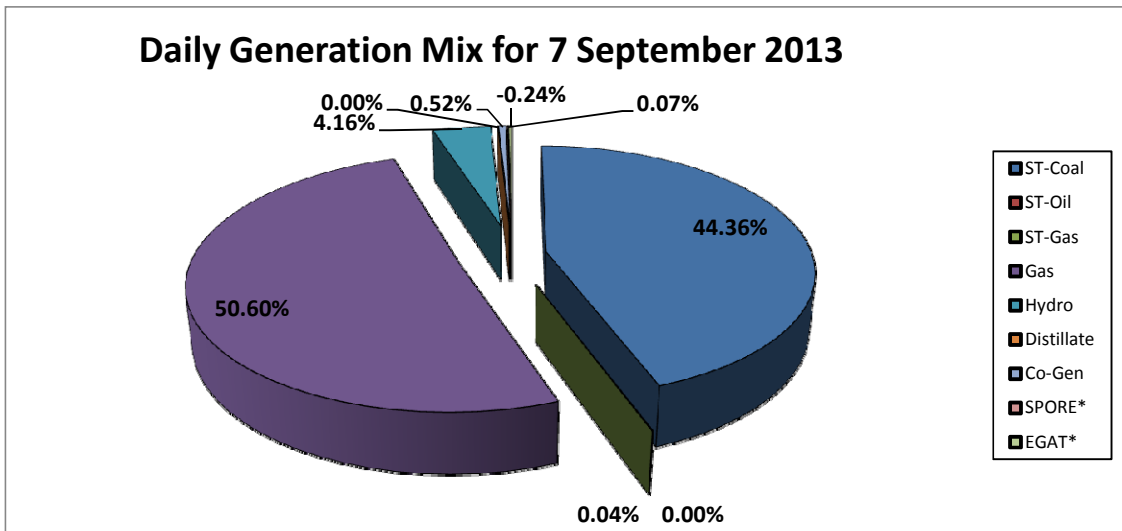
**Daily Owners' Mix for 7 September 2013**

TNB	49,191 MWh
IPP	238,980 MWh
Co-Gen	1,521 MWh
Interconnection*	(505) MWh



**Daily Generation Mix for 7 September 2013**

ST-Coal	128,916 MWh
ST-Oil	- MWh
ST-Gas	122 MWh
Gas	147,044 MWh
Hydro	12,089 MWh
Distillate	- MWh
Co-Gen	1,521 MWh
SPORE*	194 MWh
EGAT*	(699) MWh



\*Negative = energy is imported from Singapore and Thailand  
 Positive = energy is exported to Singapore and Thailand