

GRID SYSTEM OPERATION SUMMARY (PENINSULAR MALAYSIA)

	FORECAST	ACTUAL	VARIANCE
Maximum Demand for 6 September 2013	14,972 MW	14,671 MW	-2.01%
Energy Demand for 6 September 2013	314.45 GWh	309.82 GWh	-1.47%
Highest Maximum Demand (13 May 2013)	16,298 MW	16,562 MW	1.62%
Highest Daily Energy Demand (25 June 2013)	345.88 GWh	345.25 GWh	-0.18%

*New MD
*New Energy

Prepared by:

Electricity Market Operations

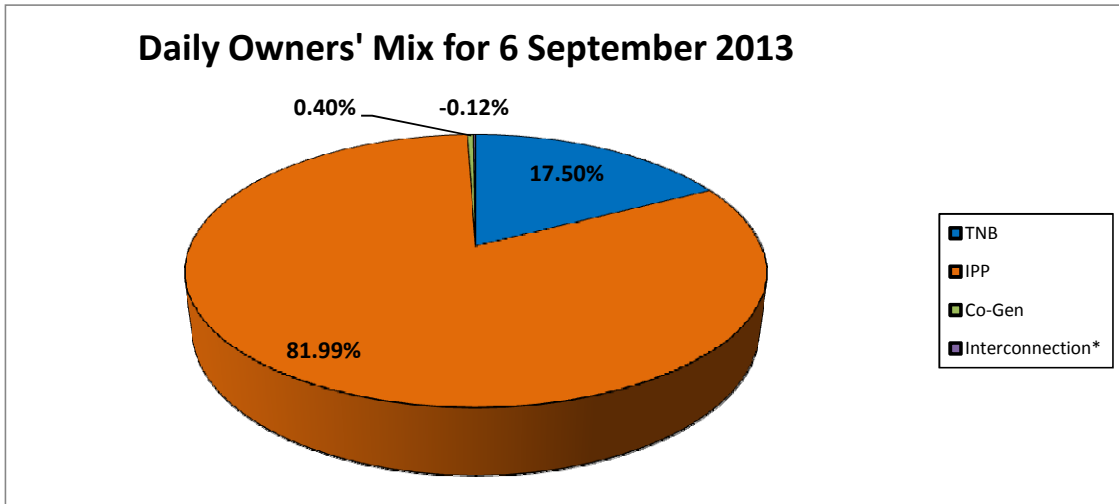
Electricity Supply & Market Regulations Dept.

Energy Commission Malaysia

07-Sep-13

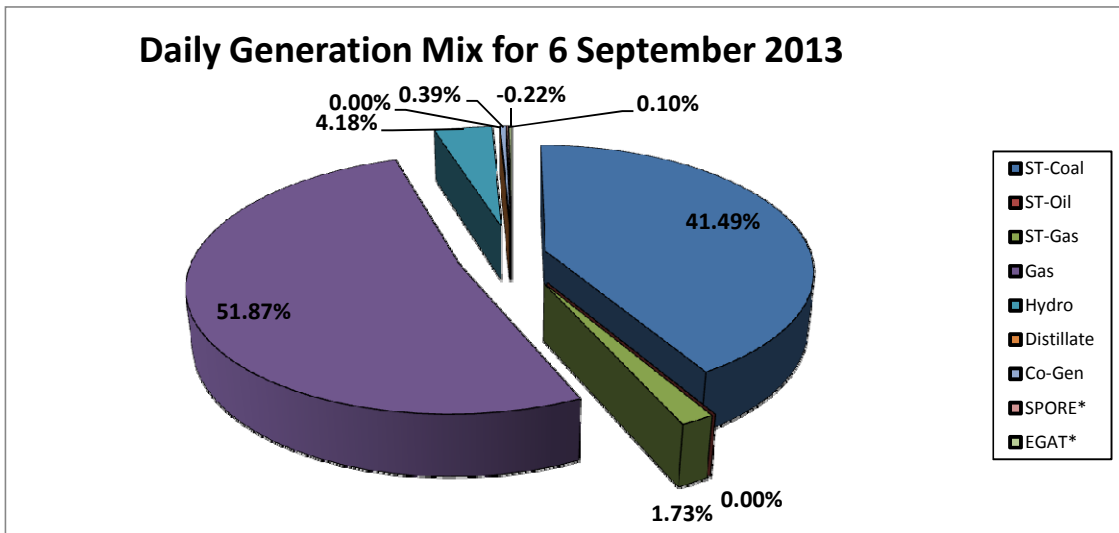
Daily Owners' Mix for 6 September 2013

TNB	54,116 MWh
IPP	253,573 MWh
Co-Gen	1,224 MWh
Interconnection*	(373) MWh



Daily Generation Mix for 6 September 2013

ST-Coal	128,590 MWh
ST-Oil	- MWh
ST-Gas	5,377 MWh
Gas	160,764 MWh
Hydro	12,958 MWh
Distillate	- MWh
Co-Gen	1,224 MWh
SPORE*	322 MWh
EGAT*	(695) MWh



*Negative = energy is imported from Singapore and Thailand
 Positive = energy is exported to Singapore and Thailand