

GRID SYSTEM OPERATION SUMMARY (PENINSULAR MALAYSIA)

	FORECAST	ACTUAL	VARIANCE	
Maximum Demand for 4 September 2013	15,146 MW	15,165 MW	0.13%	
Energy Demand for 4 September 2013	316.10 GWh	315.86 GWh	-0.08%	
Highest Maximum Demand (13 May 2013)	16,298 MW	16,562 MW	1.62%	*New MD
Highest Daily Energy Demand (25 June 2013)	345.88 GWh	345.25 GWh	-0.18%	*New Energy

Prepared by:

Electricity Market Operations

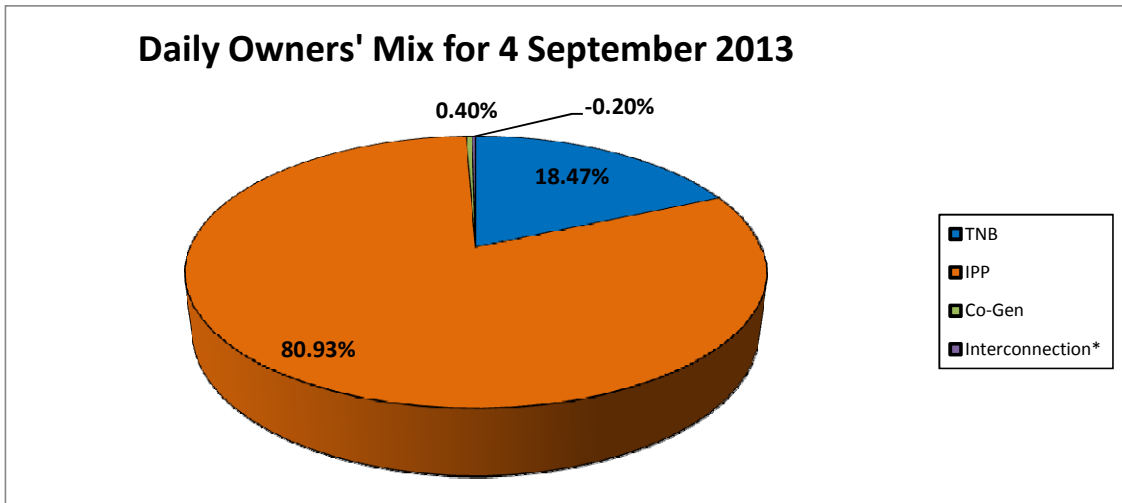
Electricity Supply & Market Regulations Dept.

Energy Commission Malaysia

05-Sep-13

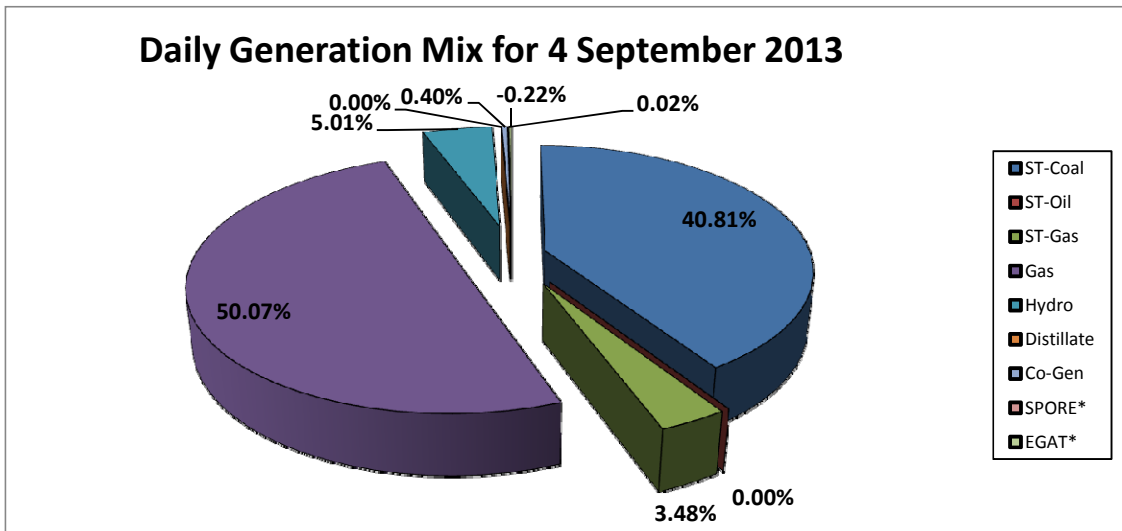
Daily Owners' Mix for 4 September 2013

TNB	58,199 MWh
IPP	255,051 MWh
Co-Gen	1,261 MWh
Interconnection*	(640) MWh



Daily Generation Mix for 4 September 2013

ST-Coal	128,655 MWh
ST-Oil	- MWh
ST-Gas	10,959 MWh
Gas	157,845 MWh
Hydro	15,791 MWh
Distillate	- MWh
Co-Gen	1,261 MWh
SPORE*	58 MWh
EGAT*	(698) MWh



*Negative = energy is imported from Singapore and Thailand
 Positive = energy is exported to Singapore and Thailand