

**GRID SYSTEM OPERATION SUMMARY (PENINSULAR MALAYSIA)**

	<b>FORECAST</b>	<b>ACTUAL</b>	<b>VARIANCE</b>	
<b>Maximum Demand for 3 September 2013</b>	14,998 MW	15,077 MW	0.53%	
<b>Energy Demand for 3 September 2013</b>	238.70 GWh	315.73 GWh	32.27%	
<b>Highest Maximum Demand (13 May 2013)</b>	16,298 MW	16,562 MW	1.62%	<b>*New MD</b>
<b>Highest Daily Energy Demand (25 June 2013)</b>	345.88 GWh	345.25 GWh	-0.18%	<b>*New Energy</b>

Prepared by:

Electricity Market Operations

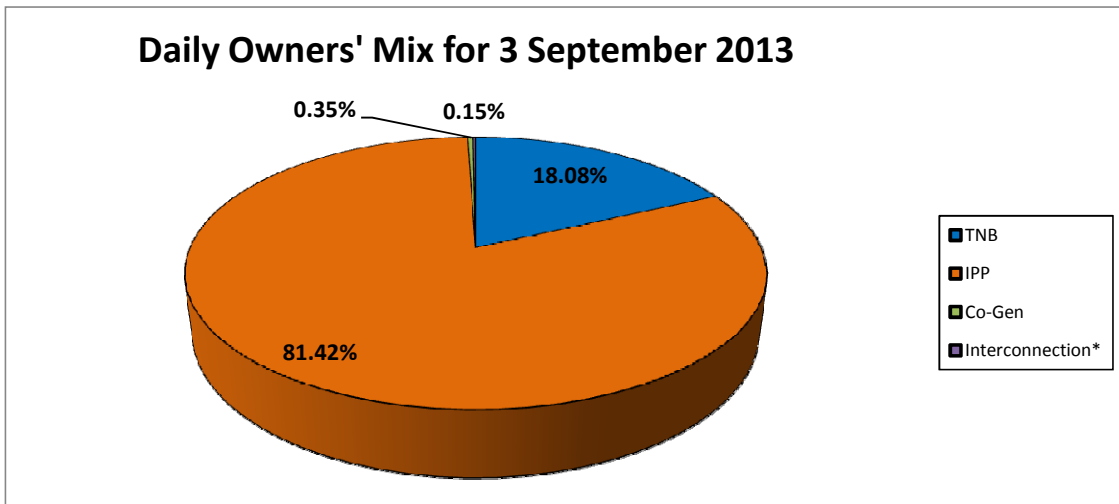
Electricity Supply & Market Regulations Dept.

Energy Commission Malaysia

04-Sep-13

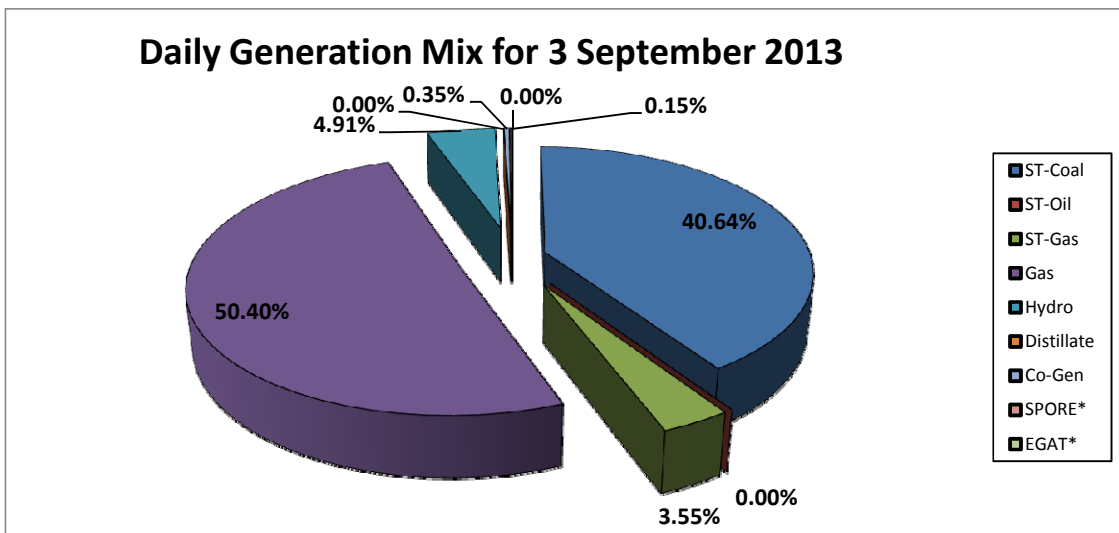
**Daily Owners' Mix for 3 September 2013**

TNB	57,161 MWh
IPP	257,417 MWh
Co-Gen	1,091 MWh
Interconnection*	472 MWh



**Daily Generation Mix for 3 September 2013**

ST-Coal	128,496 MWh
ST-Oil	- MWh
ST-Gas	11,217 MWh
Gas	159,354 MWh
Hydro	15,521 MWh
Distillate	- MWh
Co-Gen	1,091 MWh
SPORE*	486 MWh
EGAT*	(14) MWh



\*Negative = energy is imported from Singapore and Thailand  
 Positive = energy is exported to Singapore and Thailand