

**GRID SYSTEM OPERATION SUMMARY (PENINSULAR MALAYSIA)**

	<b>FORECAST</b>	<b>ACTUAL</b>	<b>VARIANCE</b>	
<b>Maximum Demand for 2 September 2013</b>	15,124 MW	15,098 MW	-0.17%	
<b>Energy Demand for 2 September 2013</b>	307.52 GWh	306.99 GWh	-0.17%	
<b>Highest Maximum Demand (13 May 2013)</b>	16,298 MW	16,562 MW	1.62%	<b>*New MD</b>
<b>Highest Daily Energy Demand (25 June 2013)</b>	345.88 GWh	345.25 GWh	-0.18%	<b>*New Energy</b>

Prepared by:

Electricity Market Operations

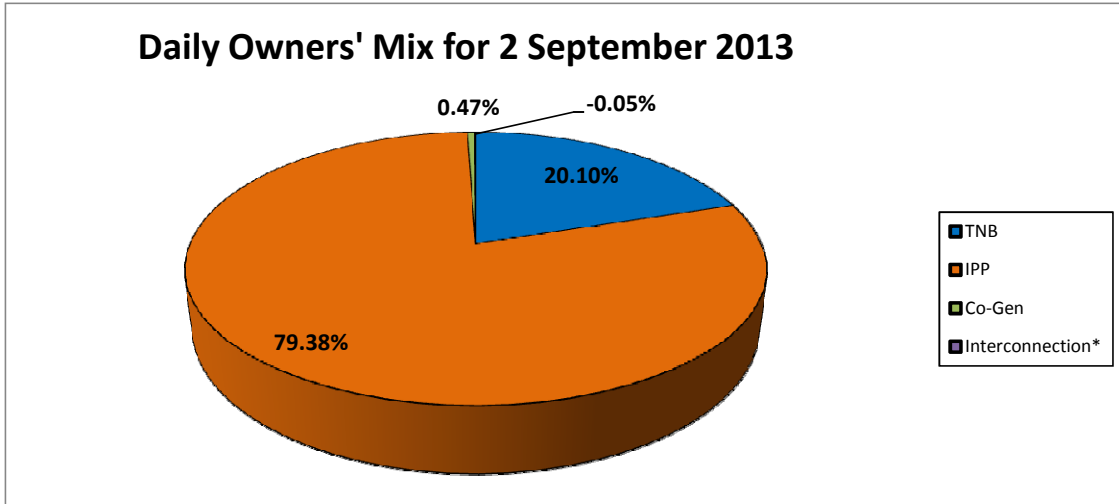
Electricity Supply & Market Regulations Dept.

Energy Commission Malaysia

03-Sep-13

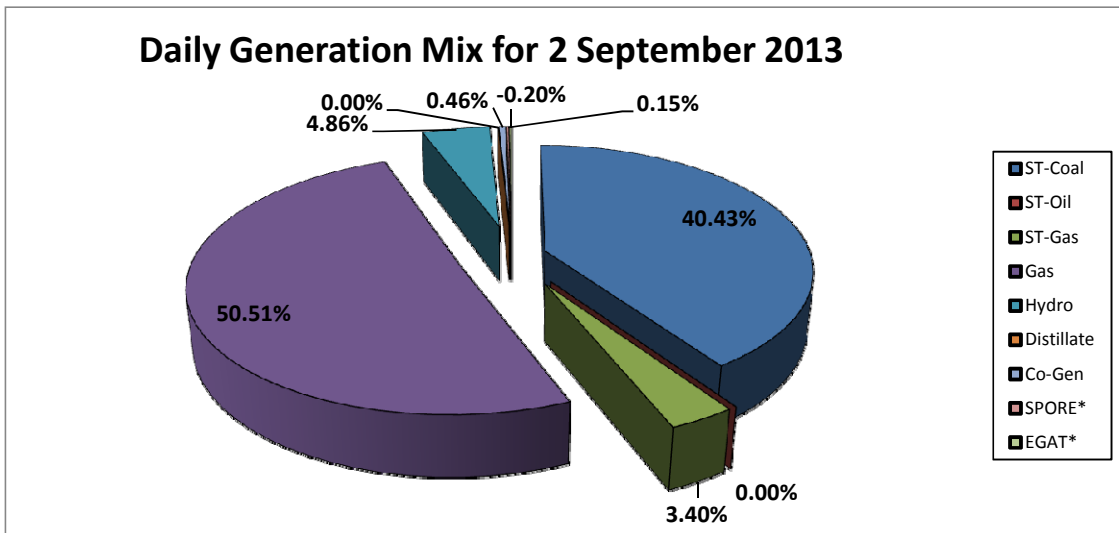
**Daily Owners' Mix for 2 September 2013**

TNB	61,427 MWh
IPP	242,638 MWh
Co-Gen	1,425 MWh
Interconnection*	(164) MWh



**Daily Generation Mix for 2 September 2013**

ST-Coal	123,928 MWh
ST-Oil	- MWh
ST-Gas	10,408 MWh
Gas	154,841 MWh
Hydro	14,888 MWh
Distillate	- MWh
Co-Gen	1,425 MWh
SPORE*	447 MWh
EGAT*	(611) MWh



\*Negative = energy is imported from Singapore and Thailand

Positive = energy is exported to Singapore and Thailand