

Duties and Responsibilities of Installation Owners and Registered Electrical Energy Manager – Qualification and Application Procedure

Hafiza Yob
Senior Executive
Demand Side Management Unit
Energy Management and Industrial Department
Energy Commission

How to get informed that your installation is affected by the regulation?

Regulation 6 of EMEER 2008

Notification by the Commission

6. (1) The Commission may, at any time by written notice, direct any private installation licensee or consumer whose total net electrical energy generation or total electrical energy consumption, as the case may be, equals to or exceeds 3,000,000kWh-

What you should do when received the notice?

- (a) to appoint or designate a registered electrical energy manager to carry out the functions and duties under regulation 16 at the installation;*
- (b) to submit a written confirmation of such appointment or designation under paragraph (a) to the Commission containing the name and particulars of the registered electrical energy manager as well as the date of expiry of his registration as an electrical energy manager;*

Information to be submitted must include the way forward of the installation towards efficient energy management in **3 months** from the date notice received

(c) to submit information regarding –

- (i) the statement of policy for efficient electrical energy management of the installation;*
- (ii) the objectives of efficient electrical energy management; and*
- (iii) the accounts and documents pertaining to efficient electrical energy management;*



Every 6 months, a review report on the measures taken must be submitted to Energy Commission

*(d) to submit the report in Form A of the Second Schedule that has been duly signed;
and*

(e) to submit any other information which the Commission may require.

How to become an Electrical Energy Manager registered with Energy Commission?

Regulation 12 of EMEER 2008

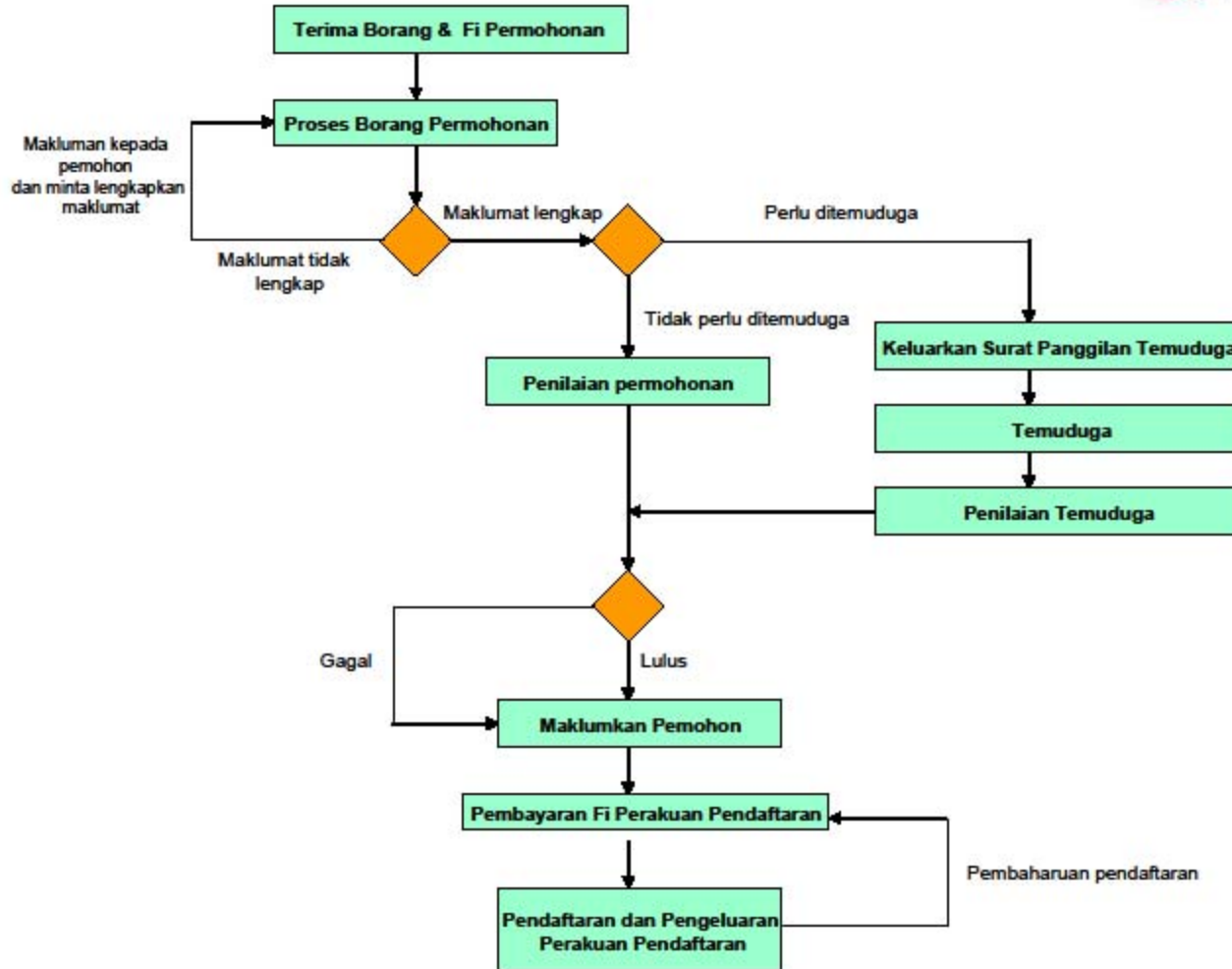
(a) he is a Malaysian citizen aged 23 years and above who –

- (i) holds a certificate of registration as a Professional Engineer under the Registration of Engineers Act 1967 [Act 138] and possesses at least six months working experience in the efficient management of electrical energy at an installation;*
- (ii) holds a degree in Science, Engineering, Architecture or its equivalent and possesses at least one year working experience in the efficient management of electrical energy at an installation; or*
- (iii) holds a Certificate of Competency issued by the Commission as an Electrical Services Engineer or a Competent Electrical Engineer and possesses at least nine months working experience in the efficient management of electrical energy at an installation*

What is the procedure to apply for it?

- Fill in the form
- Submit to Energy Commission with RM 20 (Money Order or Cheque)
- Registration fee RM 100

PROSES PERMOHONAN DAN PENDAFTARAN PENGURUS TENAGA ELEKTRIK



As an Energy Manager, what duties should I perform?

Regulation 16 of EMEER 2008

- (a) he shall be responsible –*
 - (i) to audit and analyse the total electrical energy consumption or total net electrical energy generation at the installation, including the significant end use of electricity;*
 - (ii) to advise the private installation licensee or consumer in developing and implementing measures to ensure efficient management of electrical energy at the installation; and*
 - (iii) to monitor effective implementation of the measures referred to in subparagraph (ii);*



(b) he shall supervise the keeping of records on efficient management of electrical energy at the installation and verify its accuracy; and

(c) he shall ensure that the private installation licensee or consumer submits the information and report under paragraphs 6(1)(c), (d) and (e) within the periods as specified in regulation 7.



Thank you