

GRID SYSTEM OPERATION SUMMARY (PENINSULAR MALAYSIA)

	FORECAST	ACTUAL	VARIANCE	
Maximum Demand for 26 August 2013	15,601 MW	15,616 MW	0.10%	
Energy Demand for 26 August 2013	320.69 GWh	321.54 GWh	0.27%	
Highest Maximum Demand (13 May 2013)	16,298 MW	16,562 MW	1.62%	*New MD
Highest Daily Energy Demand (25 June 2013)	345.88 GWh	345.25 GWh	-0.18%	*New Energy

Prepared by:

Electricity Market Operations

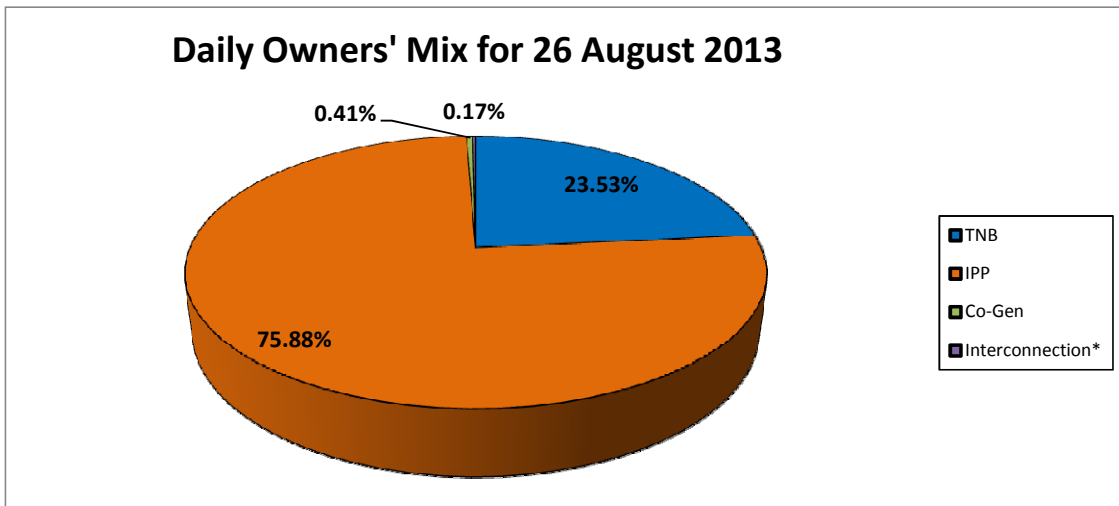
Electricity Supply & Market Regulations Dept.

Energy Commission Malaysia

27-Aug-13

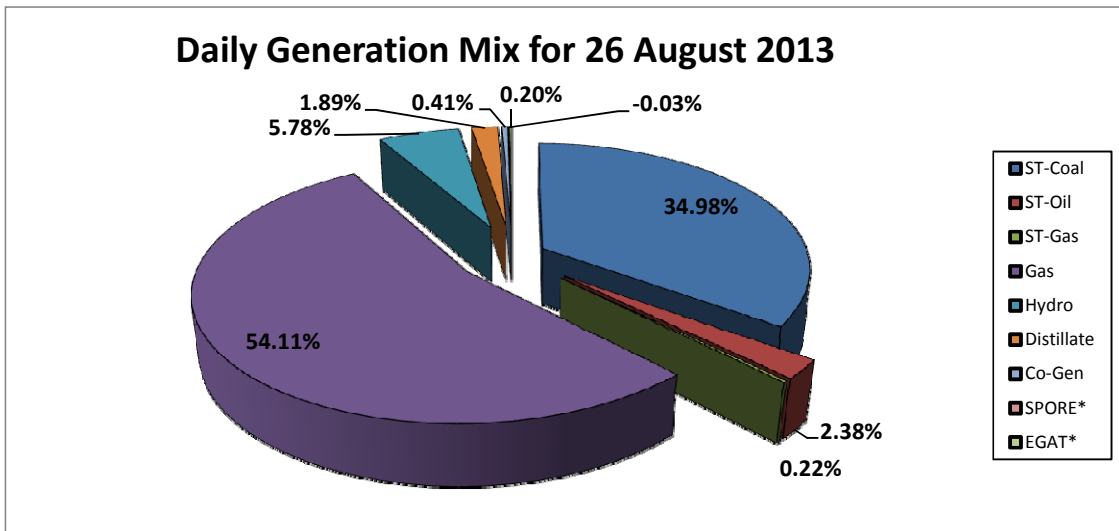
Daily Owners' Mix for 26 August 2013

TNB	75,923 MWh
IPP	244,843 MWh
Co-Gen	1,333 MWh
Interconnection*	555 MWh



Daily Generation Mix for 26 August 2013

ST-Coal	112,929 MWh
ST-Oil	7,697 MWh
ST-Gas	713 MWh
Gas	174,673 MWh
Hydro	18,658 MWh
Distillate	6,096 MWh
Co-Gen	1,333 MWh
SPORE*	(81) MWh
EGAT*	636 MWh



*Negative = energy is imported from Singapore and Thailand
 Positive = energy is exported to Singapore and Thailand