

GRID SYSTEM OPERATION SUMMARY (PENINSULAR MALAYSIA)

	FORECAST	ACTUAL	VARIANCE
Maximum Demand for 20 August 2013	15,238 MW	15,089 MW	-0.98%
Energy Demand for 20 August 2013	316.34 GWh	315.59 GWh	-0.24%
Highest Maximum Demand (13 May 2013)	16,298 MW	16,562 MW	1.62% *New MD
Highest Daily Energy Demand (25 June 2013)	345.88 GWh	345.25 GWh	-0.18% *New Energy

Prepared by:

Electricity Market Operations

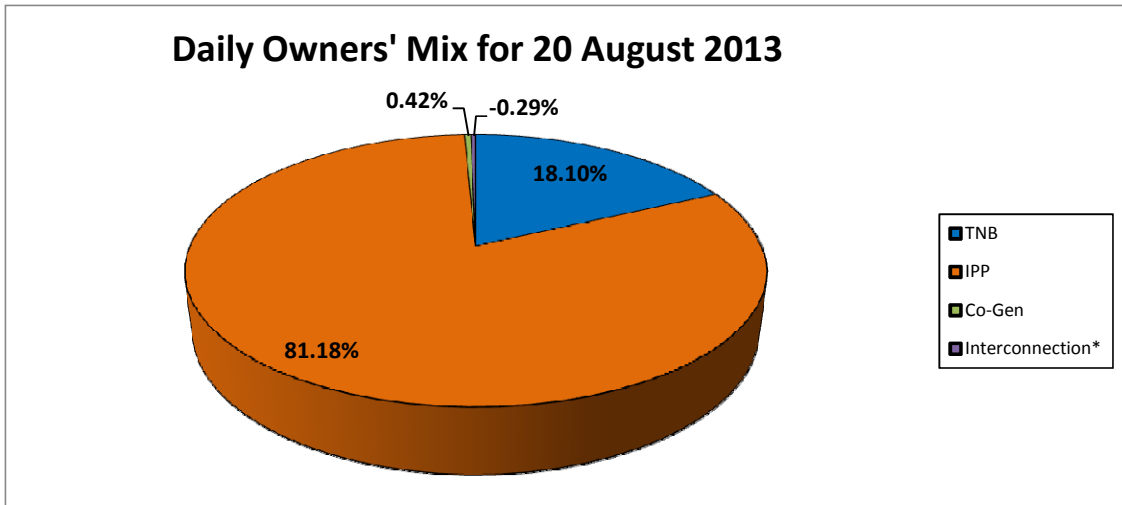
Electricity Supply & Market Regulations Dept.

Energy Commission Malaysia

21-Aug-13

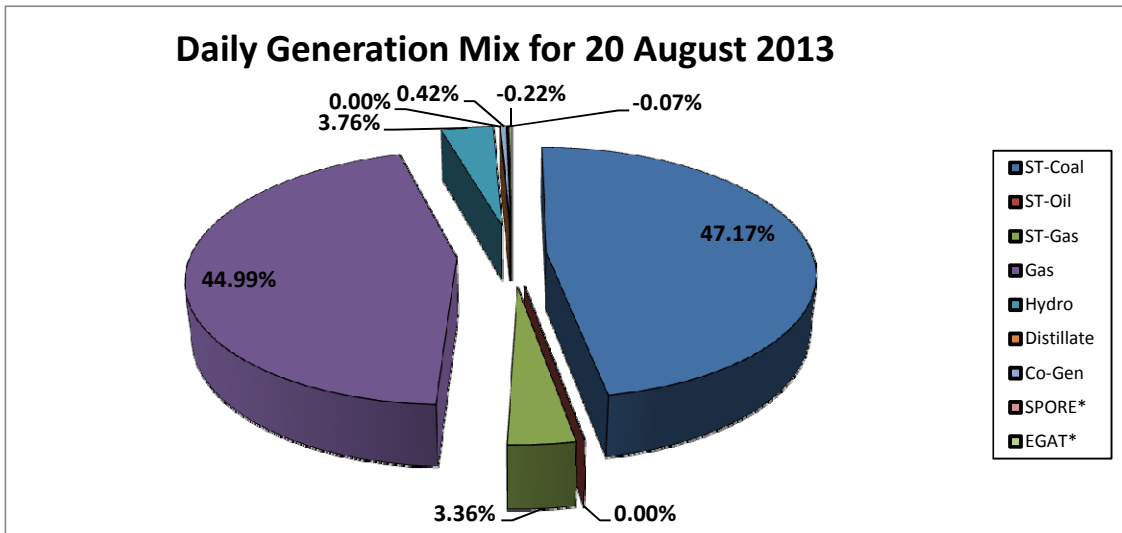
Daily Owners' Mix for 20 August 2013

TNB	57,132 MWh
IPP	256,206 MWh
Co-Gen	1,338 MWh
Interconnection*	(912) MWh



Daily Generation Mix for 20 August 2013

ST-Coal	148,865 MWh
ST-Oil	- MWh
ST-Gas	10,604 MWh
Gas	141,991 MWh
Hydro	11,878 MWh
Distillate	- MWh
Co-Gen	1,338 MWh
SPORE*	(209) MWh
EGAT*	(703) MWh



*Negative = energy is imported from Singapore and Thailand
 Positive = energy is exported to Singapore and Thailand