

**GRID SYSTEM OPERATION SUMMARY (PENINSULAR MALAYSIA)**

	<b>FORECAST</b>	<b>ACTUAL</b>	<b>VARIANCE</b>	
<b>Maximum Demand for 19 August 2013</b>	15,155 MW	14,954 MW	-1.33%	
<b>Energy Demand for 19 August 2013</b>	320.29 GWh	311.26 GWh	-2.82%	
<b>Highest Maximum Demand (13 May 2013)</b>	16,298 MW	16,562 MW	1.62%	<b>*New MD</b>
<b>Highest Daily Energy Demand (25 June 2013)</b>	345.88 GWh	345.25 GWh	-0.18%	<b>*New Energy</b>

Prepared by:

Electricity Market Operations

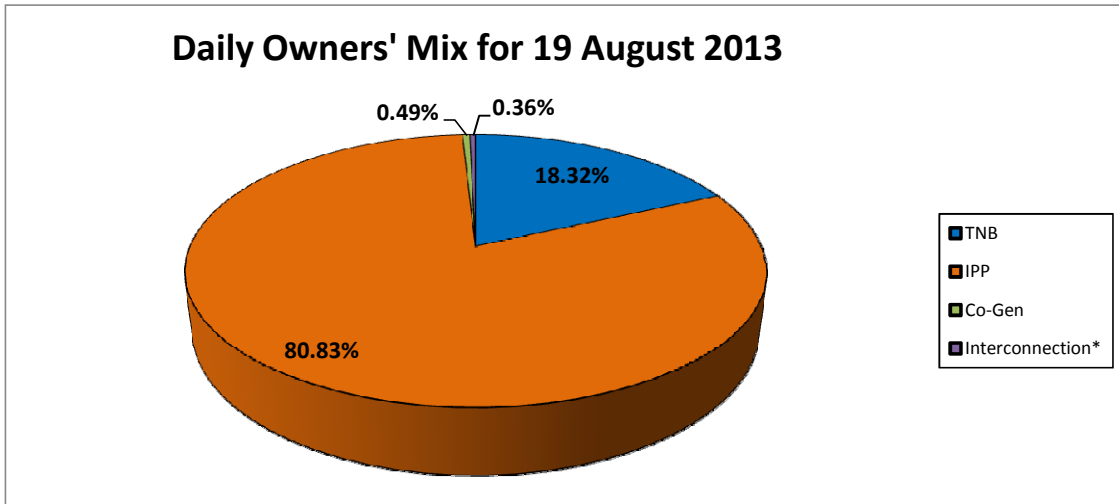
Electricity Supply & Market Regulations Dept.

Energy Commission Malaysia

20-Aug-13

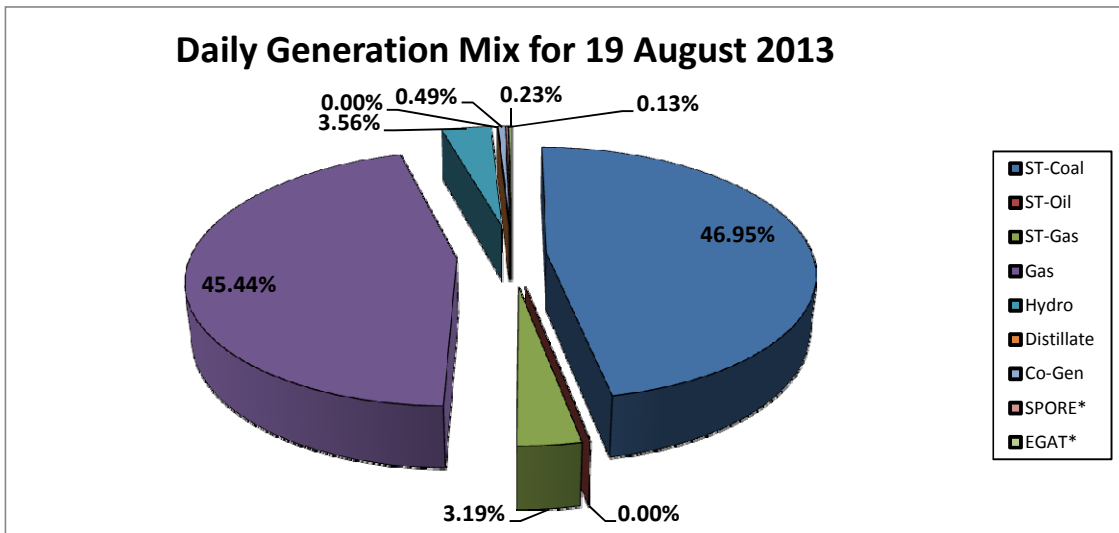
**Daily Owners' Mix for 19 August 2013**

TNB	57,423 MWh
IPP	253,420 MWh
Co-Gen	1,550 MWh
Interconnection*	1,135 MWh



**Daily Generation Mix for 19 August 2013**

ST-Coal	147,211 MWh
ST-Oil	- MWh
ST-Gas	10,000 MWh
Gas	142,458 MWh
Hydro	11,174 MWh
Distillate	- MWh
Co-Gen	1,550 MWh
SPORE*	410 MWh
EGAT*	725 MWh



\*Negative = energy is imported from Singapore and Thailand  
 Positive = energy is exported to Singapore and Thailand